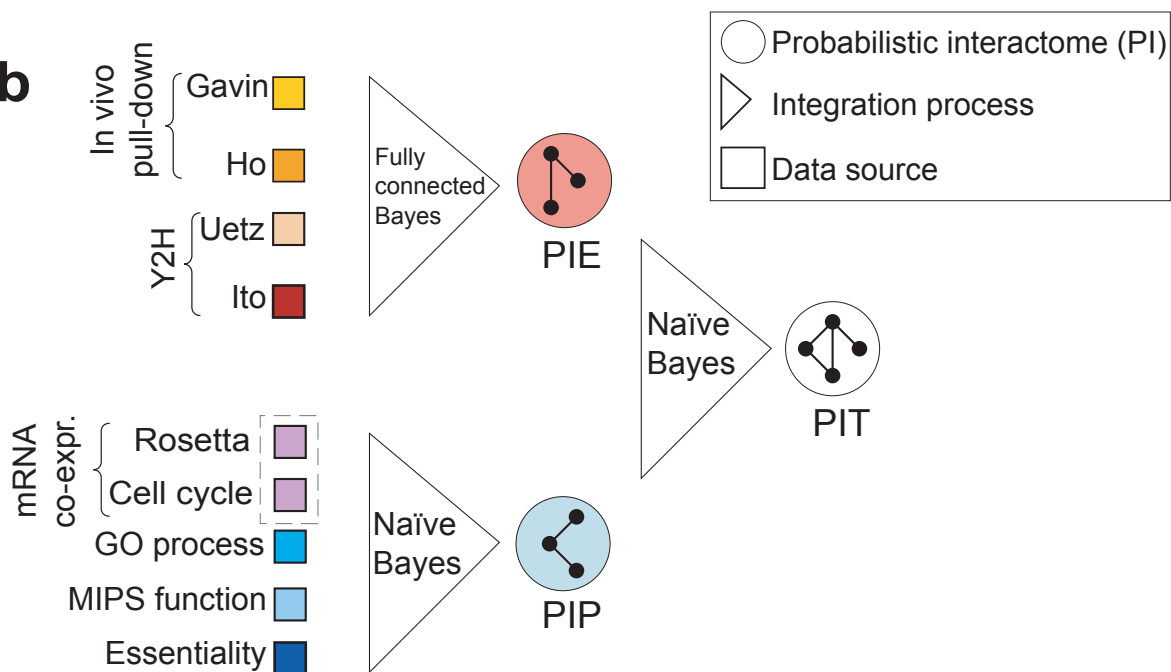


# Figure 1

**a**

| Data type                     | Dataset             |                                    | # protein pairs | Used for ...                                       |
|-------------------------------|---------------------|------------------------------------|-----------------|--|
| Experimental interaction data | In-vivo pull-down   | Gavin et al.                       | 31,304          | Integration of experimental interaction data (PIE) |
|                               |                     | Ho et al.                          | 25,333          |  |
|                               | Yeast two-hybrid    | Uetz et al.                        | 981             |  |
|                               |                     | Ito et al.                         | 4,393           |  |
| Other genomic features        | Expression          | Rosetta compendium                 | 19,334,806      | De novo prediction (PIP)                           |
|                               |                     | Cell cycle                         | 17,467,005      |  |
|                               | Biological function | GO biological process              | 3,146,286       |  |
|                               |                     | MIPS function                      | 6,161,805       |  |
|                               | Essentiality        |                                    | 8,130,528       |  |
| Gold standards                | Positives           | Proteins in the same MIPS complex  | 8,250           | Training & testing                                 |
|                               | Negatives           | Proteins separated by localization | 2,708,746       |  |

**b**



**c**

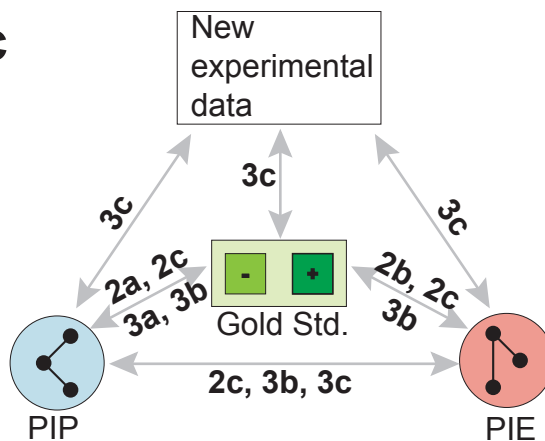
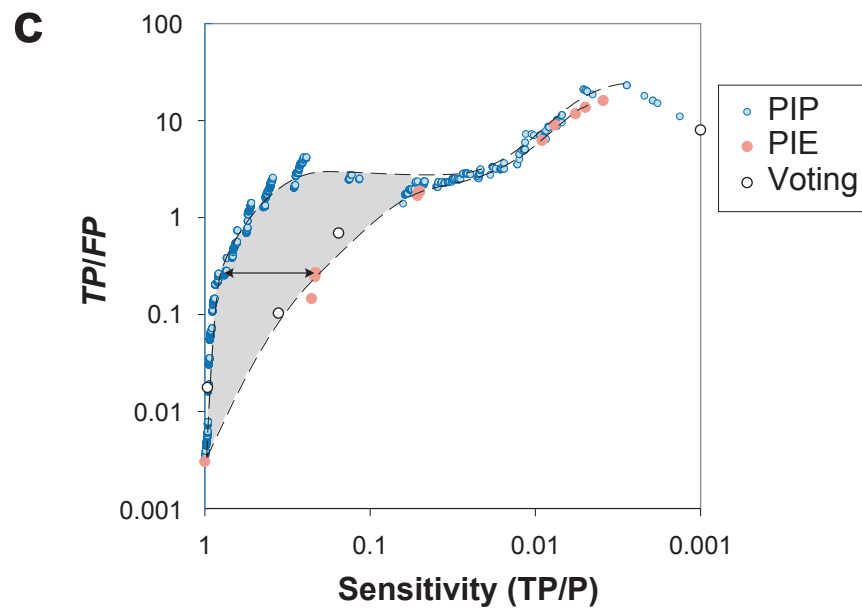
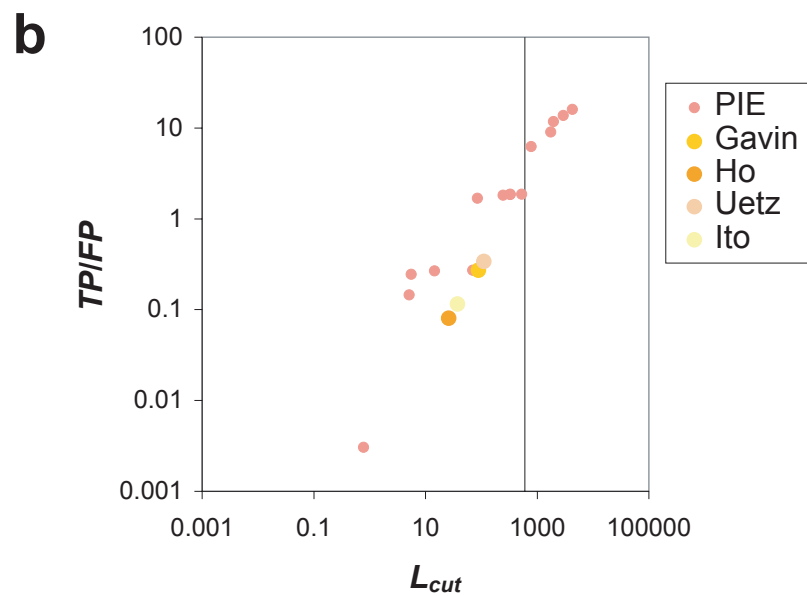
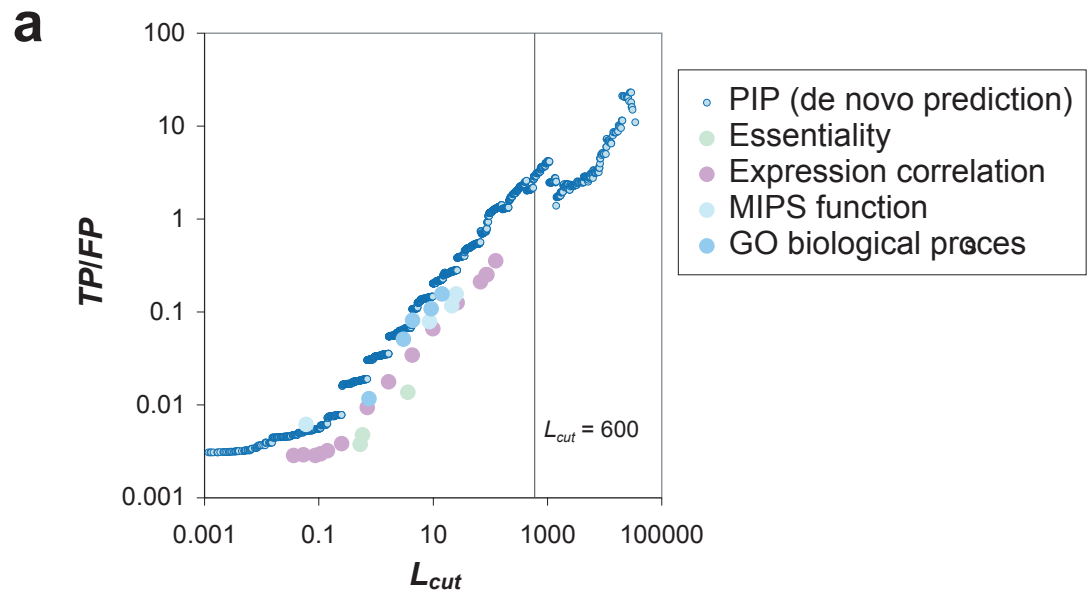


Figure 2



**Figure 3a**

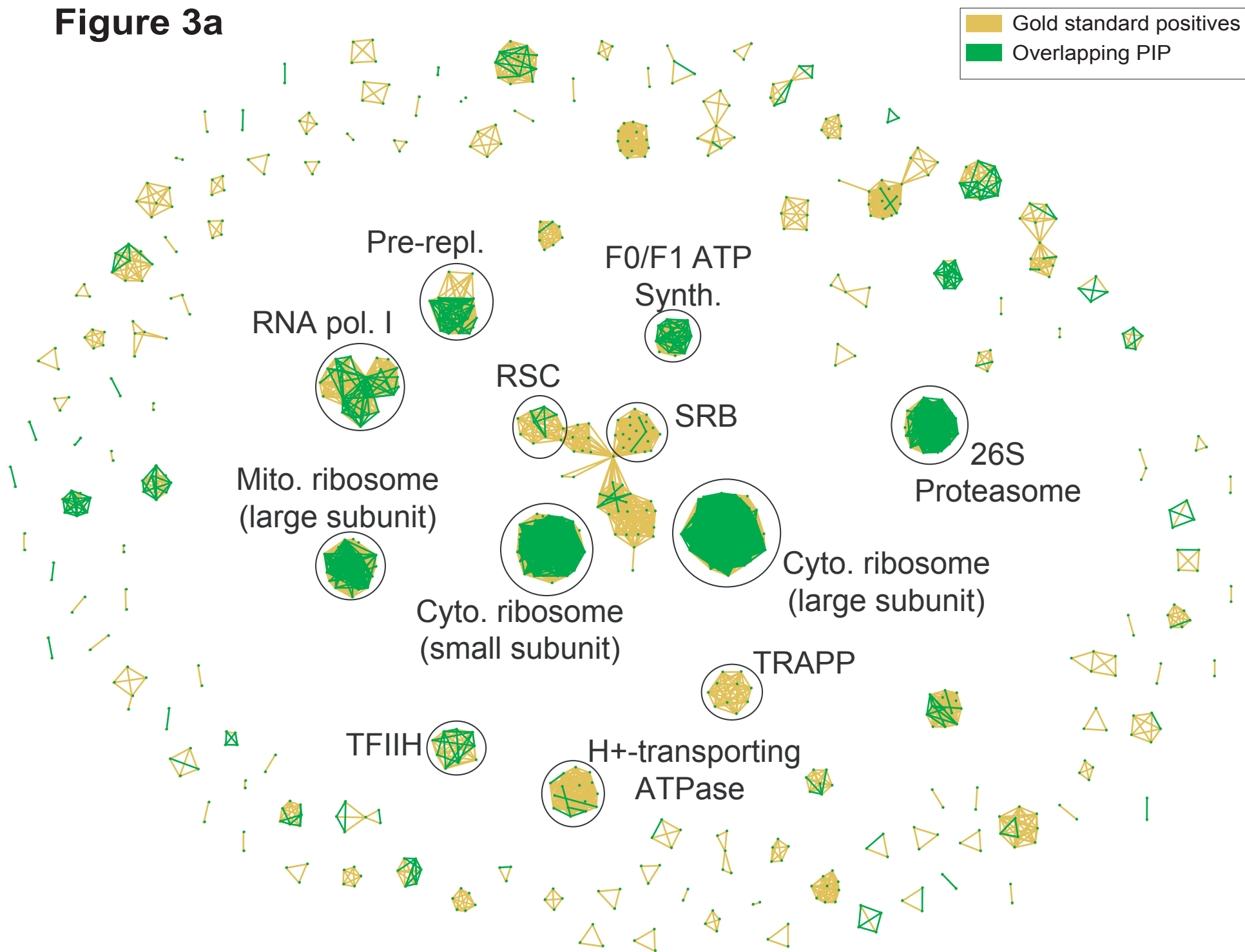
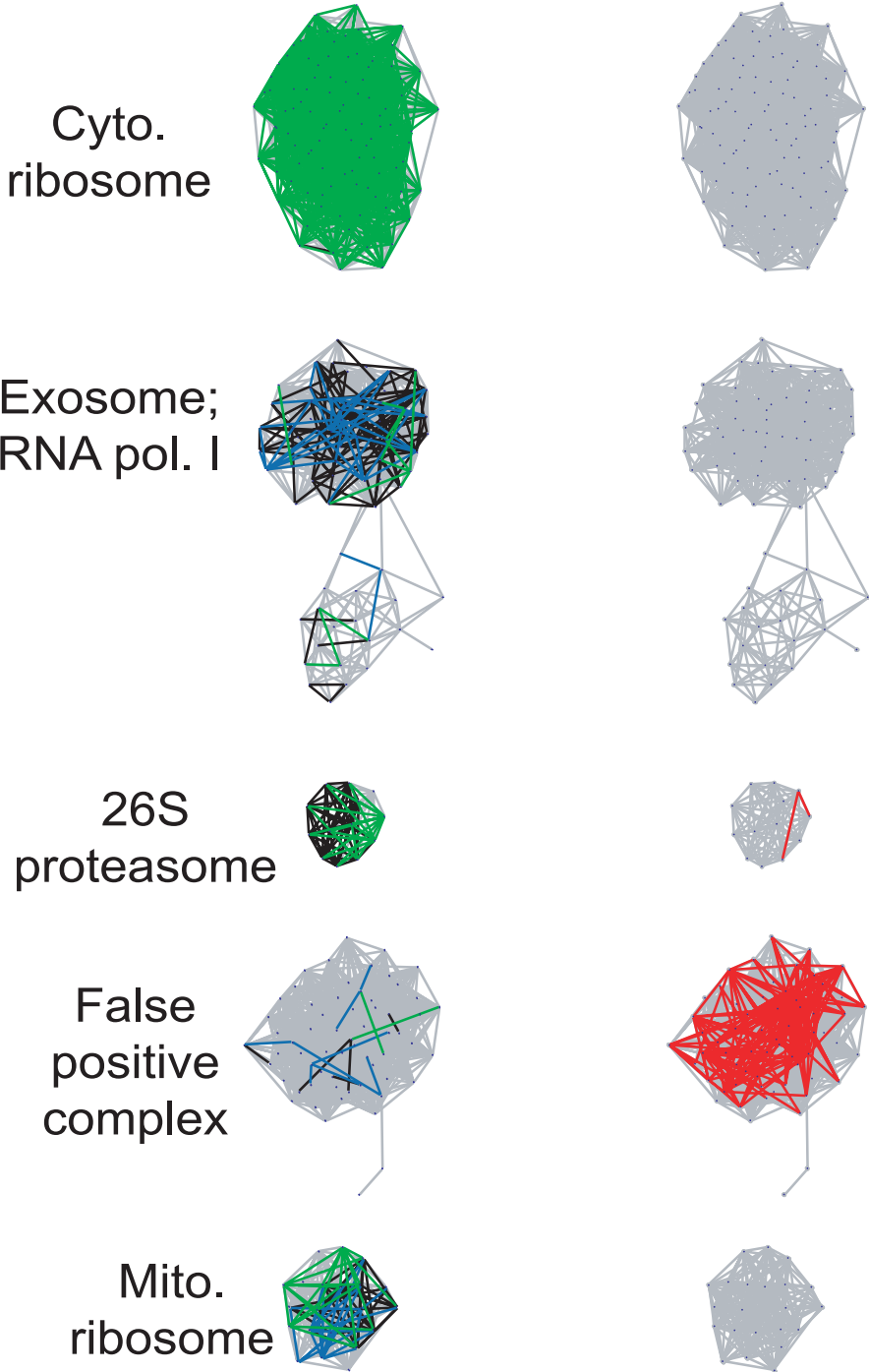
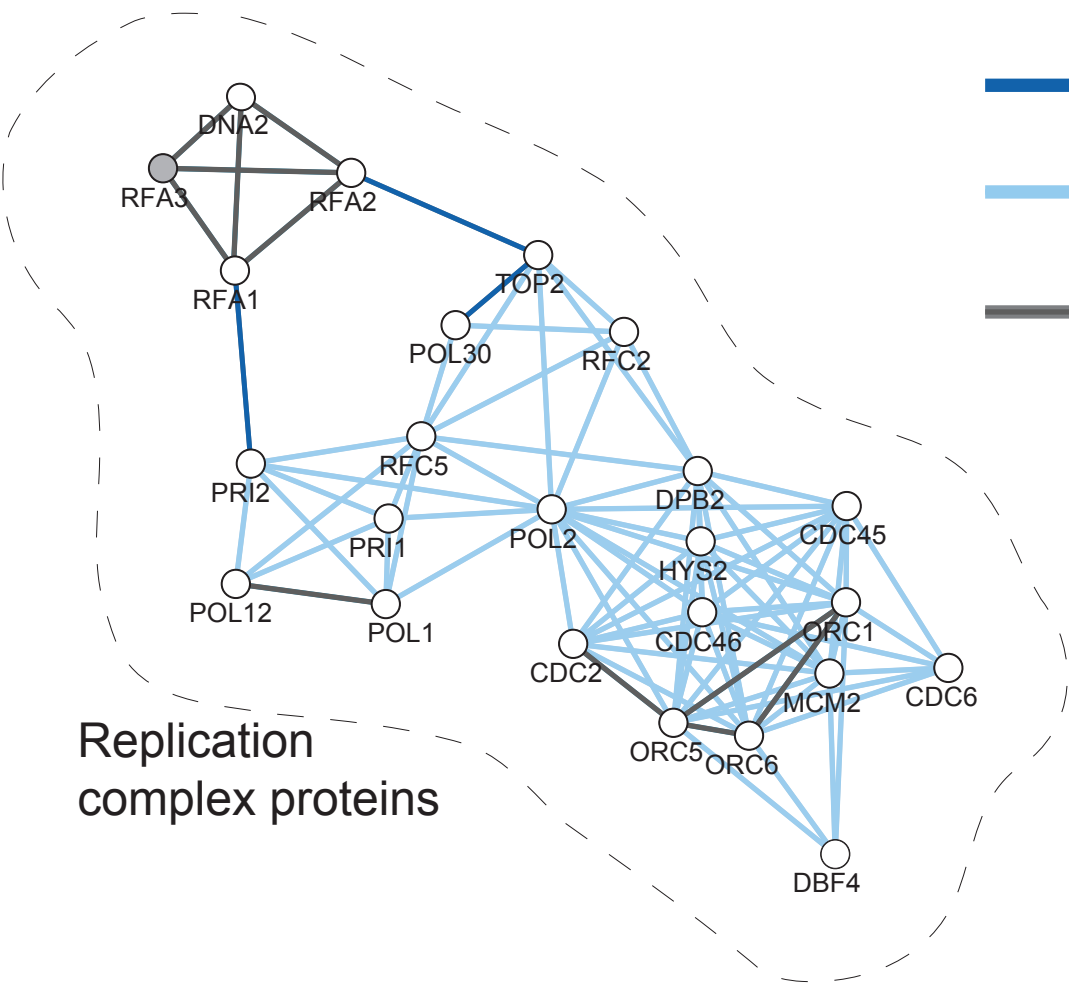
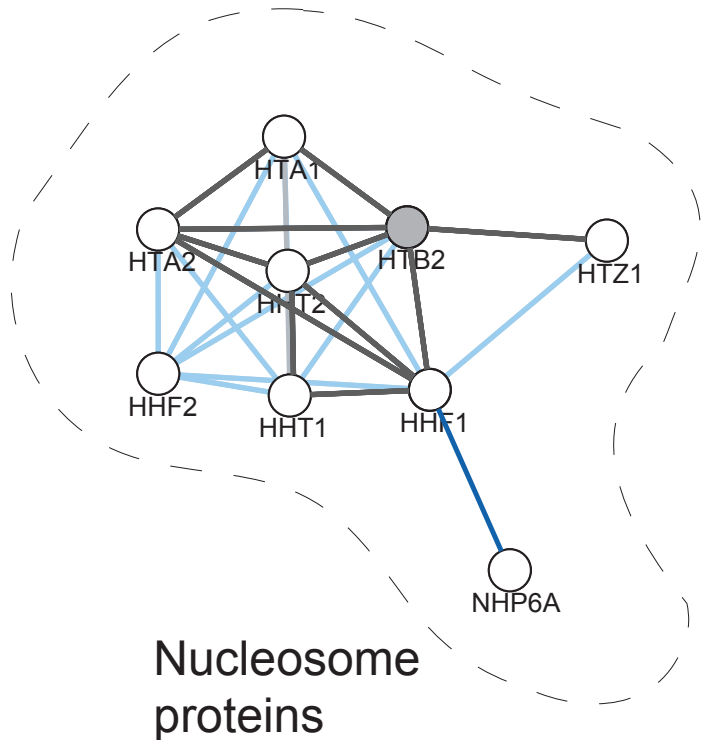
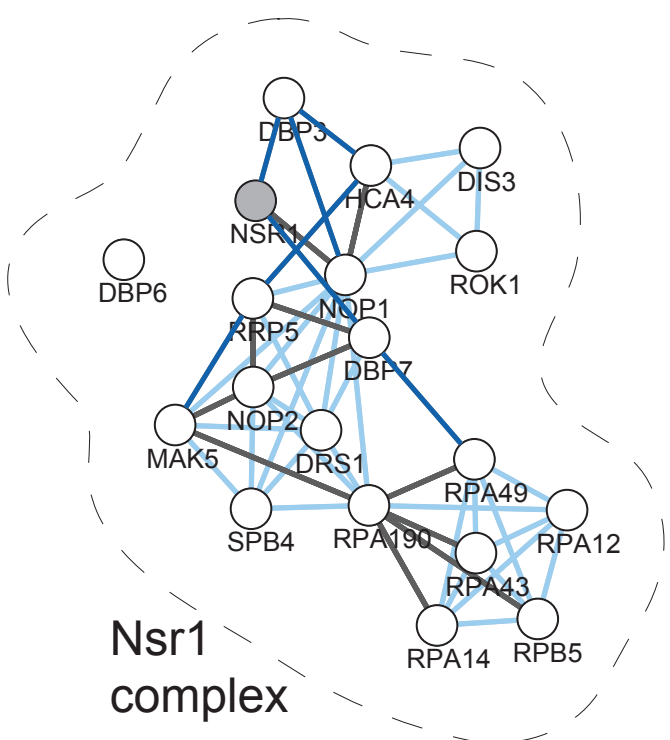





Figure 3b



**Figure 3c**



-  New TAP-tag data (A)
-  Previously known interactions (B)
-  Overlap between (A) and (B)

**Figure 4**

