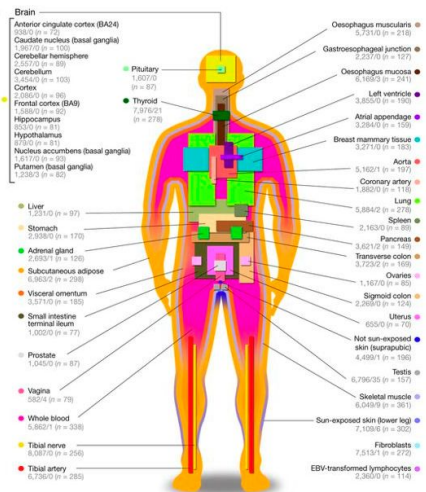


# EN-TE<sub>x</sub> tissues color palette

Gerstein lab - 09/2018

# GTEX

- GTEX has defined a color for each tissue that we have collected on EN-TEX
- Tissues are somewhat consistently colored based on a combination of Organ/System

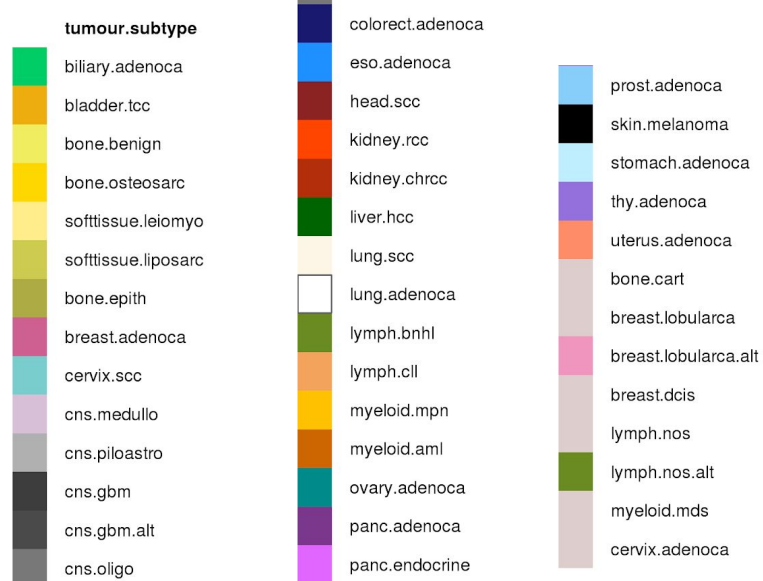


Tissue	Samples	Organ	System
Adipose - Subcutaneous	350	Adipose Tissue	Other
Adipose - Visceral (Omentum)	227	Adipose Tissue	Other
Adrenal Gland	145	Adrenal Gland	Endocrine
Artery - Aorta	224	Blood Vessel	Cardiovascular
Artery - Coronary	133	Blood Vessel	Cardiovascular
Artery - Tibial	332	Blood Vessel	Cardiovascular
Bladder	11	Bladder	Other
Brain - Amygdala	72	Brain	Brain
Brain - Anterior cingulate cortex (BA24)	84	Brain	Brain
Brain - Caudate (basal ganglia)	117	Brain	Brain
Brain - Cerebellar Hemisphere	105	Brain	Brain
Brain - Cerebellum	125	Brain	Brain
Brain - Cortex	114	Brain	Brain
Brain - Frontal Cortex (BA9)	108	Brain	Brain
Brain - Hippocampus	94	Brain	Brain
Brain - Hypothalamus	96	Brain	Brain
Brain - Nucleus accumbens (basal ganglia)	113	Brain	Brain
Brain - Putamen (basal ganglia)	97	Brain	Brain
Brain - Spinal cord (cervical c-1)	71	Brain	Brain
Brain - Substantia nigra	63	Brain	Brain
Breast - Mammary Tissue	214	Breast	Reproductive
Cells - EBV-transformed lymphocytes	118	Blood	Other
Cells - Transformed fibroblasts	284	Skin	Other
Cervix - Ectocervix	6	Cervix Uteri	Reproductive
Cervix - Endocervix	5	Cervix Uteri	Reproductive
Colon - Sigmoid	149	Colon	Digestive
Colon - Transverse	196	Colon	Digestive
Esophagus - Gastroesophageal Junction	153	Esophagus	Digestive
Esophagus - Mucosa	286	Esophagus	Digestive
Esophagus - Muscularis	247	Esophagus	Digestive
Fallopian Tube	6	Fallopian Tube	Reproductive
Heart - Atrial Appendage	194	Heart	Cardiovascular
Heart - Left Ventricle	218	Heart	Cardiovascular
Kidney - Cortex	32	Kidney	Other
Liver	119	Liver	Digestive
Lung	320	Lung	Other
Minor Salivary Gland	57	Salivary Gland	Other
Muscle - Skeletal	430	Muscle	Other
Nerve - Tibial	304	Nerve	Other
Ovary	97	Ovary	Reproductive
Pancreas	171	Pancreas	Digestive
Pituitary	103	Pituitary	Endocrine
Prostate	106	Prostate	Reproductive
Skin - Not Sun Exposed (Suprapubic)	250	Skin	Other
Skin - Sun Exposed (Lower leg)	357	Skin	Other
Small Intestine - Terminal Ileum	88	Small Intestine	Digestive
Spleen	104	Spleen	Other
Stomach	193	Stomach	Digestive
Testis	172	Testis	Reproductive
Thyroid	323	Thyroid	Endocrine
Uterus	83	Uterus	Reproductive
Vagina	96	Vagina	Reproductive
Whole Blood	393	Blood	Other

# Other color schemes

- TCGA/PCAWG

<https://github.com/ICGC-TCGA-PanCancer/pcawg-colour-palette>



- Based on developmental tissue of origin: Endo, Meso, Ecto derm

- Based on organ/tissue + RNA-seq distance

- Use specific colors for female/male specific tissues
- Pick another color palette

# Matching EN-TE<sub>x</sub> to GTEx tissue colors

- <https://docs.google.com/spreadsheets/d/1EYe1hLEsAwfojhDSE30h8yrChbub8QxUI479fqSq4e4/edit#gid=0>