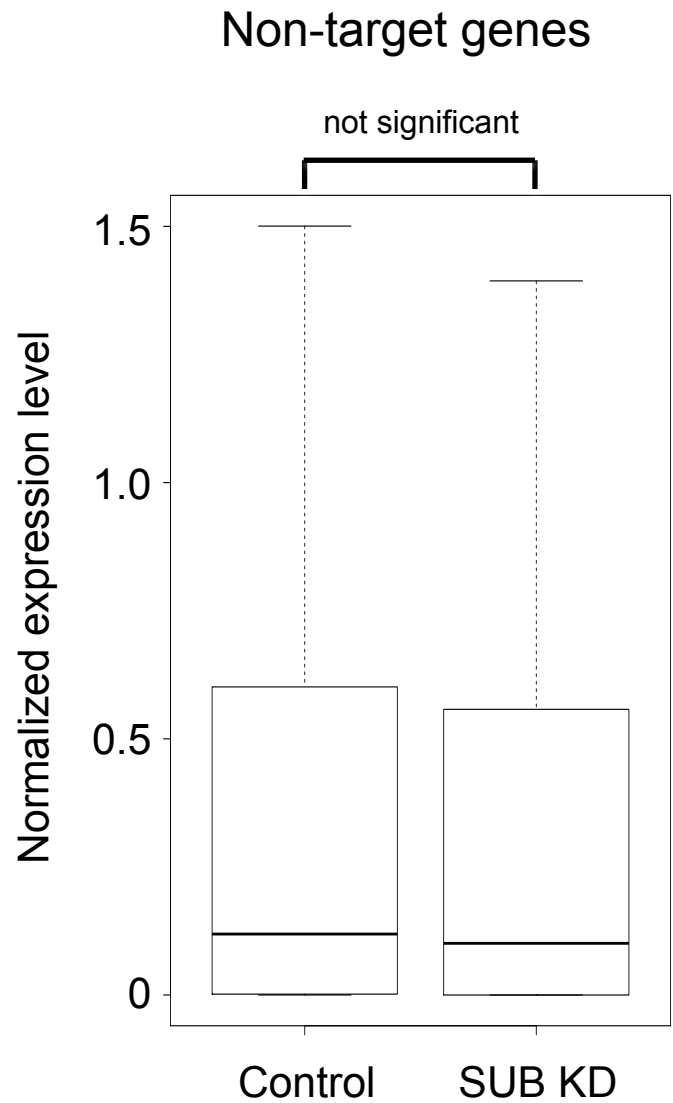
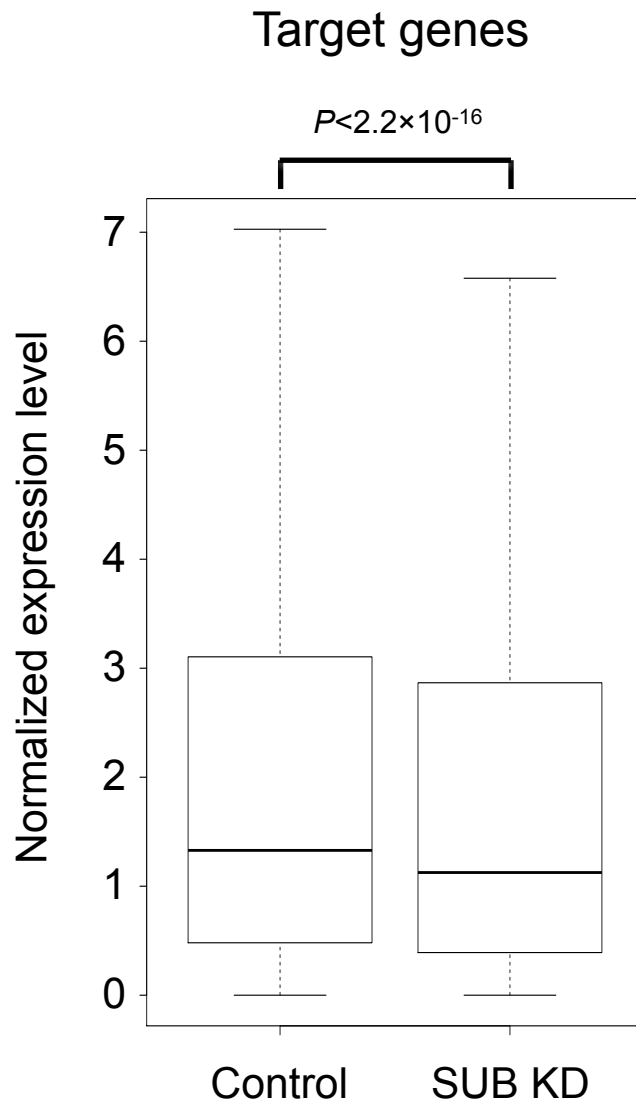


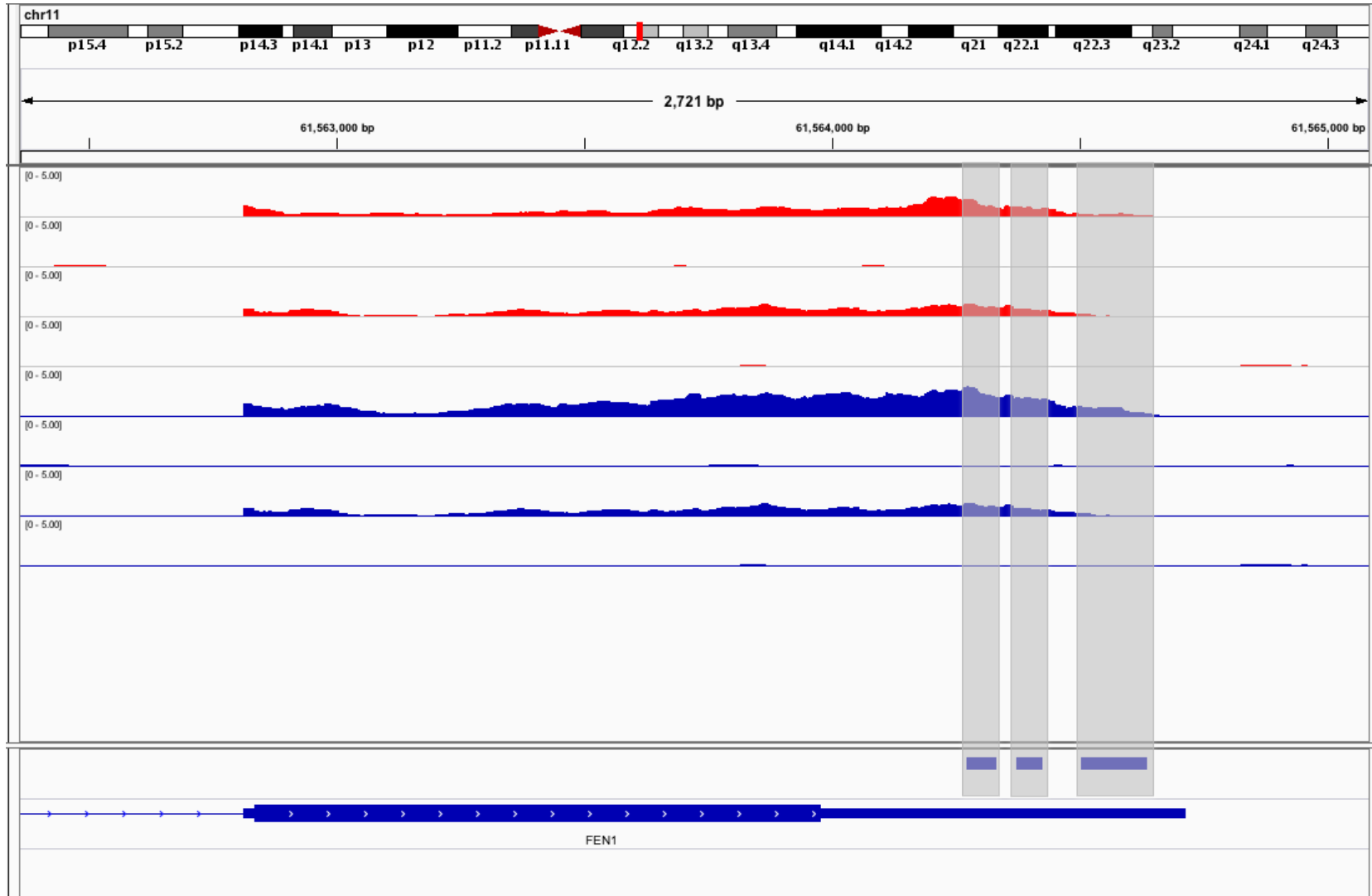
# Expression of 3' UTRs from SUB1 target genes



# List of cancer genes targeted by SUB1

[1]	"ACSL3"	"AKAP9"	"AKT1"	"AKT2"	"ALDH2"	"ANK1"	"APOBEC3B"	"ARNT"
[9]	"ATIC"	"ATP1A1"	"AXIN1"	"B2M"	"BCOR"	"BCORL1"	"BIRC6"	"BRCA1"
[17]	"BRD3"	"BTG1"	"BUB1B"	"CALR"	"CARS"	"CASP3"	"CBL"	"CCNC"
[25]	"CCND2"	"CCND3"	"CDK4"	"CDK6"	"CHD4"	"CHEK2"	"CIC"	"CLTC"
[33]	"CNBP"	"CNTRL"	"COX6C"	"CTNNB1"	"CTNND1"	"CUL3"	"DCTN1"	"DDX3X"
[41]	"DDX5"	"DEK"	"DNM2"	"DNMT3A"	"DROSHA"	"EED"	"EIF4A2"	"ELF4"
[49]	"EML4"	"EPS15"	"ETNK1"	"ETV4"	"EWSR1"	"EXT2"	"EZH2"	"EZR"
[57]	"FANCD2"	"FANCE"	"FANCG"	"FBXO11"	"FEN1"	"FGFR3"	"FIP1L1"	"FLNA"
[65]	"FUBP1"	"FUS"	"GNA11"	"H3F3B"	"HIST1H3B"	"HMGA1"	"HNRNPA2B1"	"HOOK3"
[73]	"HSP90AA1"	"HSP90AB1"	"IDH1"	"IDH2"	"JAK1"	"KDM5C"	"KEAP1"	"KIF5B"
[81]	"KMT2C"	"KMT2D"	"KTN1"	"LARP4B"	"LASP1"	"LCP1"	"LMNA"	"LMO2"
[89]	"LSM14A"	"LZTR1"	"MAP2K1"	"MAP2K2"	"MAPK1"	"MED12"	"MLF1"	"MLH1"
[97]	"MLLT11"	"MLLT4"	"MLLT6"	"MSH2"	"MSH6"	"MSN"	"MTOR"	"MYB"
[105]	"MYH9"	"NACA"	"NCOA4"	"NCOR2"	"NDRG1"	"NF1"	"NF2"	"NONO"
[113]	"NPM1"	"PCBP1"	"PHF6"	"PICALM"	"PIM1"	"POLE"	"POLG"	"POT1"
[121]	"PPP2R1A"	"PPP6C"	"PRKAR1A"	"PRKCB"	"PSIP1"	"PTPN11"	"PTPRC"	"RAC1"
[129]	"RAD21"	"RANBP2"	"RAP1GDS1"	"RB1"	"RBM10"	"RFWD3"	"RHOA"	"RMI2"
[137]	"RPL10"	"RPL22"	"RPN1"	"SBDS"	"SDHA"	"SDHB"	"SDHC"	"SDHD"
[145]	"SEPT5"	"SEPT6"	"SEPT9"	"SET"	"SF3B1"	"SFPQ"	"SH3GL1"	"SKI"
[153]	"SMARCA4"	"SMARCB1"	"SMARCD1"	"SMARCE1"	"SMC1A"	"SND1"	"SPEN"	"SRSF2"
[161]	"SRSF3"	"SSX1"	"STAG2"	"STAT3"	"STAT5B"	"STAT6"	"TAF15"	"TCF3"
[169]	"TFG"	"TFRC"	"TOP1"	"TPM3"	"TPM4"	"TPR"	"TRAF7"	"TRIM24"
[177]	"TRRAP"	"U2AF1"	"UBR5"	"WRN"	"XP01"	"YWHAE"	"ZMYM3"	

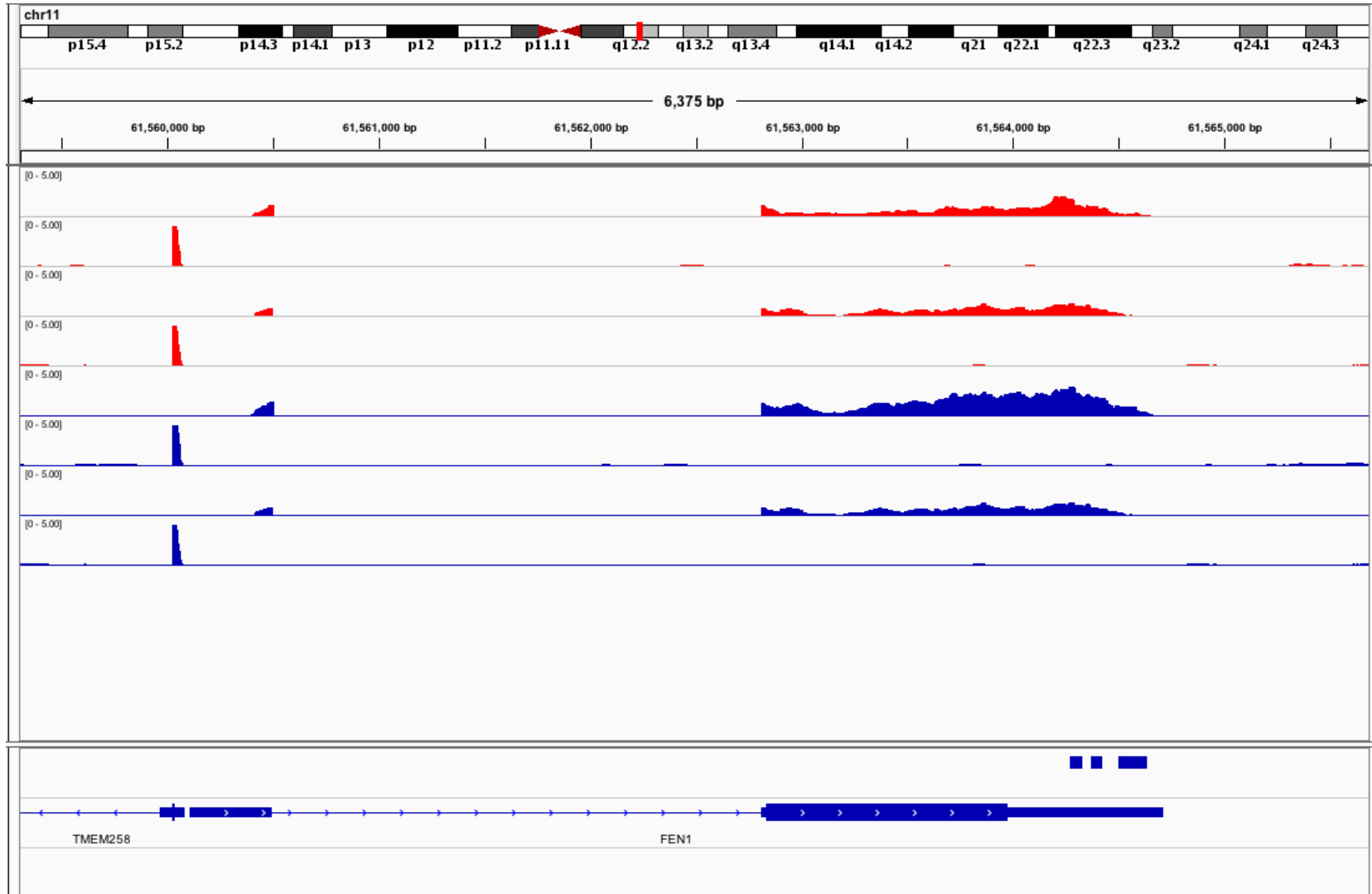
# FEN1 - 3' UTR



KD rep1 plus  
KD rep1 minus  
KD rep2 plus  
KD rep2 minus  
Ctl rep1 plus  
Ctl rep1 minus  
Ctl rep2 plus  
Ctl rep2 minus

Sub1 binding  
RefSeq gene

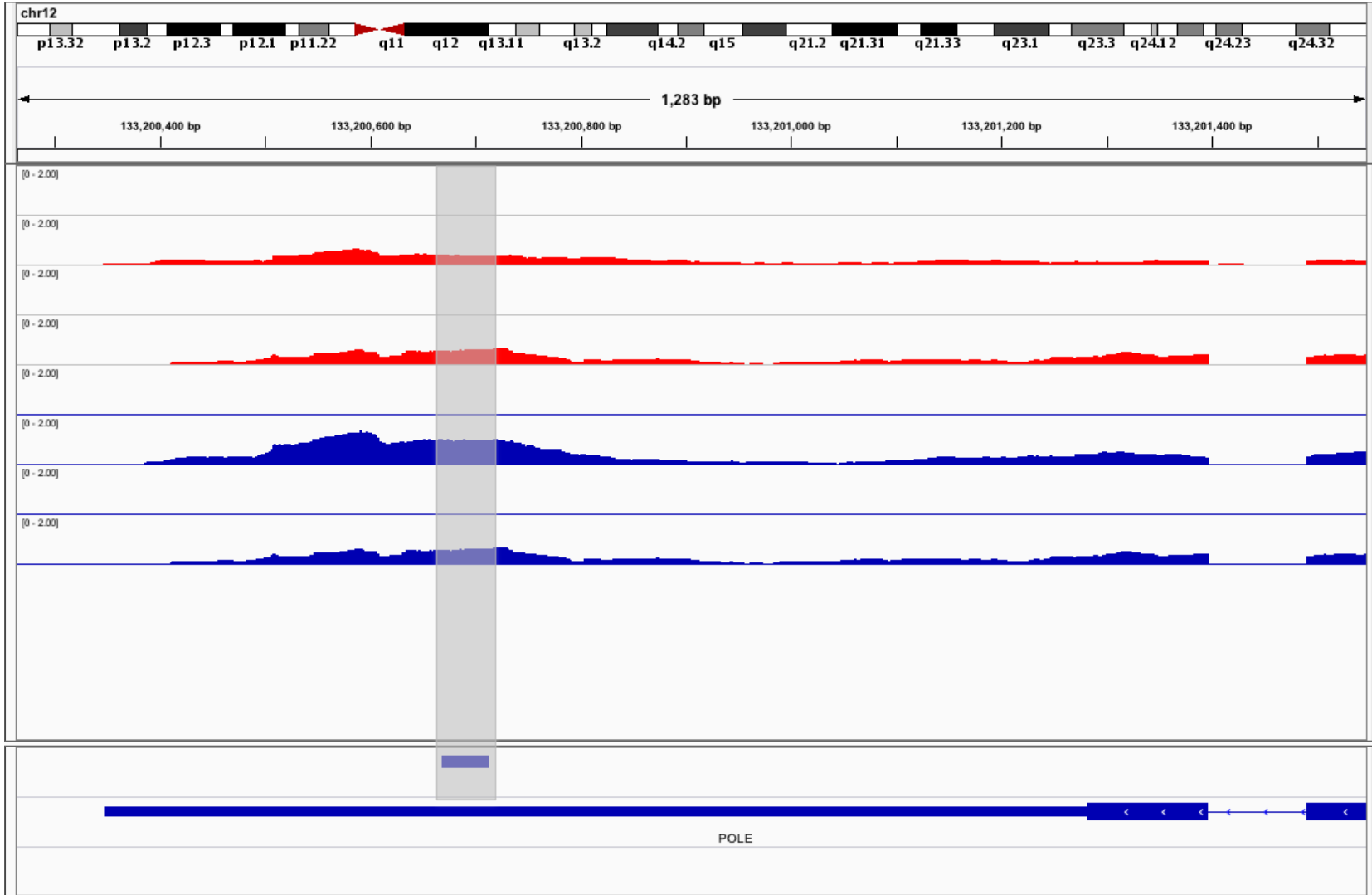
# FEN1 - Gene



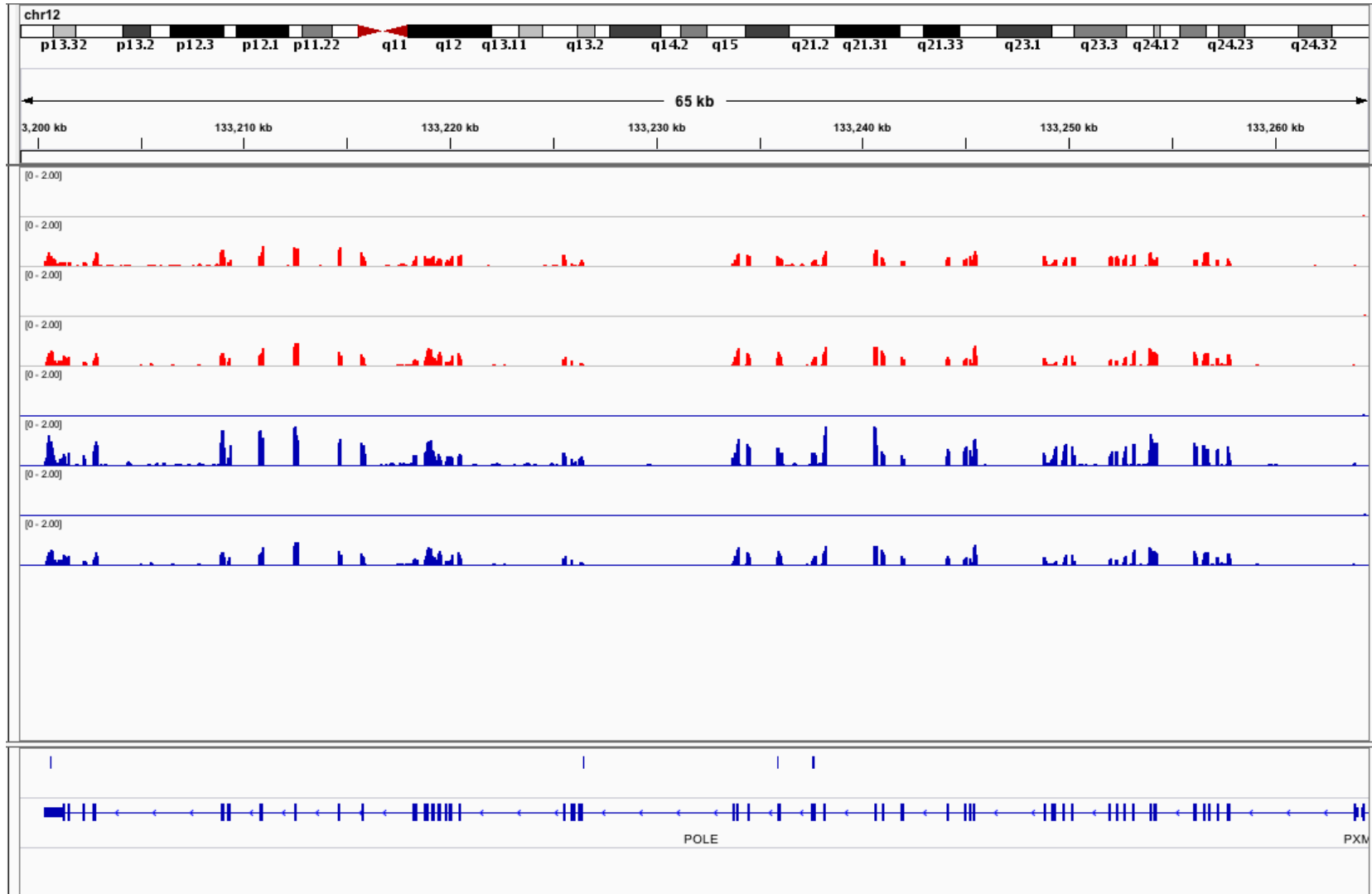
# POLE - 3' UTR

KD rep1 plus  
KD rep1 minus  
KD rep2 plus  
KD rep2 minus  
Ctl rep1 plus  
Ctl rep1 minus  
Ctl rep2 plus  
Ctl rep2 minus

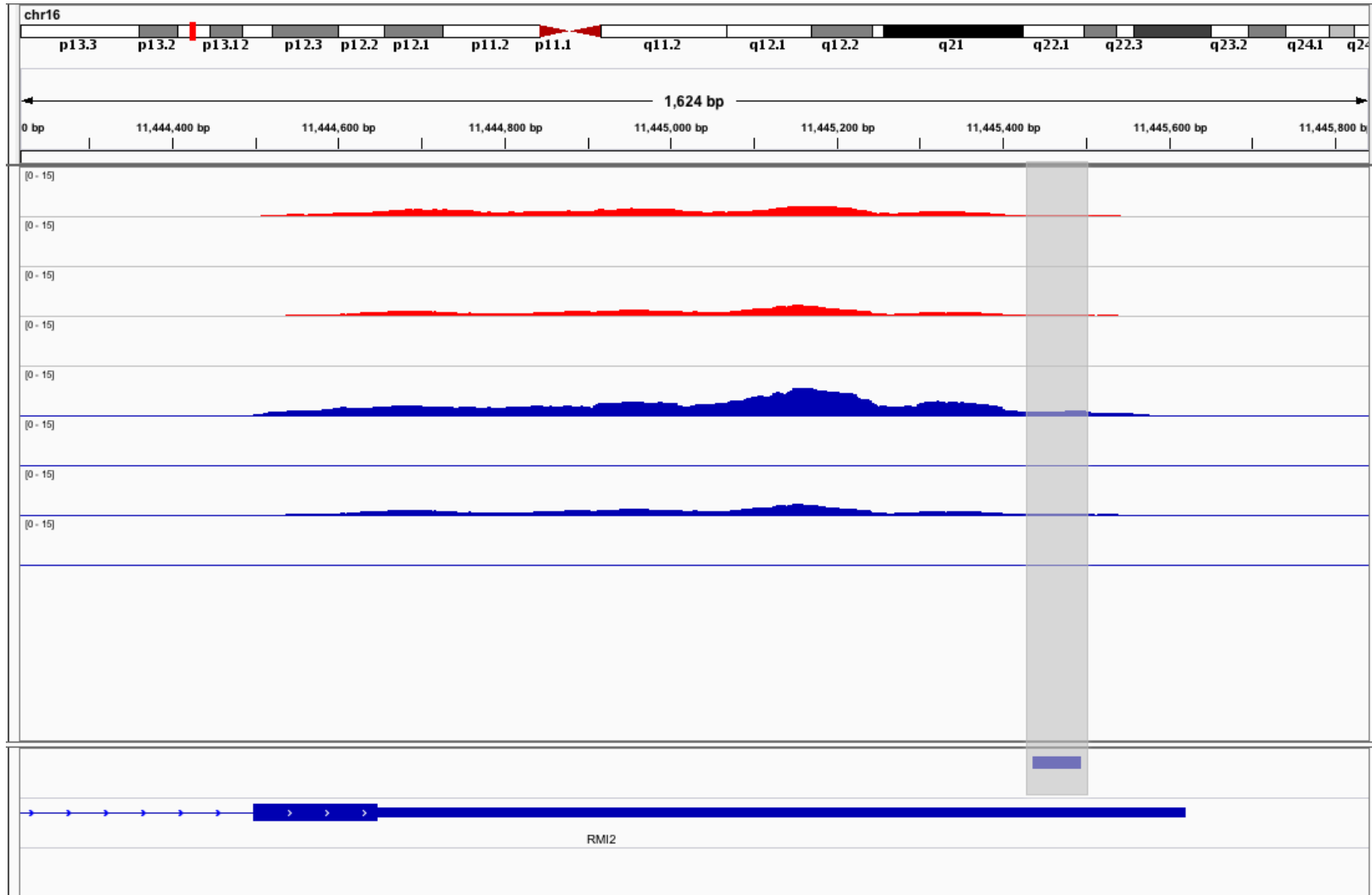
Sub1 binding  
RefSeq gene



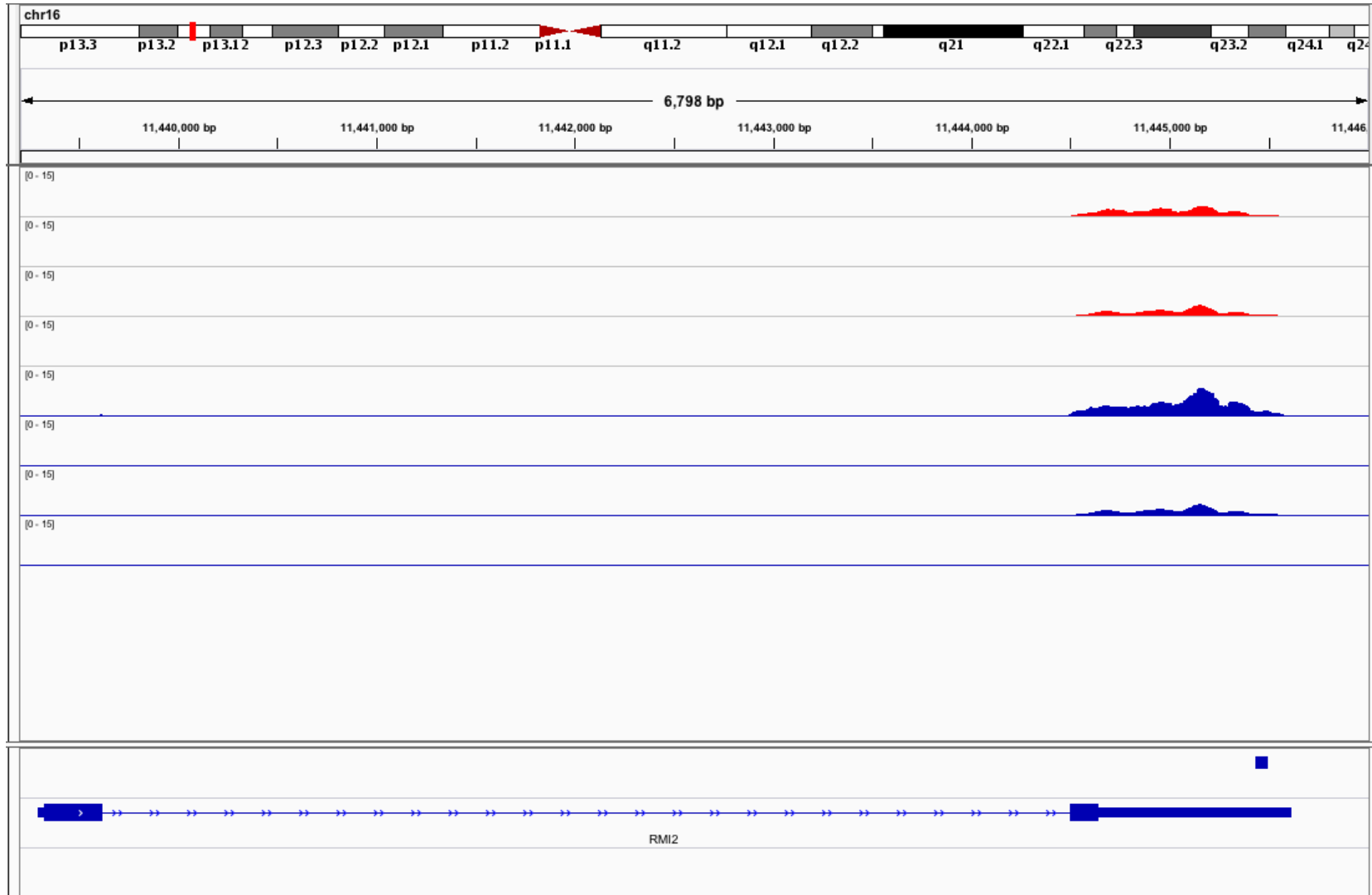
# POLE - Gene



# RMI2 - 3' UTR

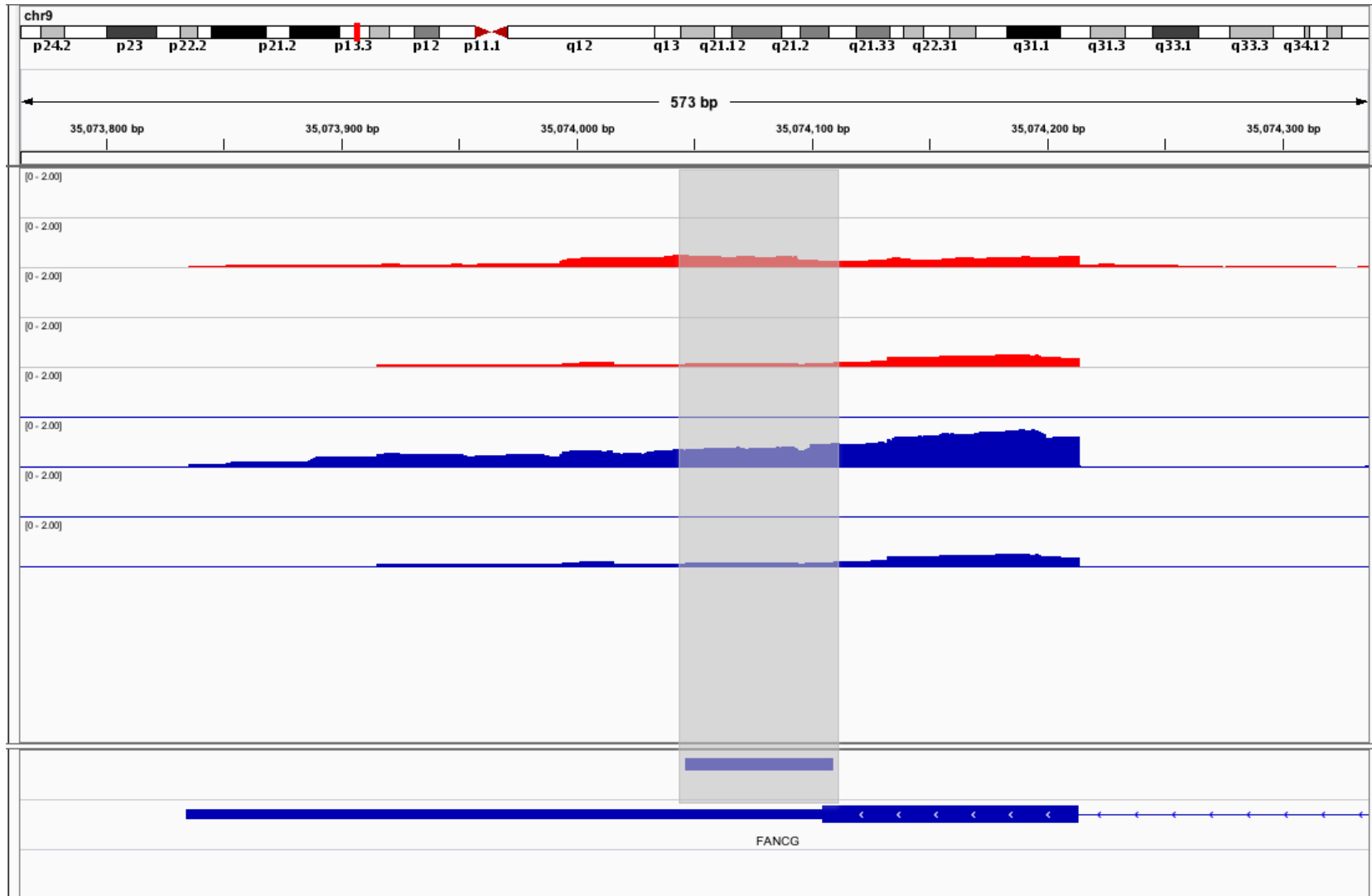


# RMI2 - Gene

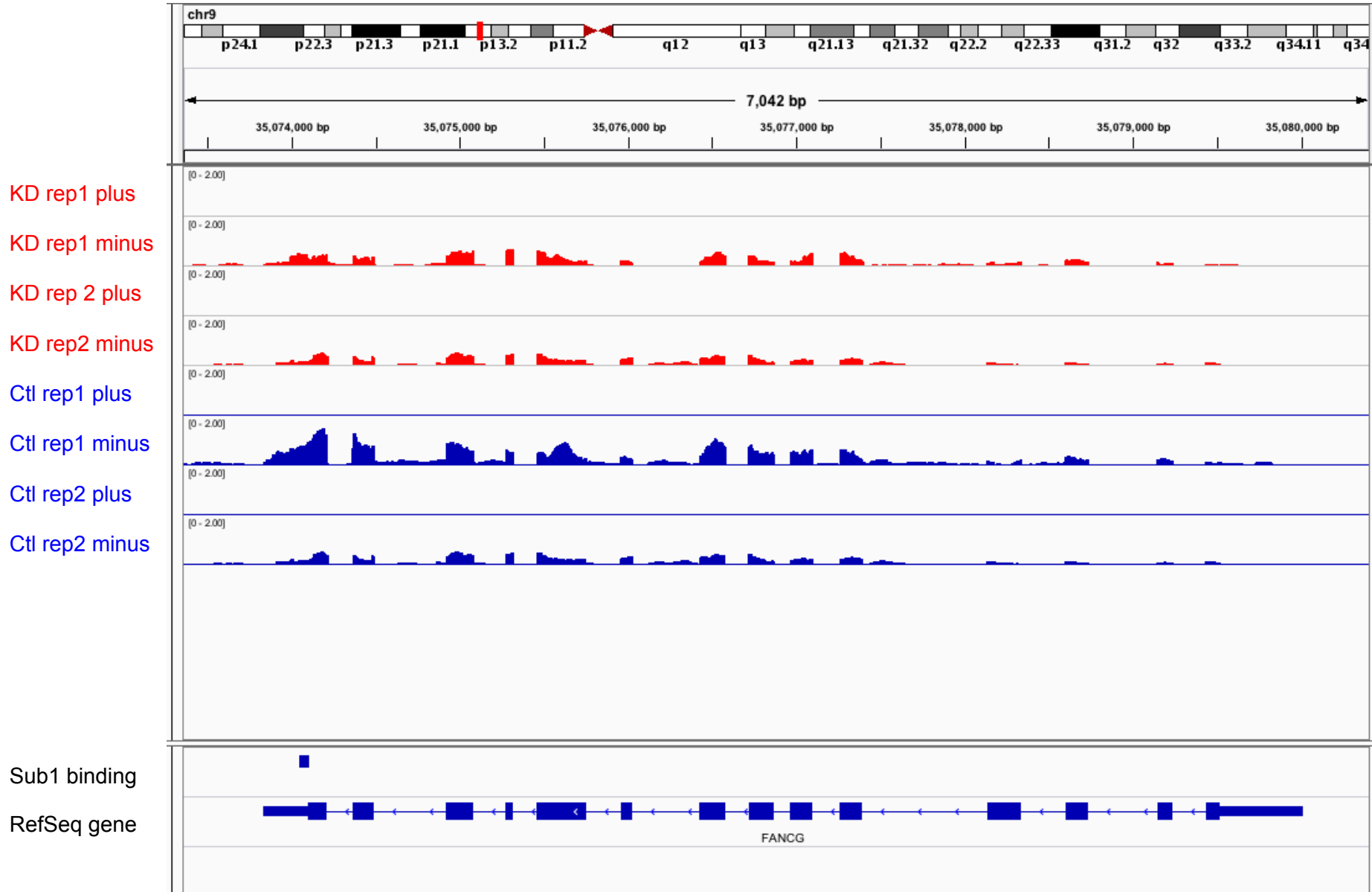




# FANCG - 3' UTR



# FANCG - Gene





# Expression of SUB1 target CGC genes

