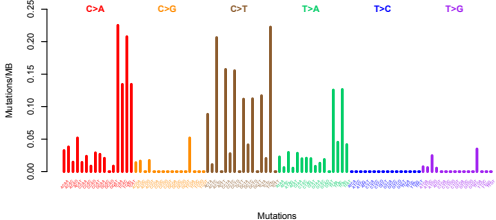
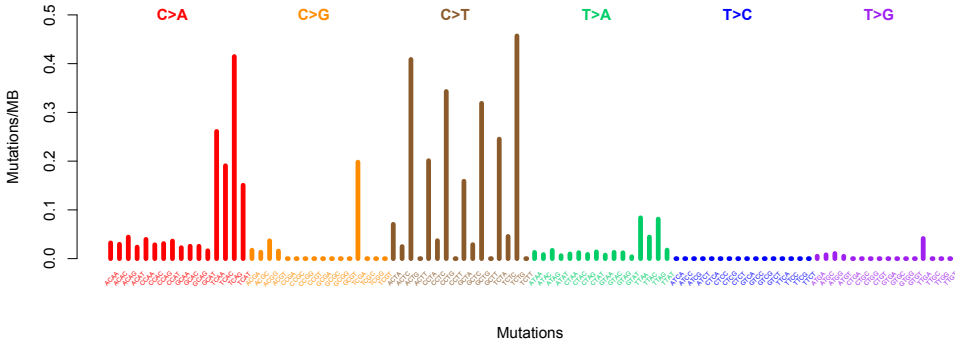


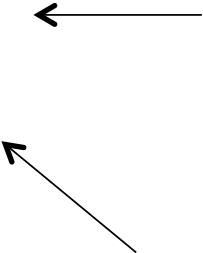
Premature stops (N = 525)



Premature stops (Pancancer, N = 9617)

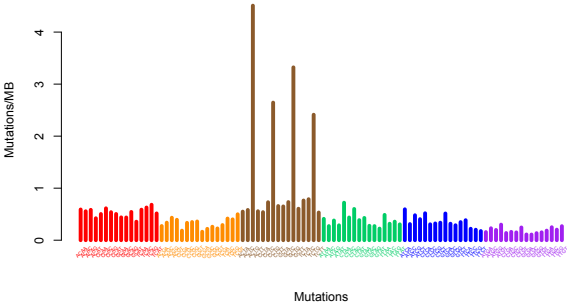


All T>Cs, most of the T>Gs/C>Gs, and N[C>T]Ts are impossible

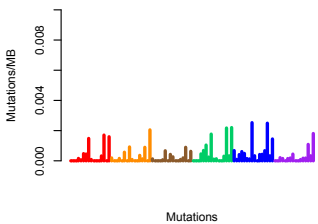


# Kidney RCCs

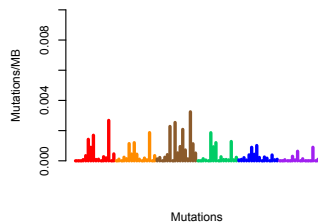
All



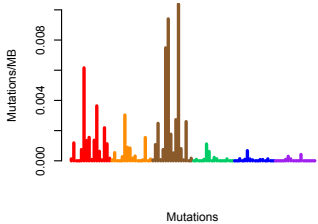
HDAC2 (N=675)



EWSR1 (N=514)

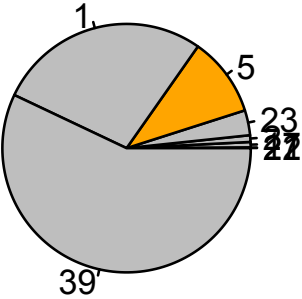
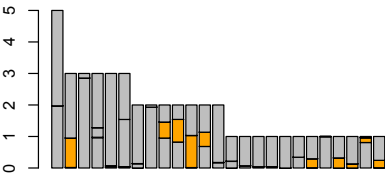


SP1 (N=571)

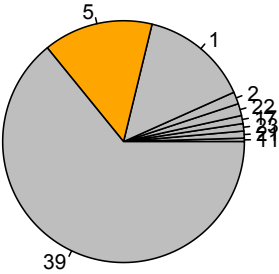
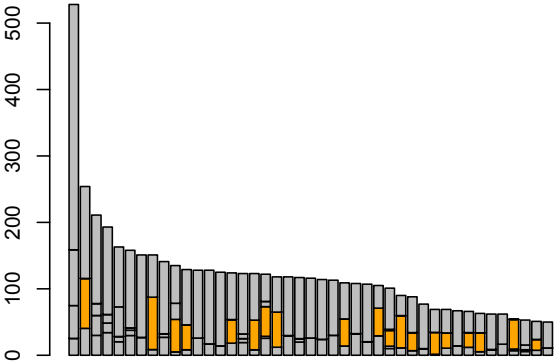


...

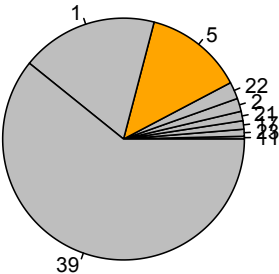
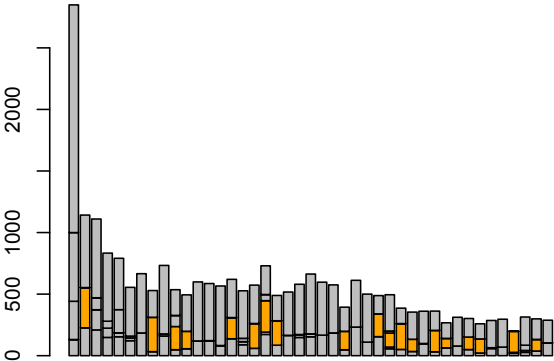
# Kidney chRCCs



Premature Stops

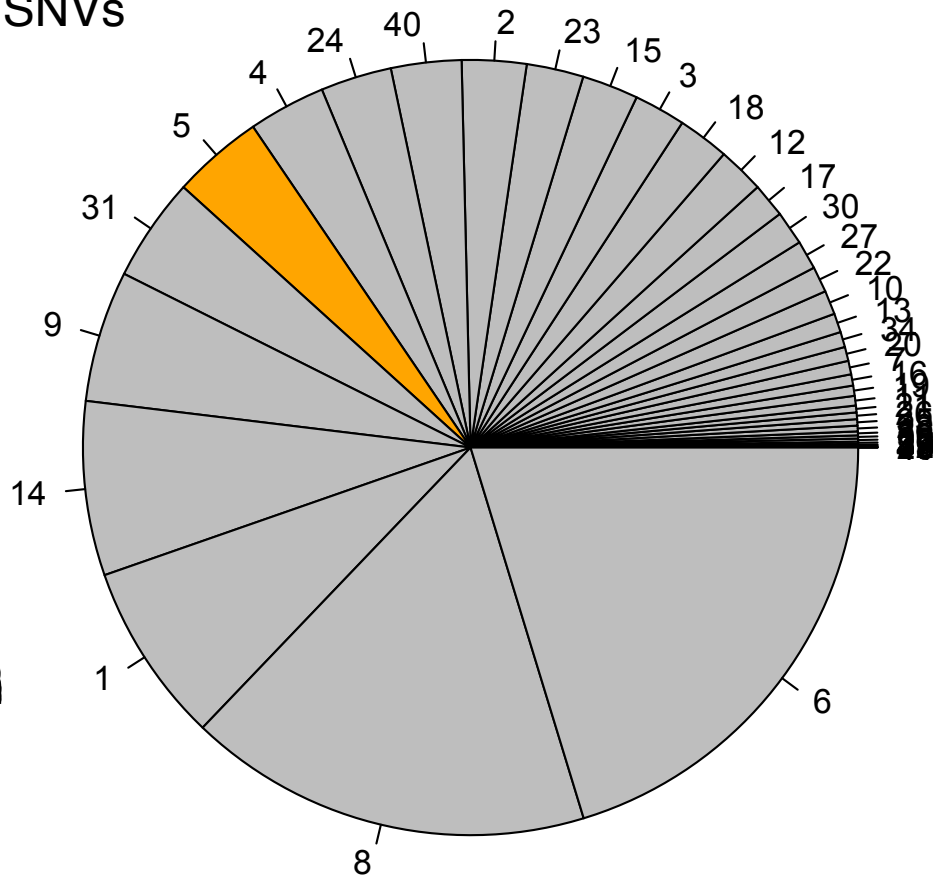


High impact nc.

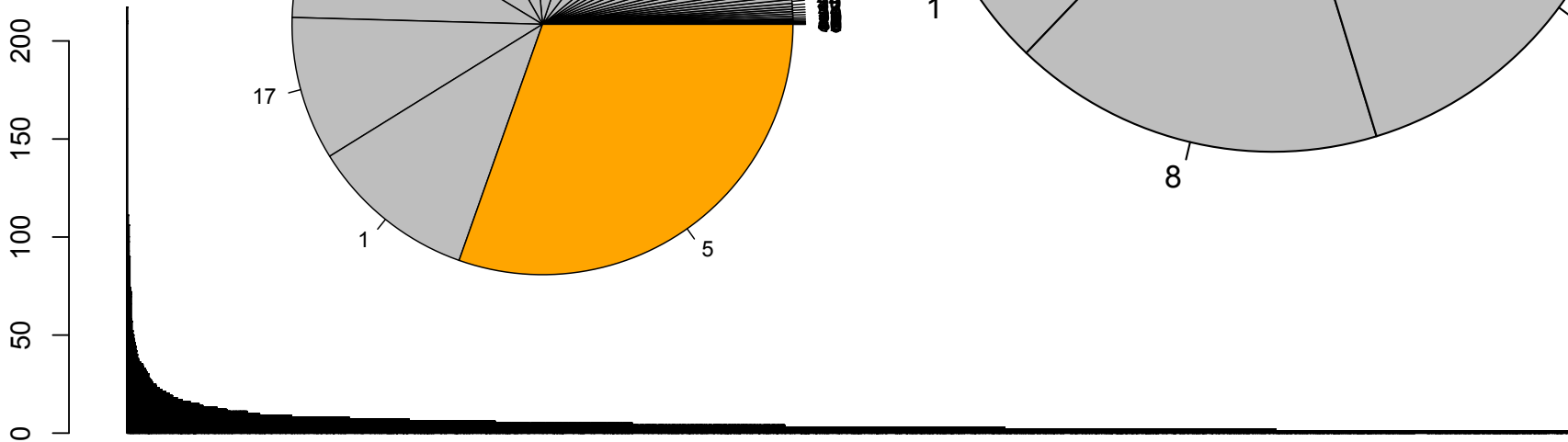
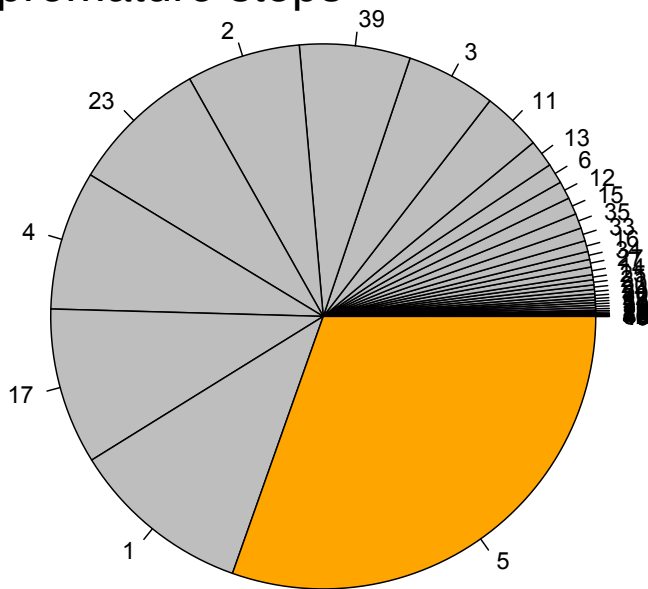


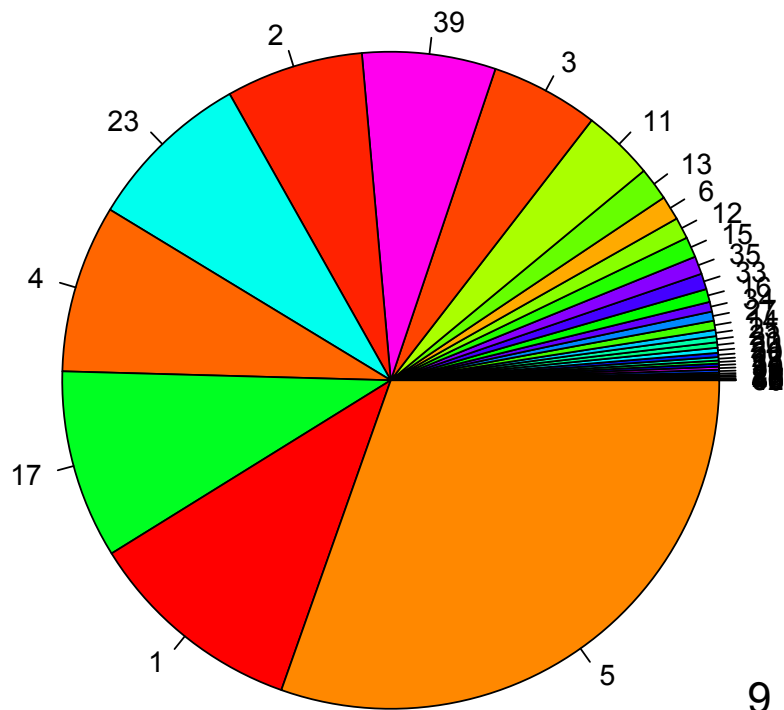
Low impact nc.

# All SNVs



# Pancancer premature stops





Pancancer premature stops

