

# Cloud Credits Pilot Vendor Day Event

August 31, 2017

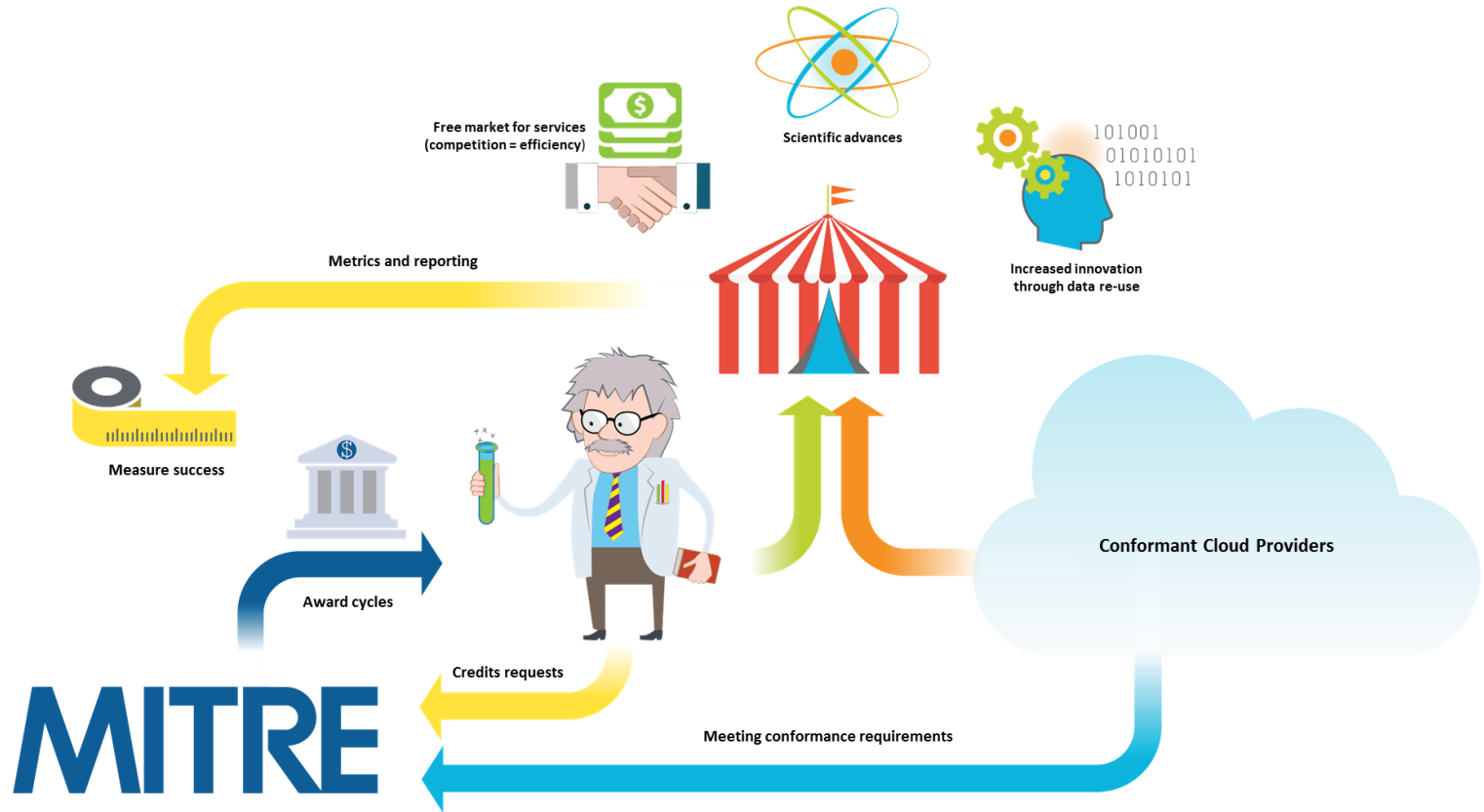




# Meeting Pre-notes

- All attendees are on mute, by default, and will not be unmuted.
- All attendees are able to enter questions into the IM dialog box of the meeting window. Time permitting, these will be asked by MITRE on behalf of the questioner.
- The recording of this meeting, and all the materials, will be provided to the attendees. The mechanism for this will be determined in the near future, and depends on the size of the full compendium of materials.
- MITRE has requested 508 compliance for all materials, but does not guarantee such compliance.
- For technical challenges joining the meeting, please refer to the technical help materials provided beforehand.
- For in-meeting issues: please contact [Ruth.Seeley@us.gt.com](mailto:Ruth.Seeley@us.gt.com)

# Cloud Credits Pilot Fundamentals, Overview



How can NIH test a new way to support research? With a pilot.



# Cloud Credits Pilot Fundamentals

- Cloud Credits (aka “Credits”) are dollar denominated resources usable at pre-vetted (“conformant”) cloud vendors taking part in the pilot. These are not grants, and participants are responsible for their own overages.
- The scoring paradigm used scientific merit, risk, and value of Digital Object pledges. NIH made all final decisions on Credits recipients, including yes/no, and amounts provided.
- Biomedical research investigators will be using these provided Credits to help advance their own scientific efforts, while also helping MITRE and NIH test this operational paradigm.
- A key features of this Pilot process includes the use of centralized and normalized agreements with vendors that conform to NIH specifications.
- Pilot Portal can be found at: <https://www.common-credit-portal.org>.
- Participants can always reach MITRE using the helpdesk feature on the Portal (see supplementary materials), or at the service address email box: [commons\\_credits@mitre.org](mailto:commons_credits@mitre.org).
- Further overall program details from NIH’s perspective can be found at: <https://commonfund.nih.gov/bd2k/cloudcredits>.



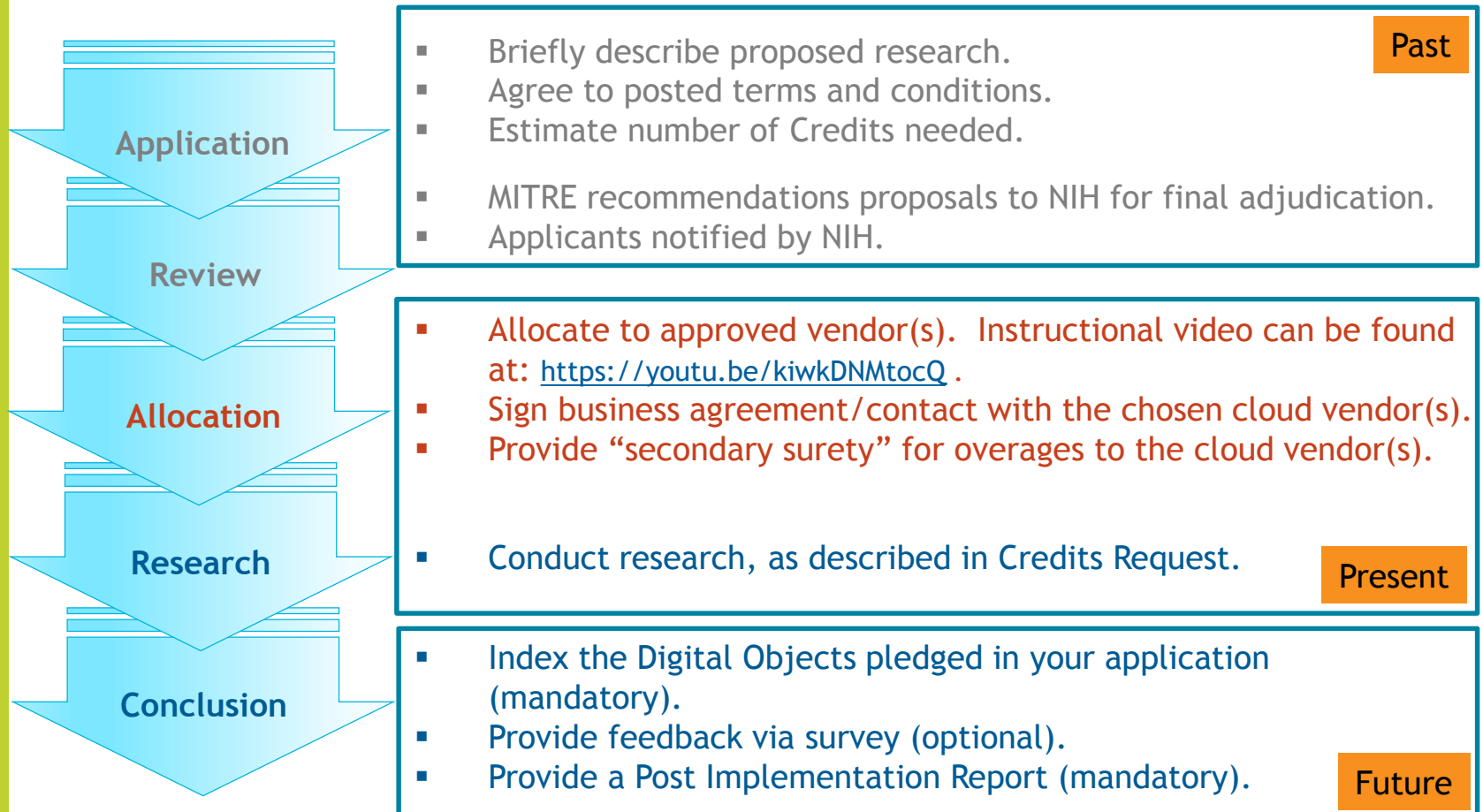
# Desired Outcomes of the Pilot

- To compare the Cloud Credits model to traditional mechanisms of funding computation-based scientific research, and in doing so determine whether it provides any of the following:
  - Greater cost-benefit.
  - Greater scalability.
  - Increased research productivity.
  - Advanced science or data science not possible otherwise.
- Fill significant gaps in data or capabilities available to the medical research community.
- Explore an approach leading to revolutionary advances in the rapidity, quality, and cost of medical research.
- Yield persistent Digital Objects, shareable and reusable by the scientific community.

Data collected in the Pilot will be used to drive a detailed business case analysis for the NIH, which will help determine the suitability of this approach, as well as refinements needed



# Status in the Overall Process



Allocations must be complete by September 8th



# Participation is Straightforward

- Credits are available for use until September 1, 2018 (per terms and conditions agreed to during submission).
  - They will be "swept" thereafter for re-use.
- Pilot Portal will provide Credits remaining data, on a per-award basis, updated monthly, as well as other useful features.
  - Limited helpdesk and technical services to assist applicants are available through the Portal, as is a knowledgebase of informational materials.
- Direct "invoicing" to MITRE (within Credits limit) will reduce operational friction and let investigators focus on the science.
- Both credits cards and POs are accepted as "secondary sureties" at many vendors. Please coordinate with your specific vendor choices.
- Participants' forum is available on Portal for experience sharing and discussion.
- Post-implementation Report (mandatory feedback) is quick and easy.
- Voluntary survey available for further inputs from participants..
- This activity, including funds and objectives, may need to be reported to NIH Program Officers as part of yearly reporting requirements. Coordinate with your PO.
- Vendors may support various types of account transfers or related actions. For the subset who answered MITRE's inquiry on this already, please see supplementary materials.

Please review the terms and conditions for additional key details



# Vendor Participants in Pilot

- Details on all nine vendors, and the pricing of their offerings, are available on the services menu page.
- All nine vendors are presenting today as follows:

▪ IBM	1:15-1:30	Non-AWS Grouping
▪ Onix	1:30-1:45	
▪ CDW-G	1:45-2:00	
▪ DLT	2:00-2:15	Primarily IaaS Grouping
▪ REAN Cloud	2:15-2:30	
▪ Omnibond/CloudyCluster	2:30-2:45	AWS Grouping
▪ Seven Bridges Genomics	2:45-3:00	
▪ Informatics LLC/MolBioCloud	3:00-3:15	
▪ Figshare	3:15-3:30	

Reminder: allocations must be complete by September 8<sup>th</sup>!

Let's begin...



# Supplementary Slides



# The Commons Credits Pilot, a Pathway for Innovation

- NIH engaged the CMS Alliance to Modernize Healthcare (CAMH) federally supported research and development center, operated by MITRE for HHS, to conduct a pilot for NIH through September 2018 to evaluate the use of the Credits Model.
  - This model is designed to help NIH better support investigators obtain computational resources to perform biomedical computational research.
- Eligibility criteria include holding an NIH grant at the time of the application and award, and agreeing to the terms and conditions (T&Cs) of the pilot. These T&Cs include, but are not limited to:
  - Agreeing to submit pledged Digital Object (tools, data, or workflows) for indexing through bioCADDIE. Shared artifacts may have appropriate access or usage restrictions
  - Accepting responsibility for protecting intellectual property (IP) consistent with their home institution's rules and regulations, and with U.S. law.
  - Acknowledging that the credits distribution amount constitutes the full amount of funding that will be provided, and that the recipient is responsible for all overages.

**This is not a grants process, and distributions of Credits are not grants**

# Helpdesk

A question can be entered in the Question field. The user may search for existing questions by entering a term in the Search field and pressing return; the last Uniform Resource Locator (URL) visited will be included in the request

The image shows two overlapping screenshots of a web-based helpdesk interface. The top screenshot displays the 'Help Center' page with a navigation bar containing 'Dashboard', 'Knowledgebase', 'FAQ', and 'Help'. Below the navigation bar is a search input field, followed by buttons for 'Ask a question', 'My Support tickets', and 'FAQ'. The 'Ask a question' section includes a 'Question' text area, a 'Tags' input field, and a 'URL' field with the text 'https://www.common-s-cr' and a 'Submit' button. The bottom screenshot shows the 'My Support Tickets' page, also with the same navigation bar. It features a search input field, buttons for 'My Support tickets' and 'My closed Support tickets', and a list of tickets. The first ticket is titled 'Do my awarded Commons Credits expire?' and includes the date 'July 13 2016 by Investigator', a 'credit' icon, and the text 'Logged in users Edit'.

# Knowledgebase

*The Knowledgebase contains various pages that can help users understand more about cloud computing and how to apply it to their research.*

Dashboard

Knowledgebase

FAQ

Help

## All site pages



### Sample Credit Request Application

*Last updated yesterday by [eldred ribeiro](#)*

 [Sample Credit Application Submission](#)

[Logged in users](#)

[History](#)

Proposed Research and Impact: A recent innovation in the field of pathology is the Tissue Microarray (TMA). TMAs are capable of holding hundreds of representative tissue samples assembled on a microscope slide, and permitting high-throughput...



### References

*Last updated 42 days ago by [Portal Administrator](#)*

[Logged in users](#)

[History](#)


Reference Title Benchmarking Lee Gillam et al., Fair Benchmarking for Cloud Computing Systems, University Surrey, March 2012 Cloud Computing Parul Kudtarkar et al., Cost-Effective Cloud Computing: A Case Study...



# Current Vendor Responses Regarding “Account Transfers” (9/30/17)

Some of the Credits recipients will have existing accounts with various providers (either you directly, or an IaaS you are reselling). Can they can transfer their existing account, or in some other way link from their existing account to the Pilot, including by applying Credits to the existing account? We would like to know what options you support, if any.

- DLT: Claims to accept account transfers, and may cover this in detail in the presentation today. Via email from Doug Logar and Ray Ciesinski.
- Onix: Claims that users of GCP accounts can link their existing and new projects to the new funding without disrupting the services they have in place. Onix claims that they will create a “billing account” which will make this approach possible. Via email from Doug Sainato.
- MolBioCloud: Claims that they have a process that helps a recipient transfer an existing account to their business, allowing the funding to be applied. They also claim to offer another option, the use of a managed organization account. Via email from Vijay Nagarajan.



This artifact was produced for the U. S. Government under Contract Number HHSM-500-2012-000081, and is subject to Federal Acquisition Regulation Clause 52.227-14, Rights in Data-General.

No other use other than that granted to the U. S. Government, or to those acting on behalf of the U. S. Government under that Clause is authorized without the express written permission of The MITRE Corporation.

For further information, please contact The MITRE Corporation, Contracts Management Office, 7515 Colshire Drive, McLean, VA 22102-7539, (703) 983-6000.

@ 2017 The MITRE Corporation.

[commons\\_credits@mitre.org](mailto:commons_credits@mitre.org)