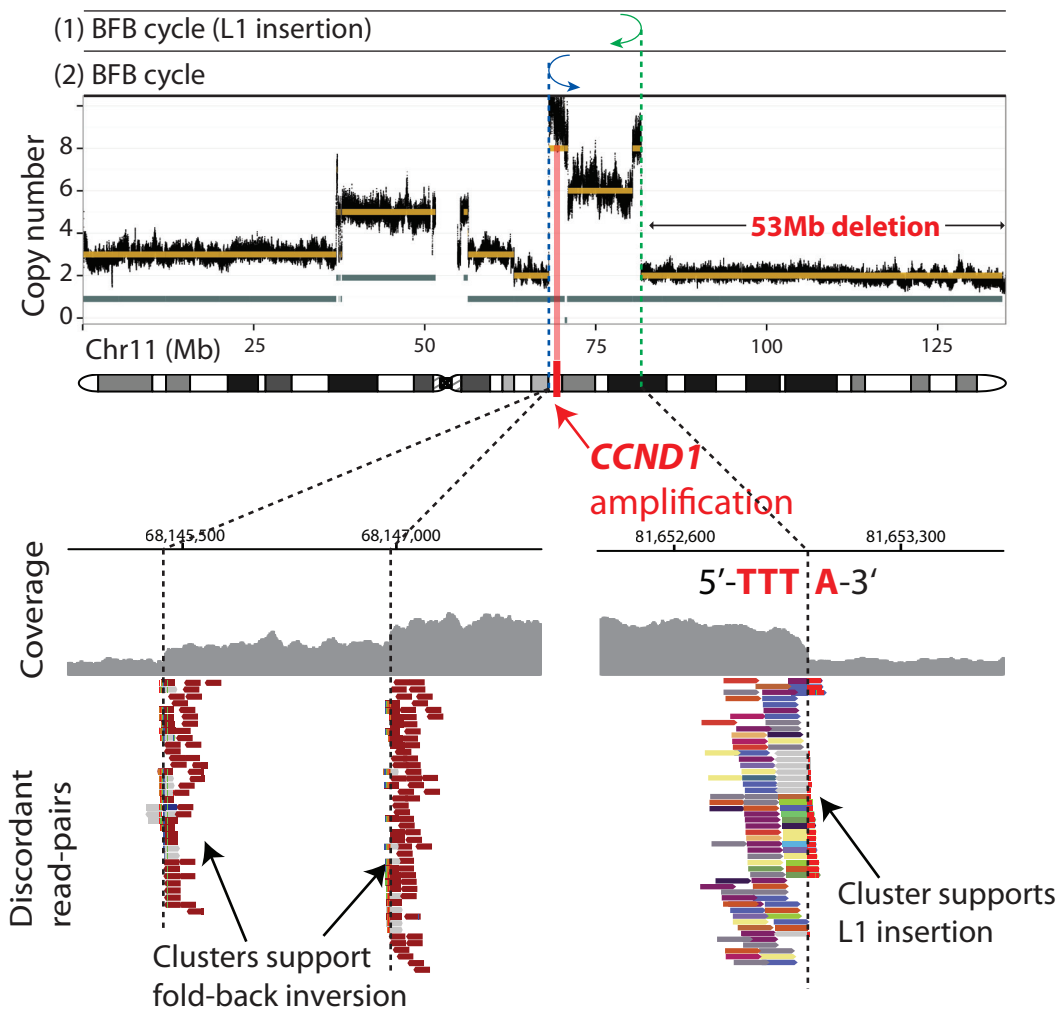


a**DO50362 (Eso-AdenoCA)****b**

Original chromosome configuration with oncogene



Somatic L1 integration promotes arm deletion



Replication followed by end-to-end fusion



Anaphase bridge (first BFB cycle)



Breakage and oncogene duplication



New anaphase bridge (second BFB cycle)

**c****DO26976 (Lung-SCC)**