

EC FigPackM

v170224

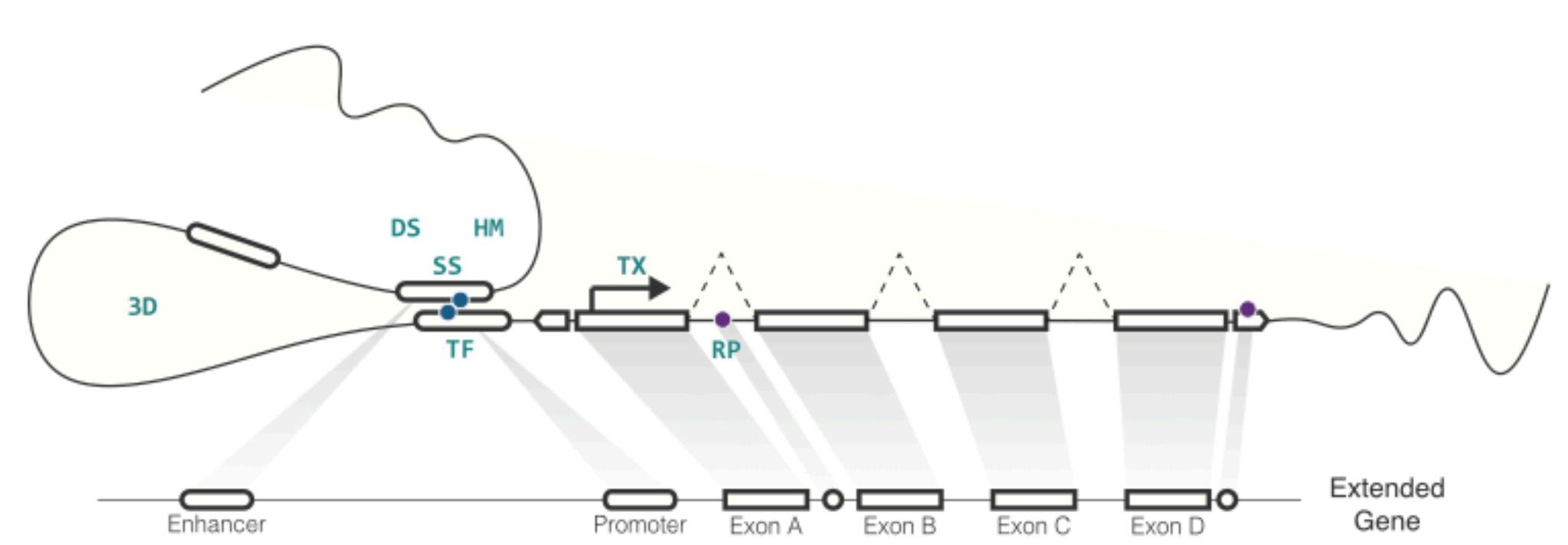
A

		K562	GM12878	HepG2	Liver	A549	IMR-90	MCF-7	MCF-10A	HeLa-S3
Transcription Factors TF	TF Total	207	99	95	7	31	9	52	4	59
	TFSS	129	71	71	6	23	6	37	3	39
	Chromatin Remodeller	17	6	6	1	2	1	2		6
	Cofactor	19	9	11		4		3		4
	General (GTF)	15	7	6		4	1	3	1	9
Histone Modifications HM	Histone	12	11	11	7	11	28	5	3	11
RNA-binding Proteins RP	eCLIP	89		70						
shRNA/siRNA Knockdown KD	TF	85		61				2		
	RBP	234		225						
3D Chromatin Structure 3D	ChIA-PET	3	3	1				4		2
	Hi-C	▲	▲			●	▲	▲	▲	
Chromatin Accessibility DS	DNase-seq	●	●	●		●	▲	●		●
	Enhancers SS	●	●	▲				●		
Methylation ME	WGBS	●	●	●	▲		▲	▲		
	RRBS	●	●	●	●	●	●	●	●	●
Transcription TX	RNA-seq	●	●	●	●	●	●	●	▲	●
	RAMPAGE	●	●							
Replication Timing RT	Repli-seq/chip	●	●	●			●	●		●
Cell Line WGS WG	SNV	▲	▲					▲		▲
	SV	▲	▲					▲		▲
Patient Data PD	Cohort	150	150	82	82	197	197	116	116	
	Expression	173		373		517		1100		546

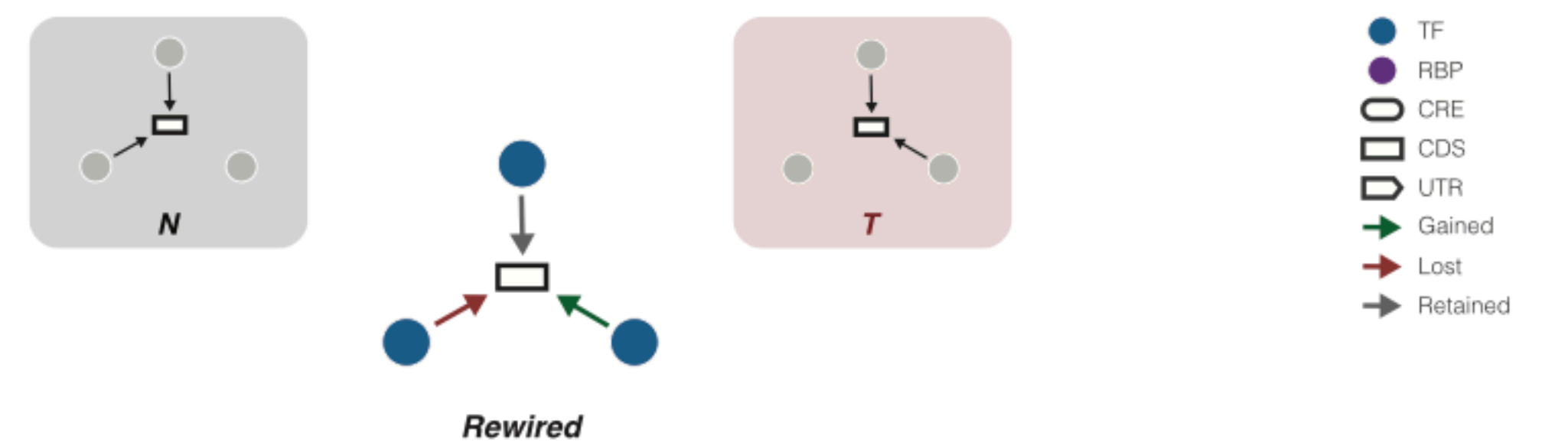
T *N*
T *N*
T *N*
T *N*
T

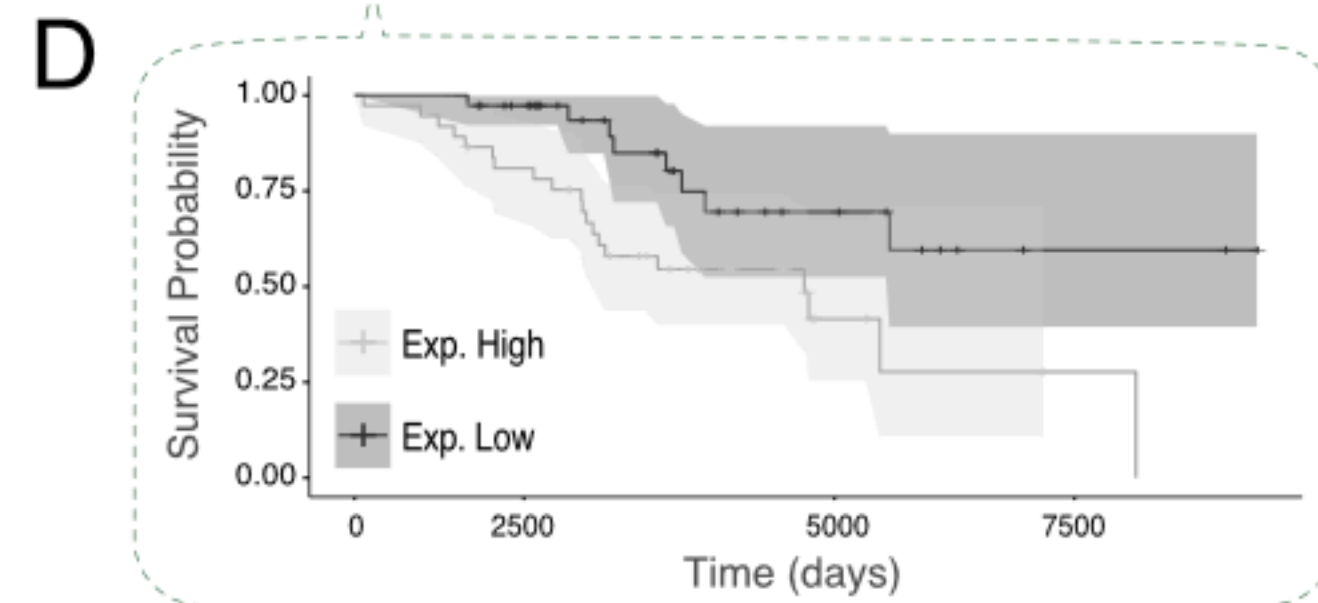
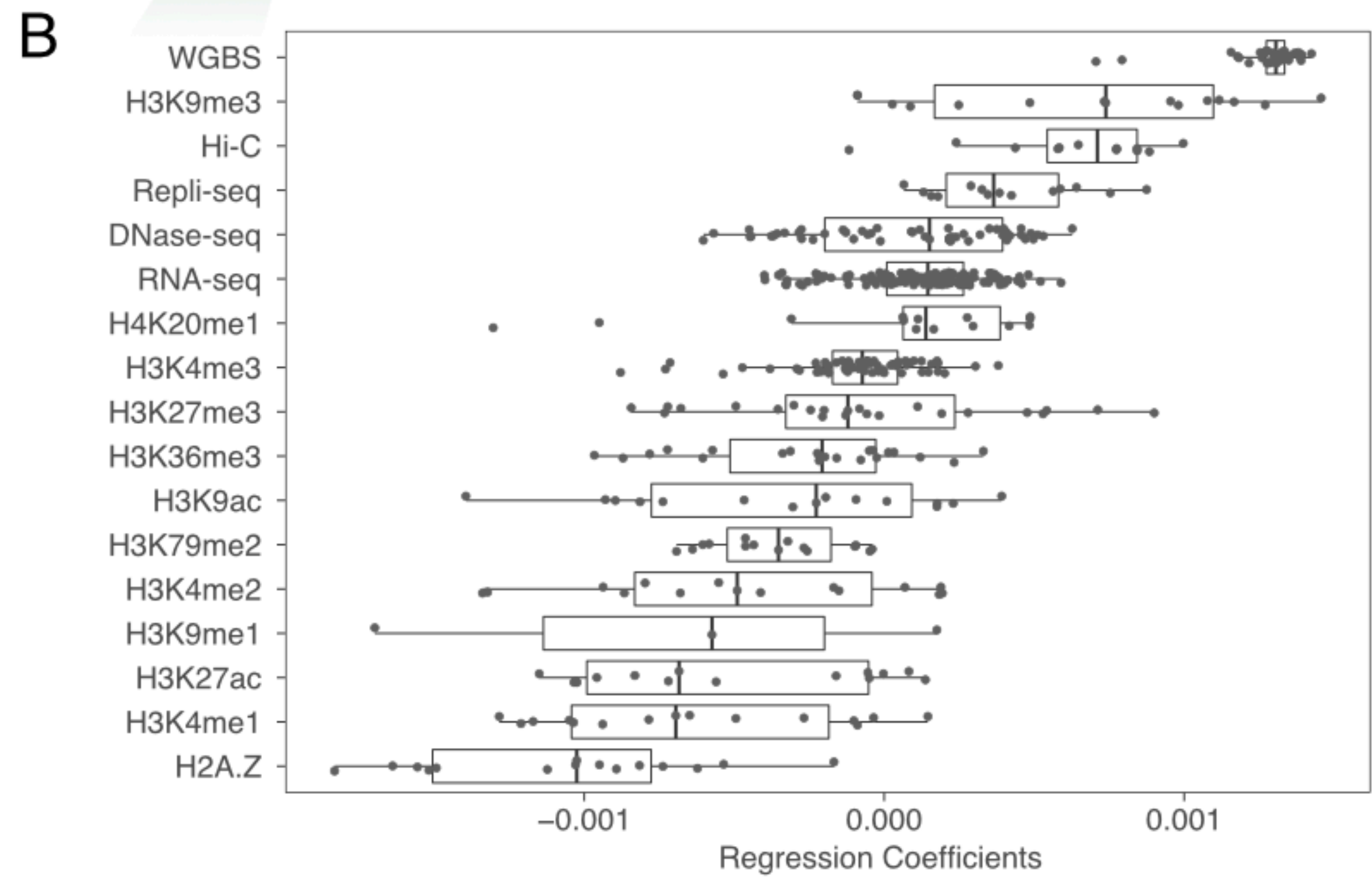
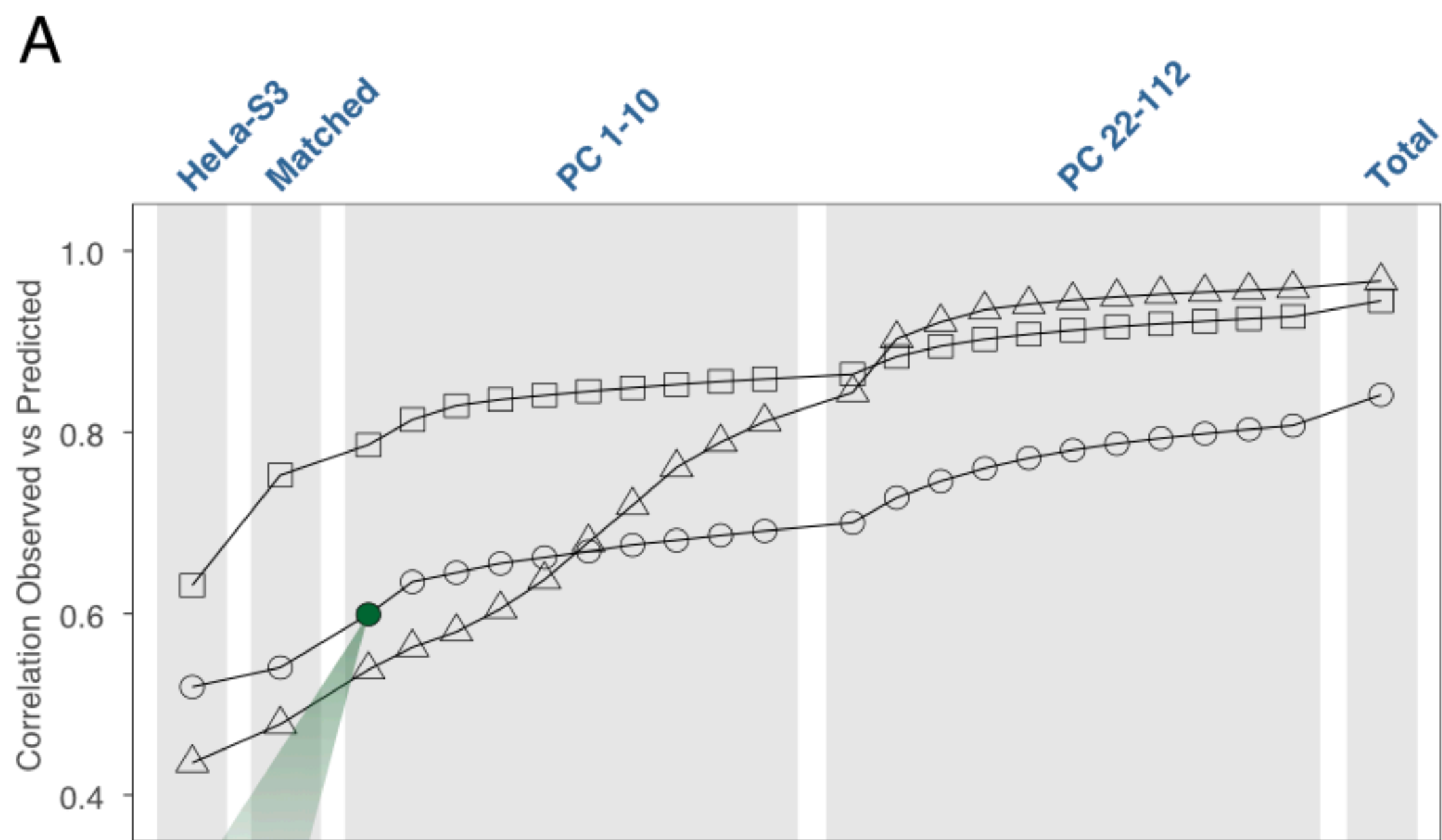
Blood
Liver
Lung
Breast
Cervix

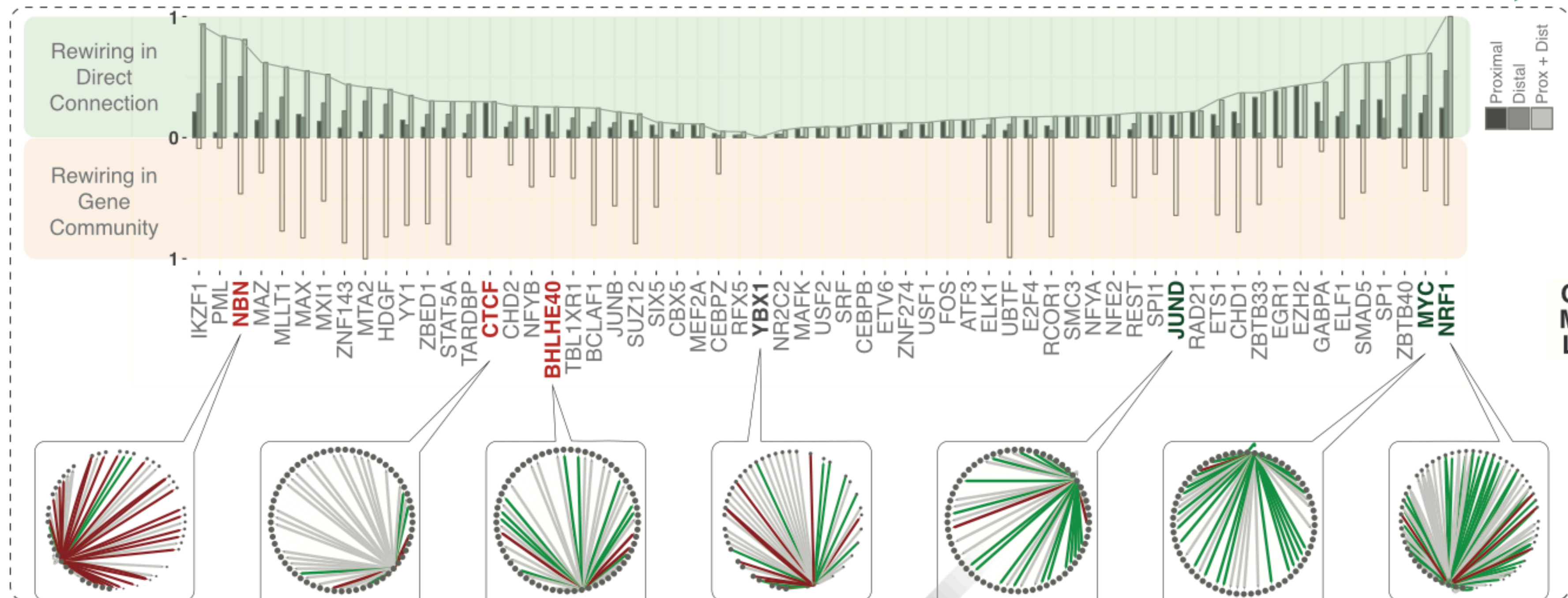
B



C







IKZF1 PML **NBN** MAZ MLLT1 MAX MXI1 ZNF143 MTA2 HDGF YY1 ZBED1 STAT5A TARDBP **CTCF** CHD2 NFYB **BHLHE40** TBL1XR1 BCLAF1 JUNB SUZ12 SIX5 CBX5 MEF2A CEBPZ RFX5 **YBX1** NR2C2 MAFK USF2 SRF CEBPB ETV6 ZNF274 USF1 FOS ATF3 ELK1 UBTF E2F4 RCOR1 SMC3 NFYA NFE2 REST SPI1 **JUND** RAD21 ETS1 CHD1 ZBTB33 EGR1 EZH2 GABPA ELF1 SMAD5 SP1 ZBTB40 **MYC** **NRF1**

