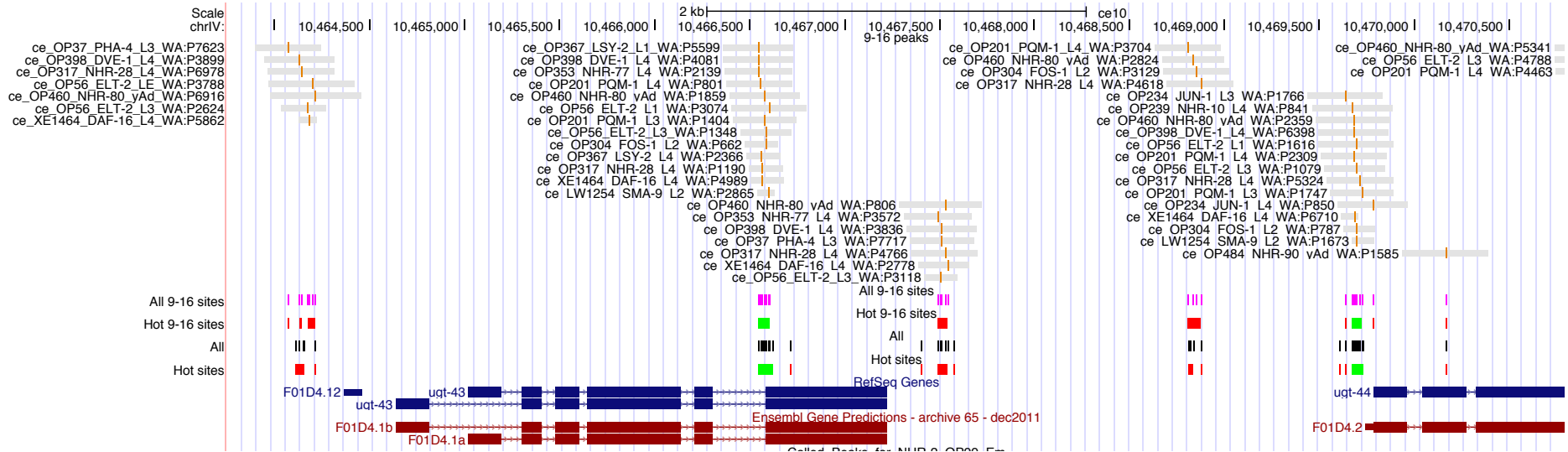


WF TF Group Call

Waterston Lab

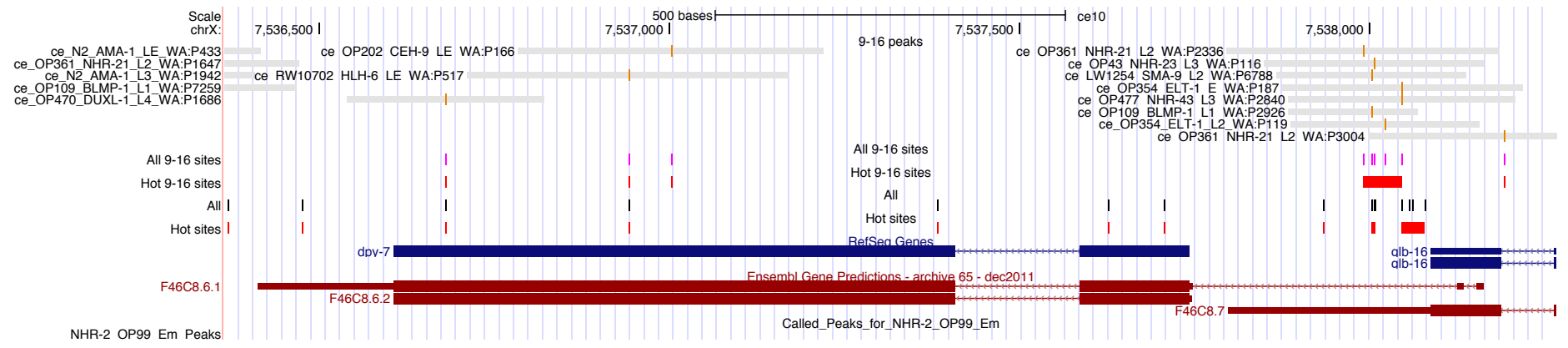
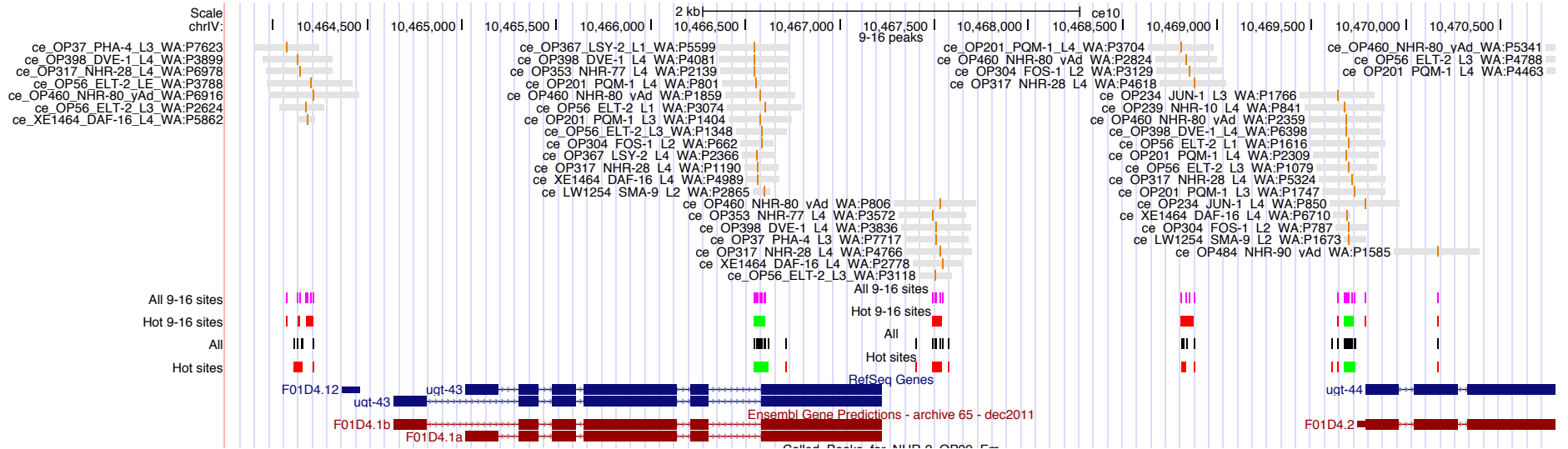
Feb. 2, 2017

Peaks cluster tightly and can show tissue specific TFs

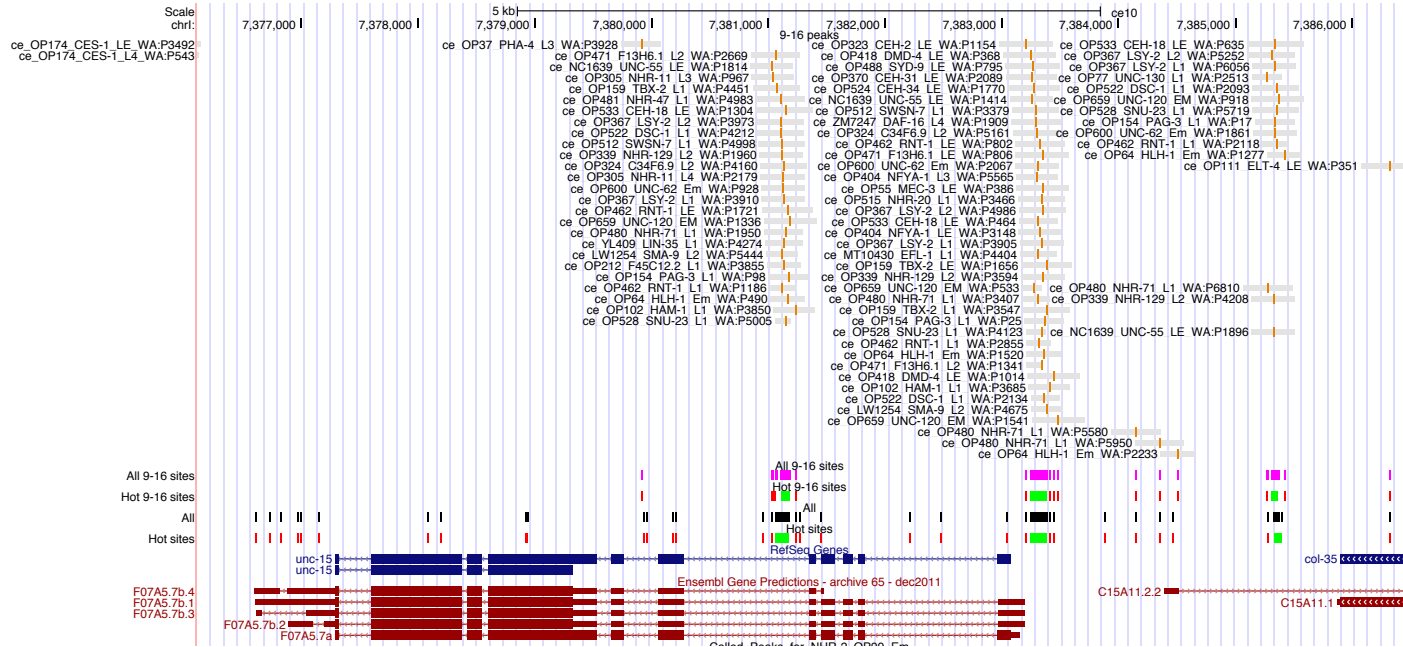


- Grey bars – peak width
- Orange line – position of peak maximum
- Each site labeled with strain, TF, stage and rank
- 9-16 sites track shows position of peak maxima
- Hot 9-16 sites track shows clusters, red, green, blue

Peaks cluster tightly and can show tissue specific TFs

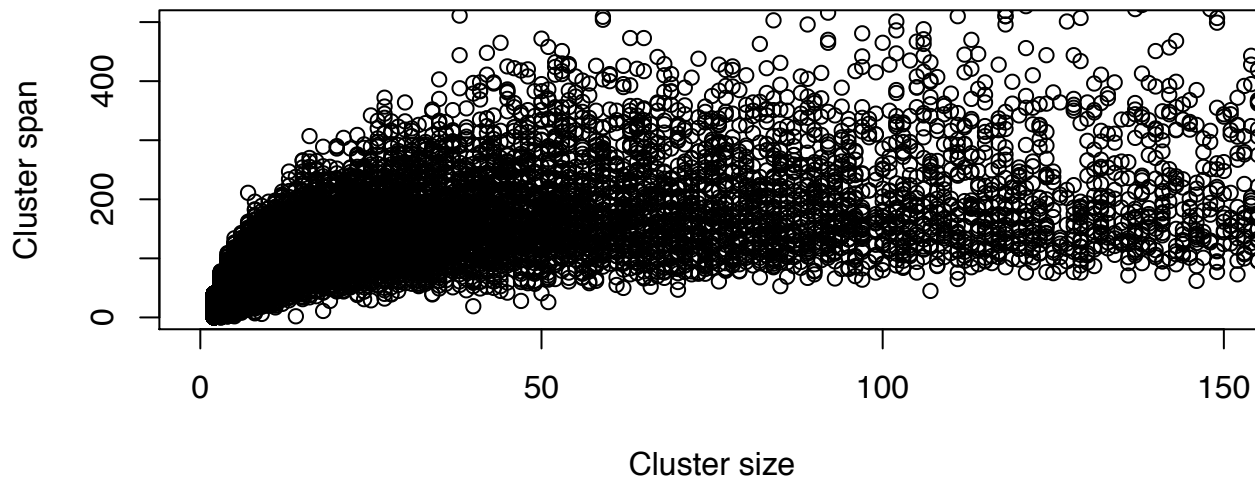
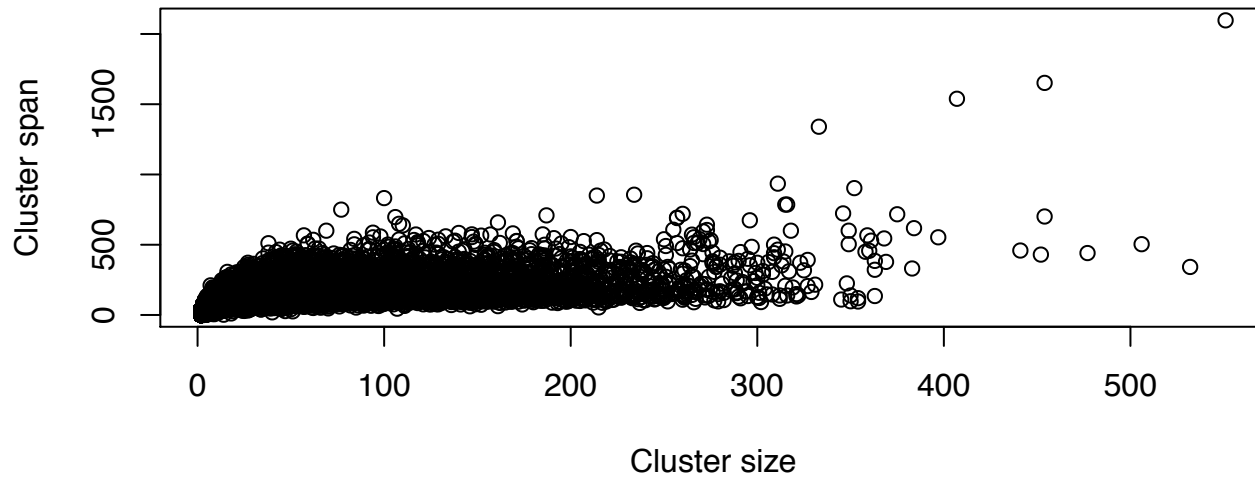


Clusters near *unc-15* include myogenic TFs



The TFs UNC-120, RNT-1, CEH-18 and UNC-62 are overrepresented in clusters with HLH-1

TF sites are tightly clustered

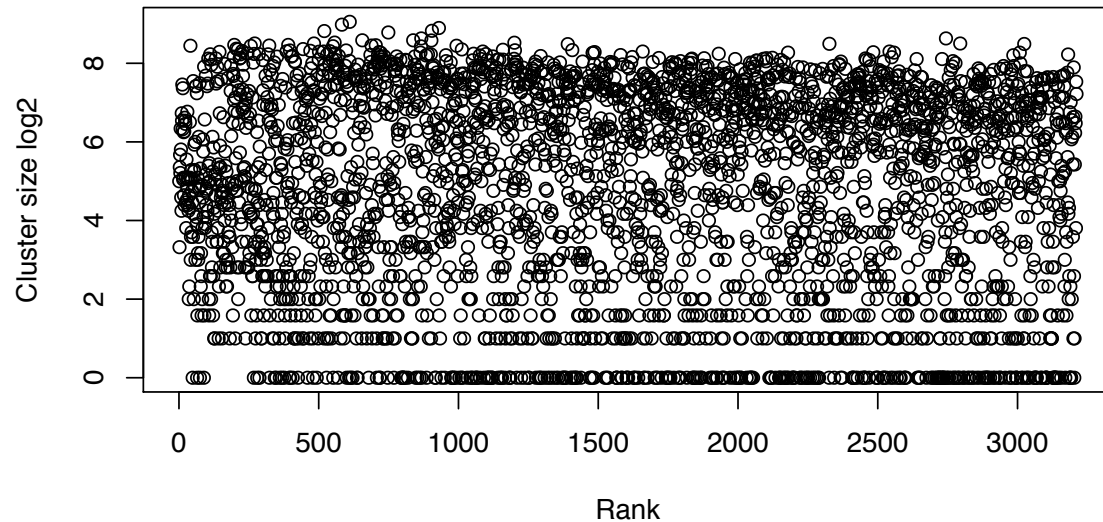
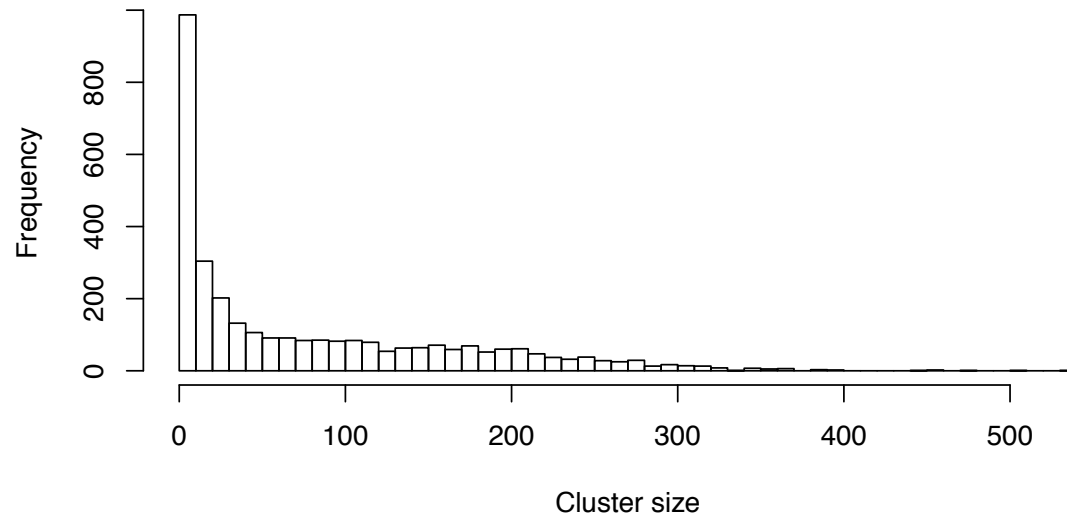


Span is distance from first to last peak in a cluster
Cluster size is number of sites in the cluster

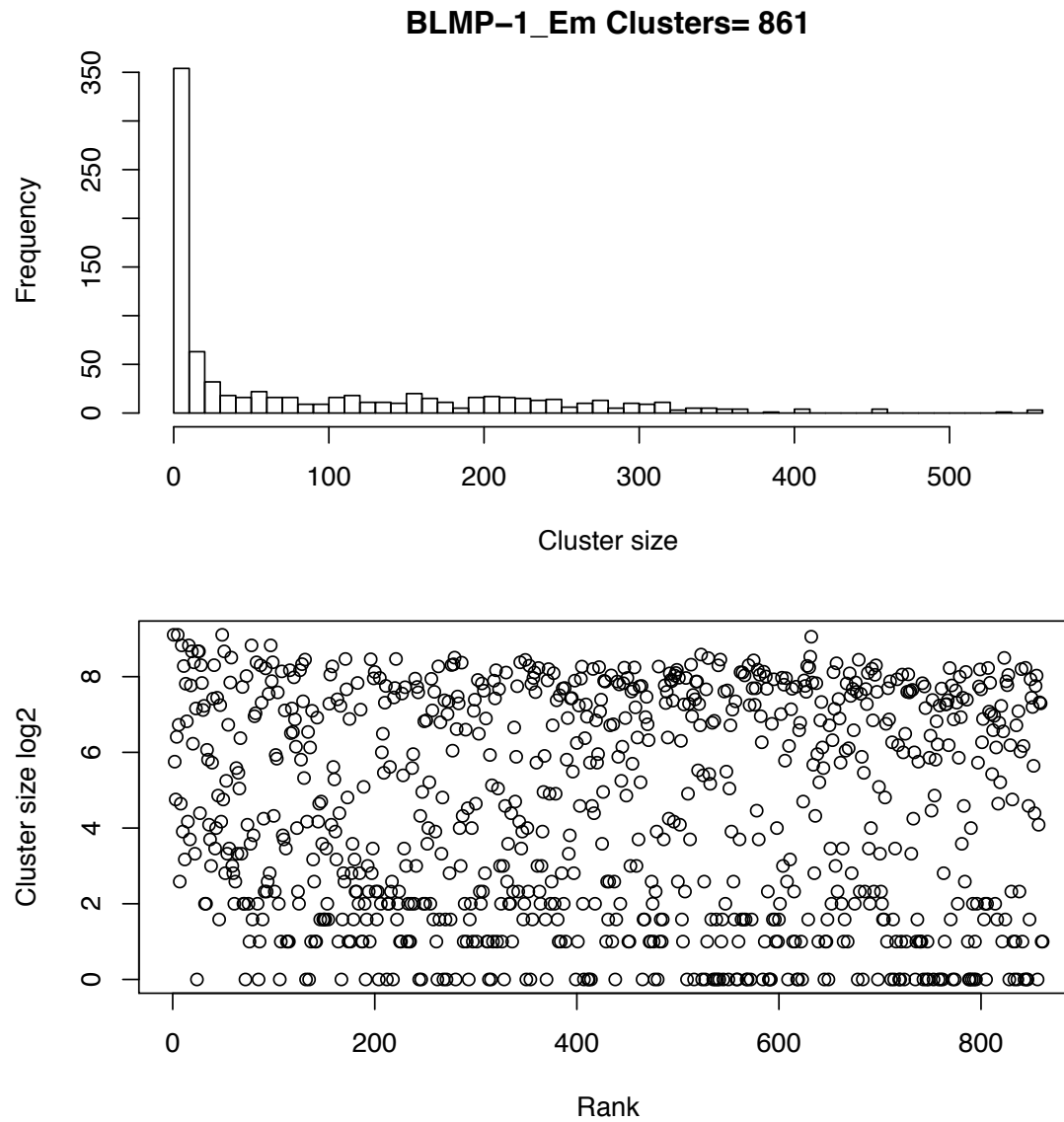
HLH-1 has many high ranking sites in small clusters

HLH-1_Em Clusters= 3211

Smaller clusters are associated with genes with tissue specific expression and genes with reduced expression in *hlh-1(ts)* muscle cells (FACS).

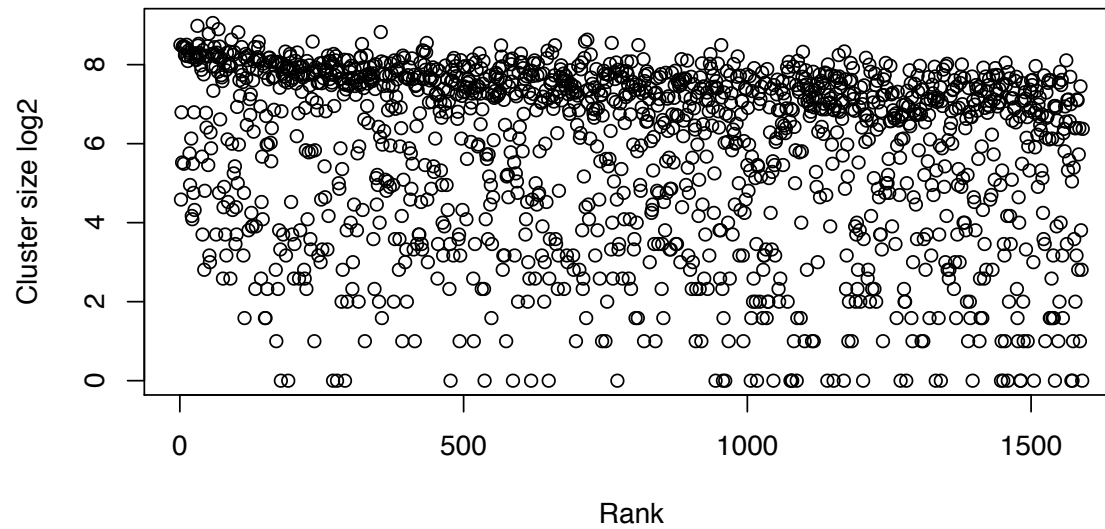
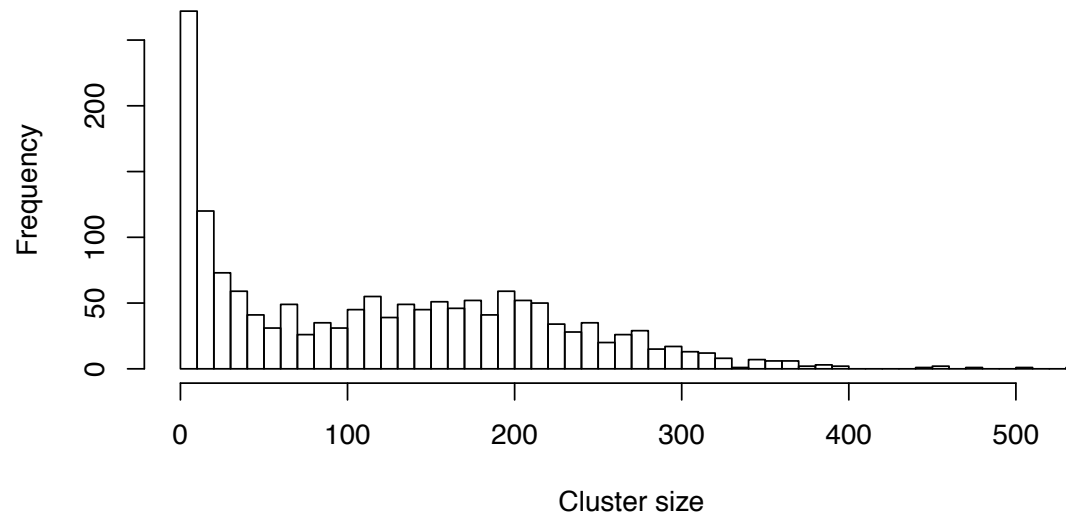


BLMP-1 has many high ranking sites in small clusters



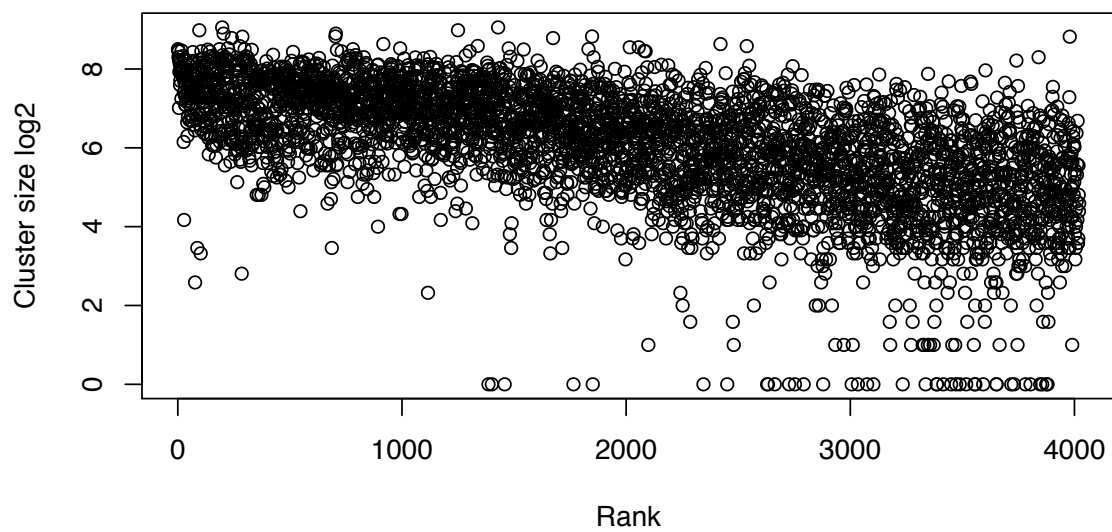
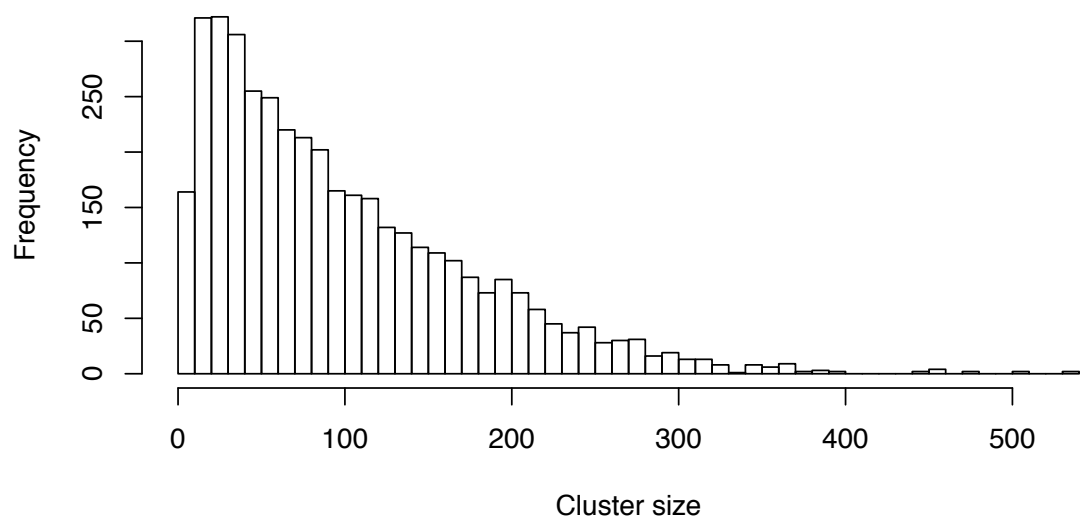
Another TF with many high ranking sites in small clusters

CEH-16_L2 Clusters= 1591



Some TFs have sites mostly in large clusters

C01B12.2_L2 Clusters= 4021



TFs with few sites may have few-to-no high ranking sites in small clusters

