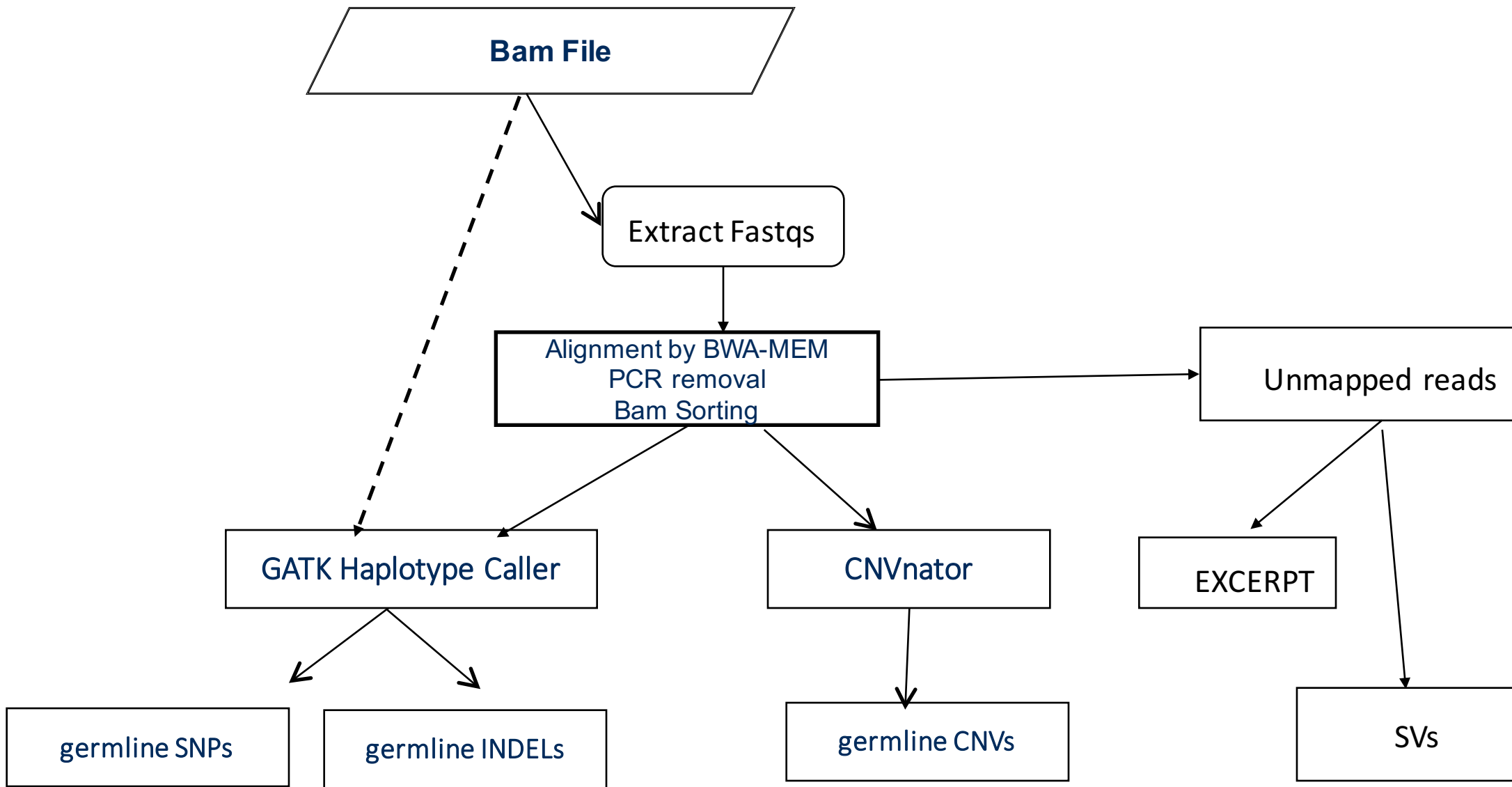


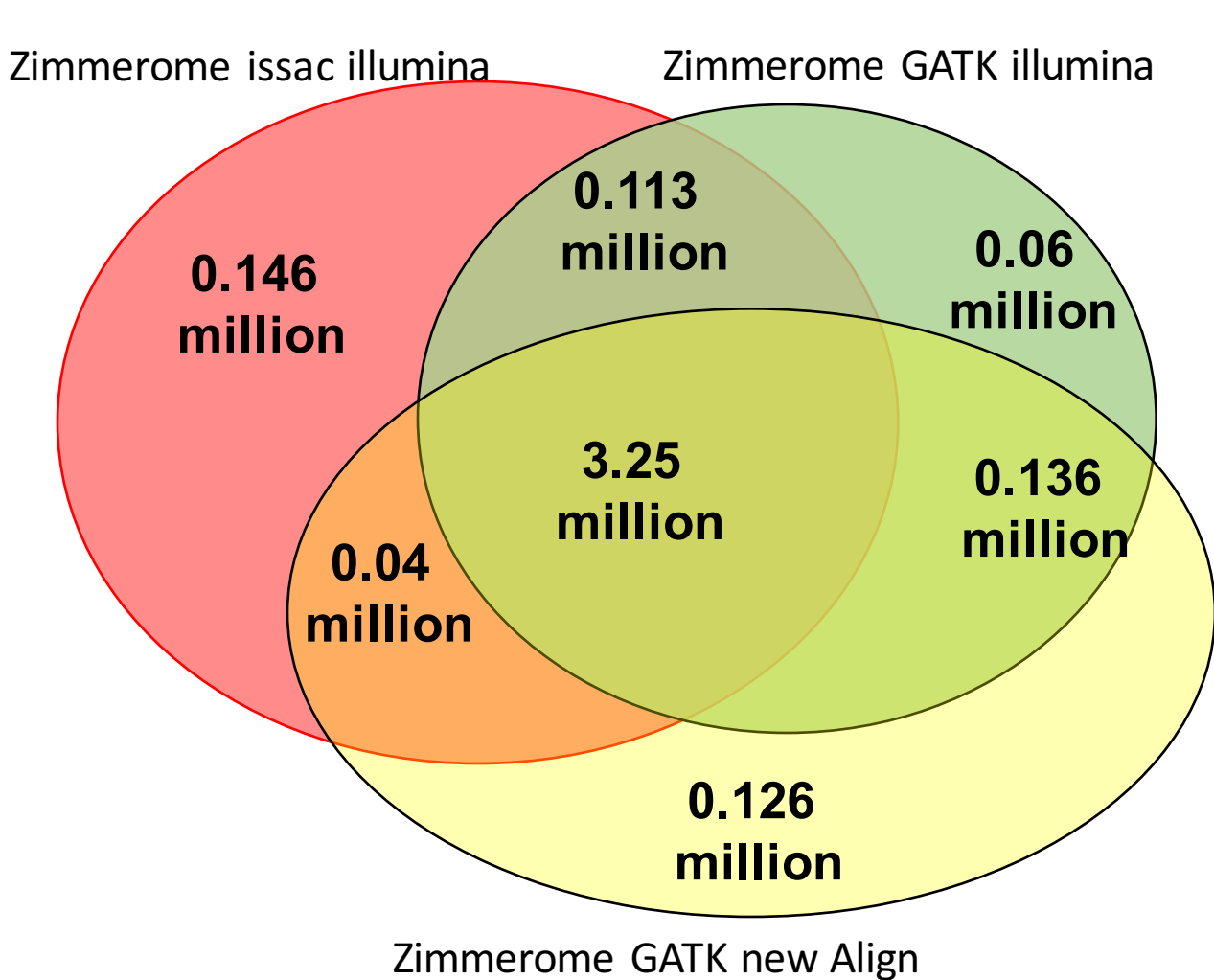
Zimmerome Analysis

P2-tech

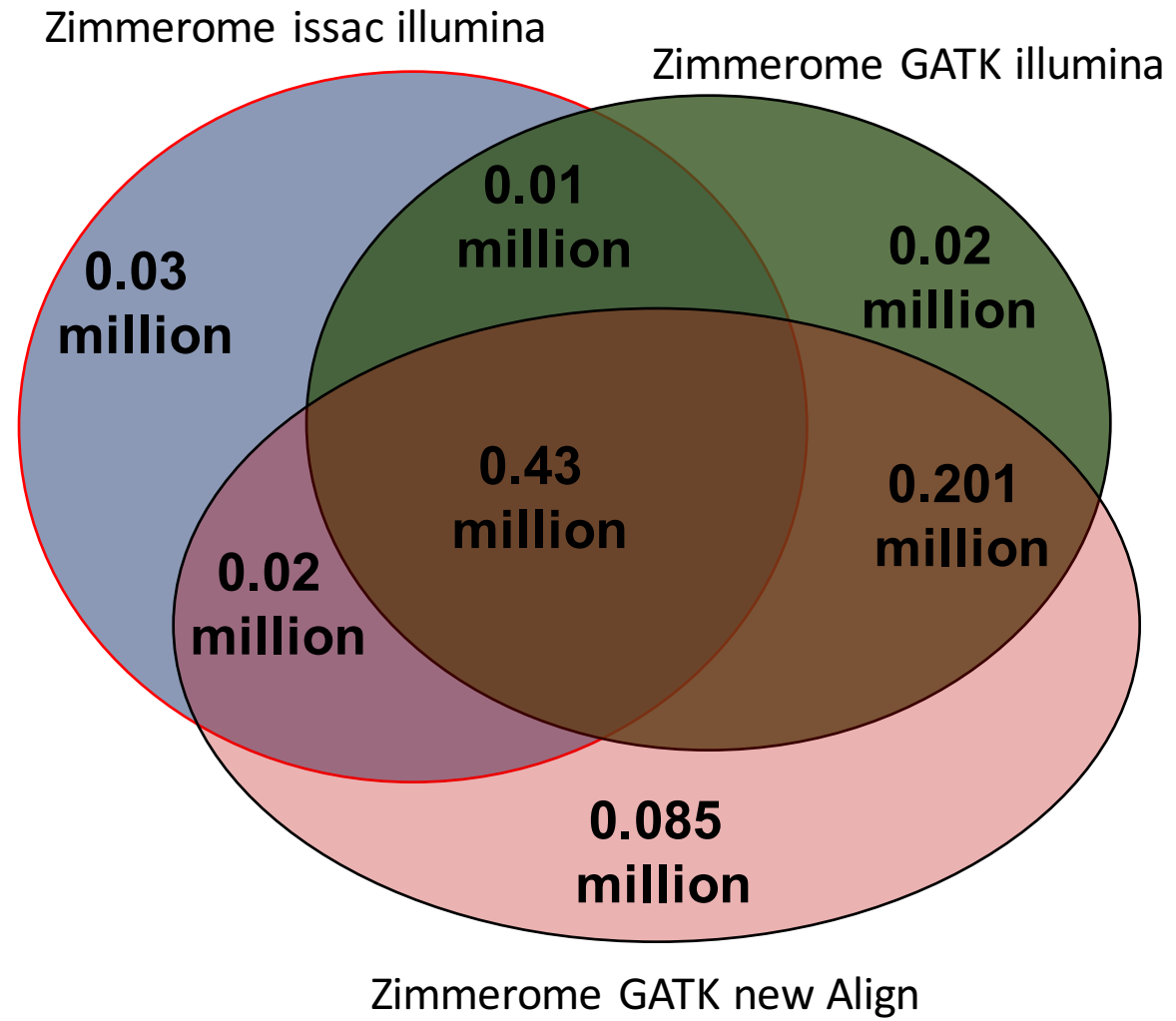


Pipeline to generate variants for personal genome analysis

Comparison of calls for zimmerome w/o post filtering

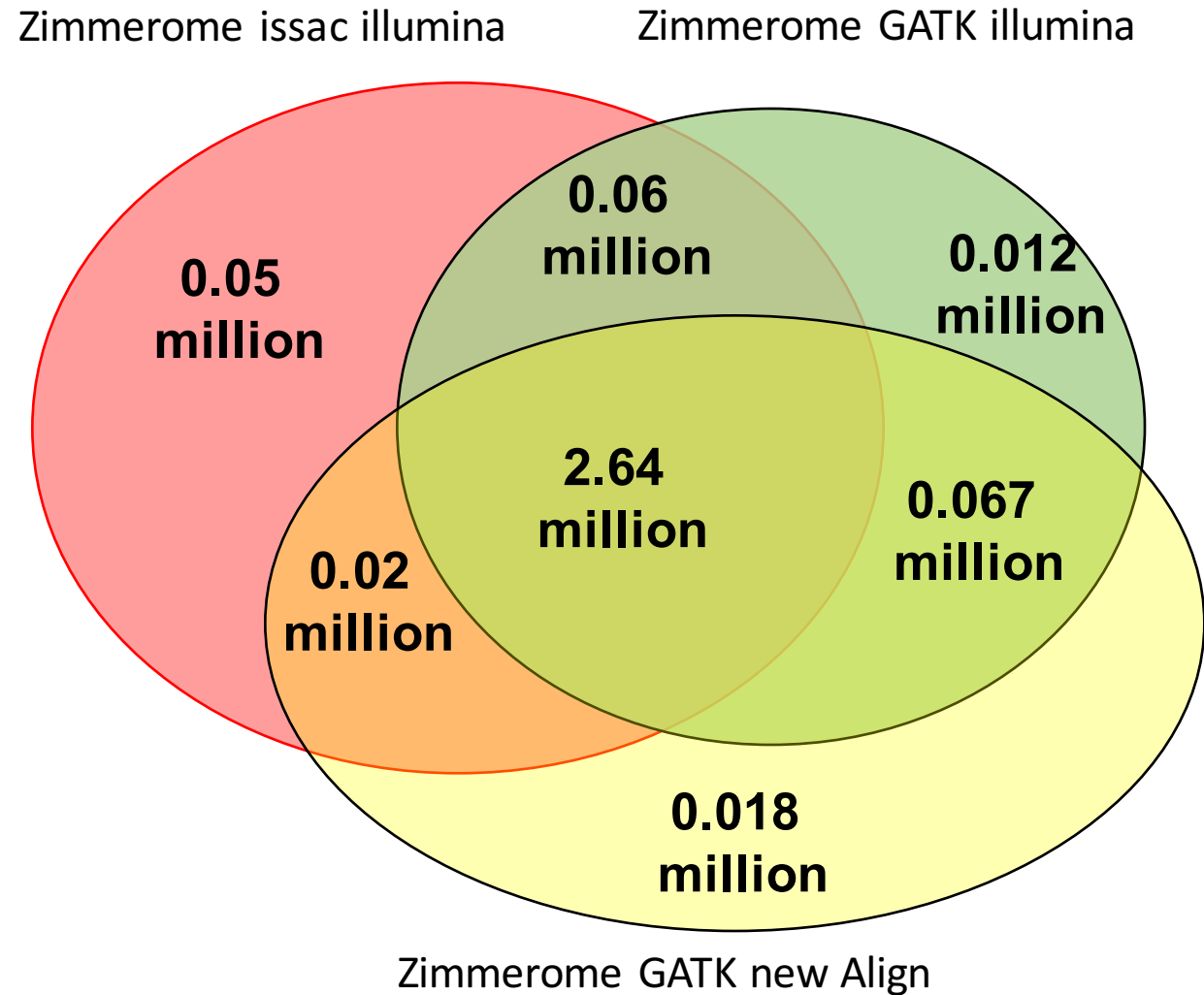


SNPs

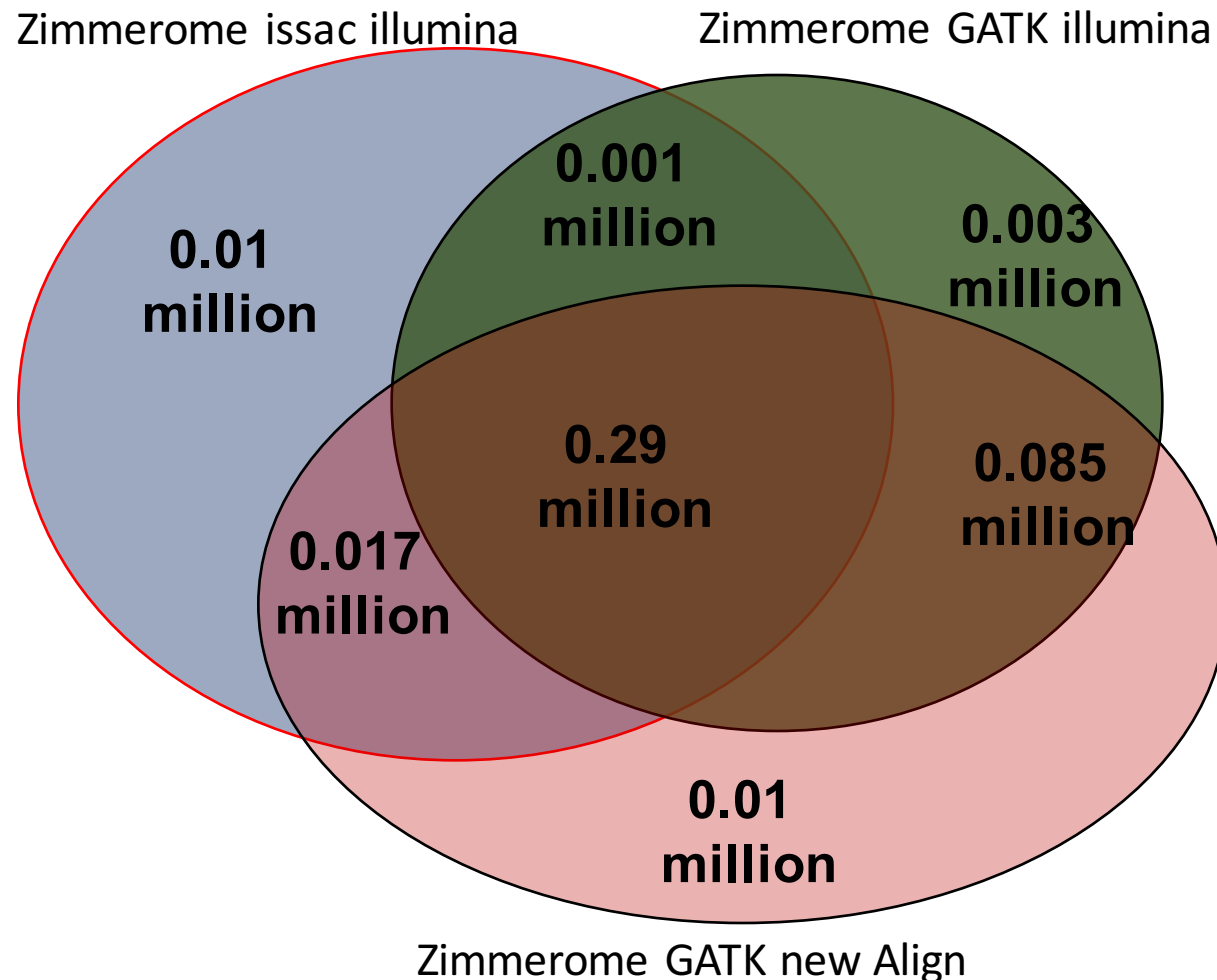


INDELs

Comparison of calls for zimmerome after filtering

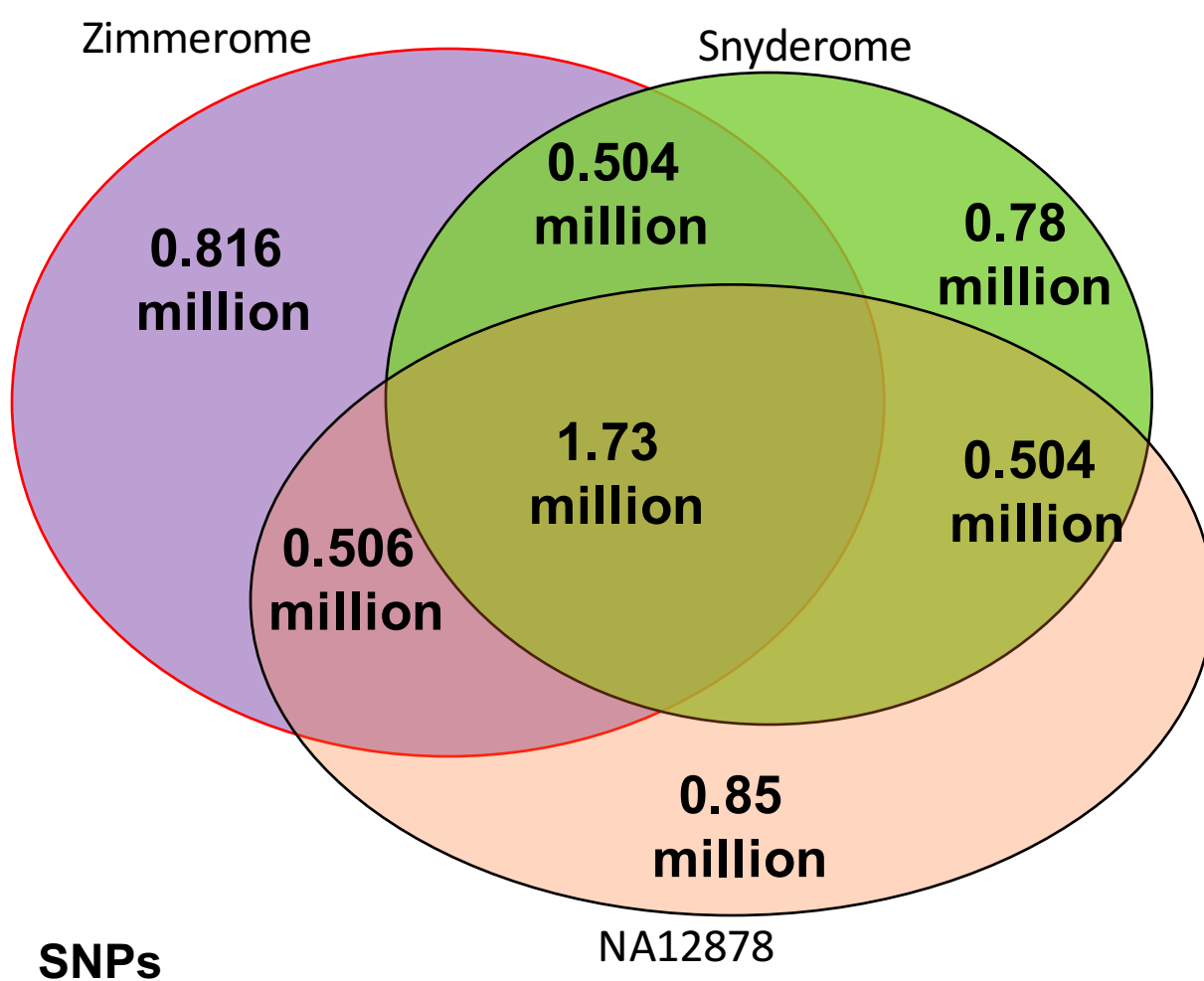


SNPs

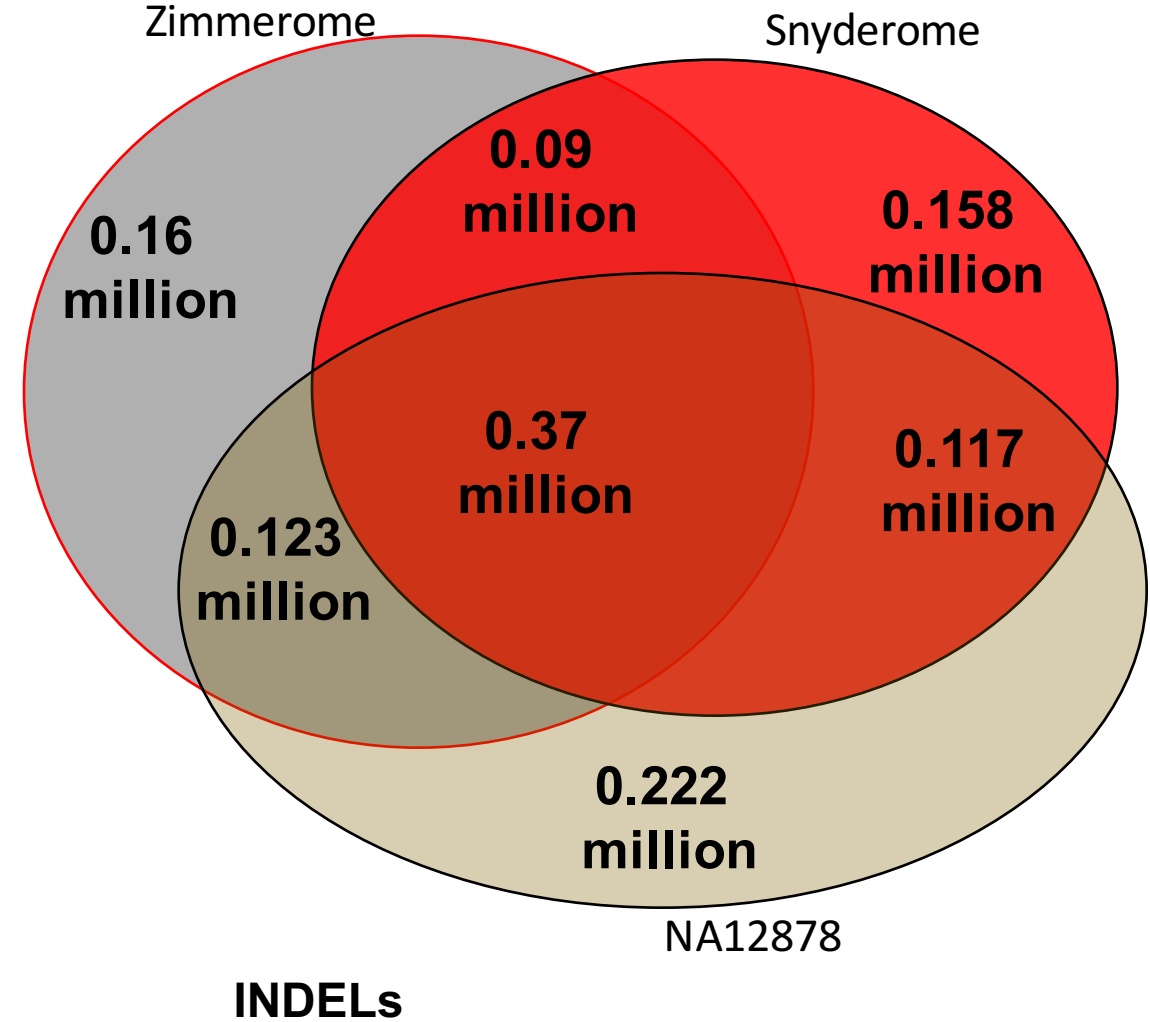


INDELS

Comparison of calls across three genomes w/o post filtering

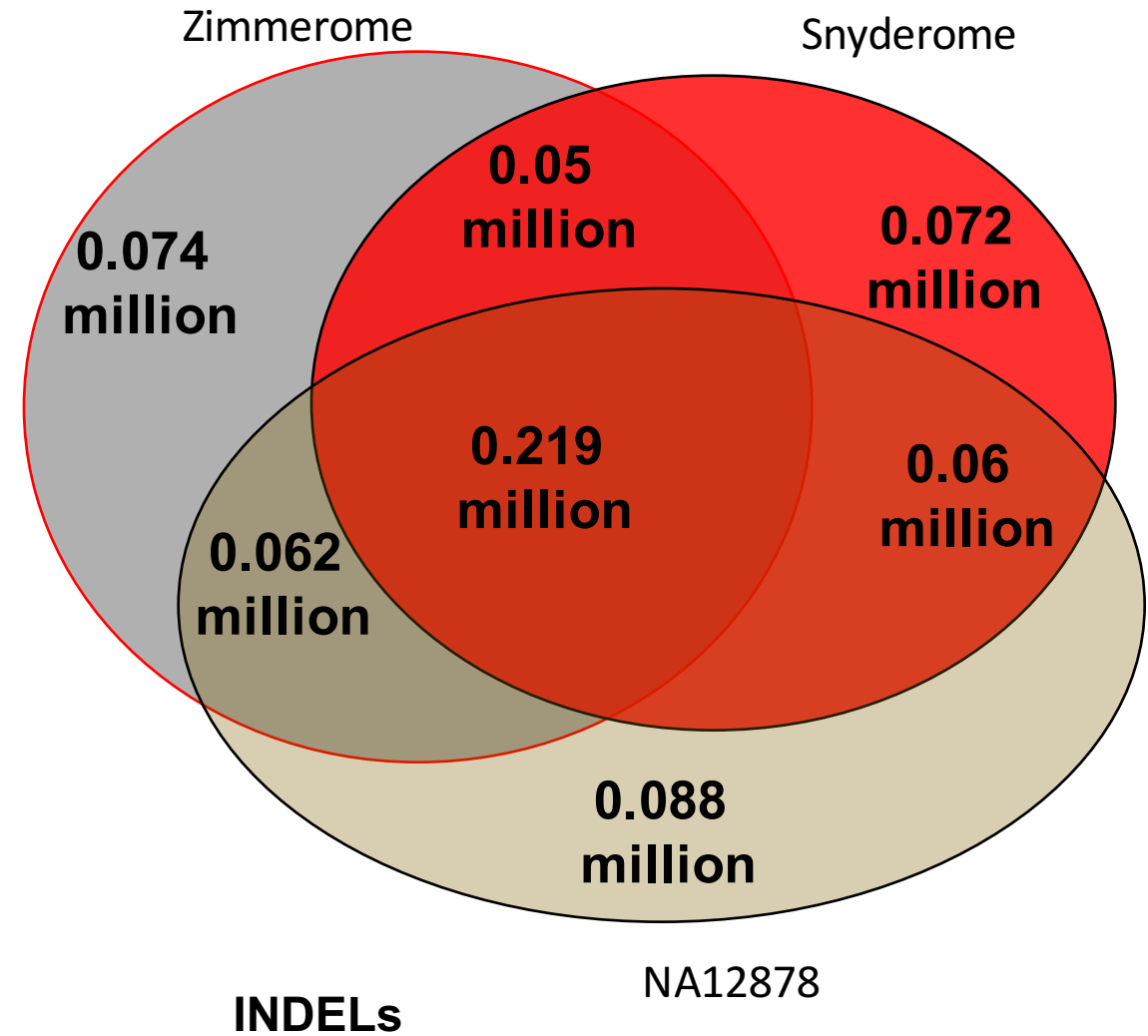
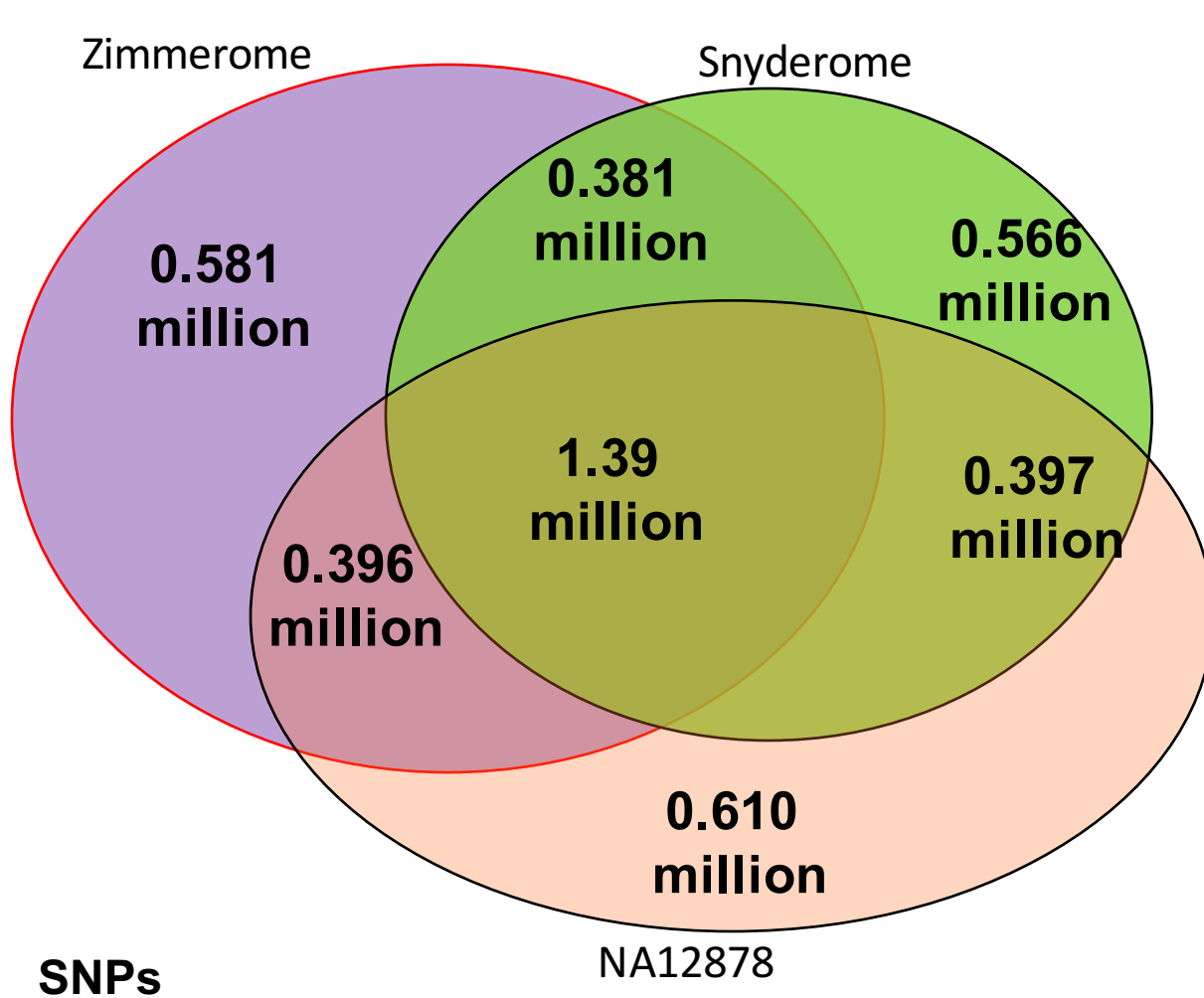


SNPs

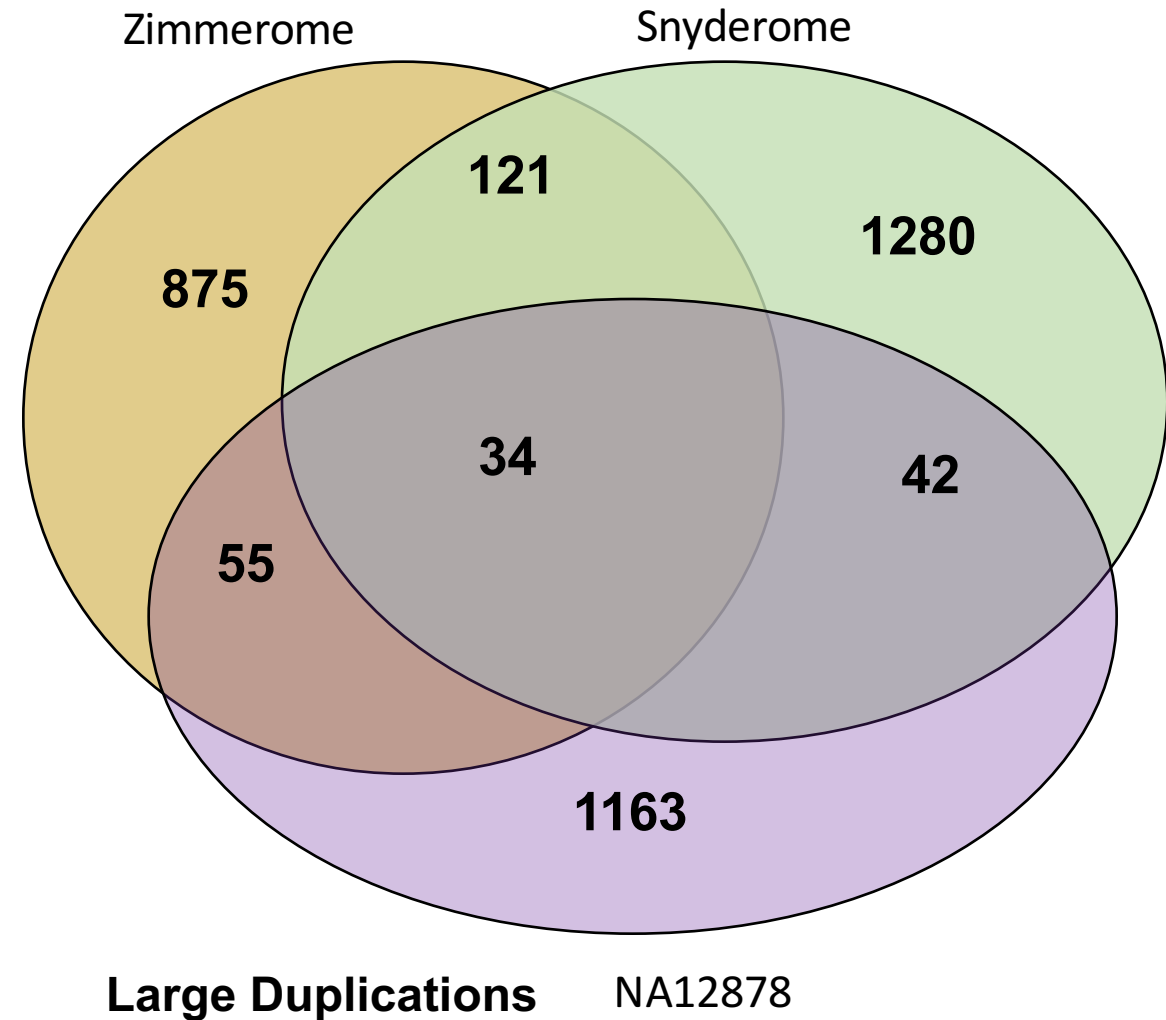
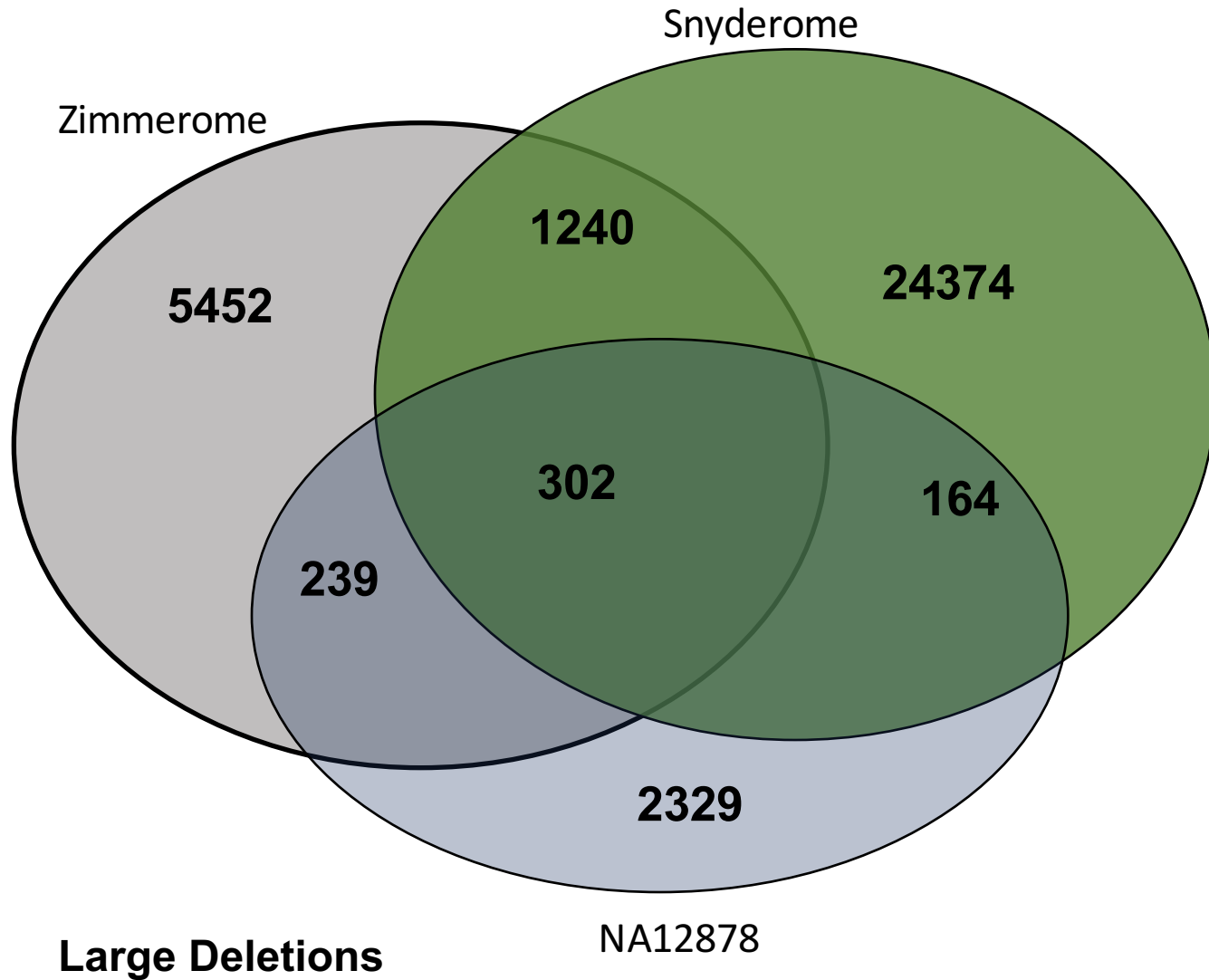


INDELs

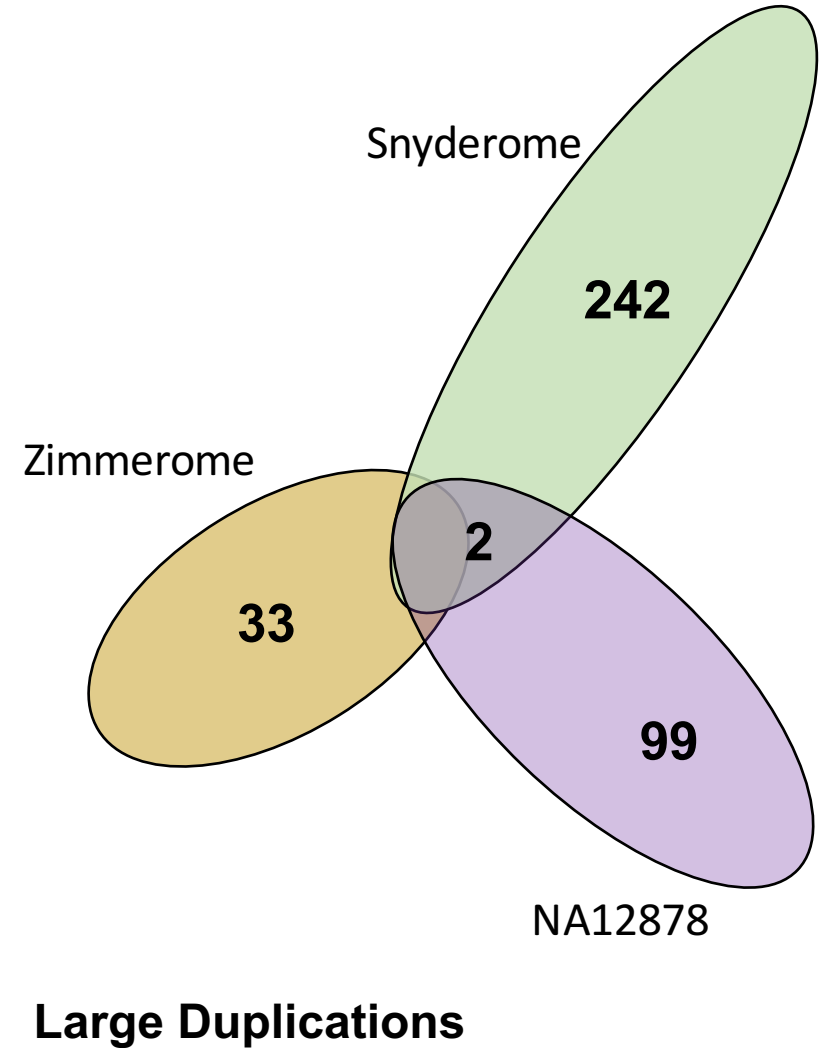
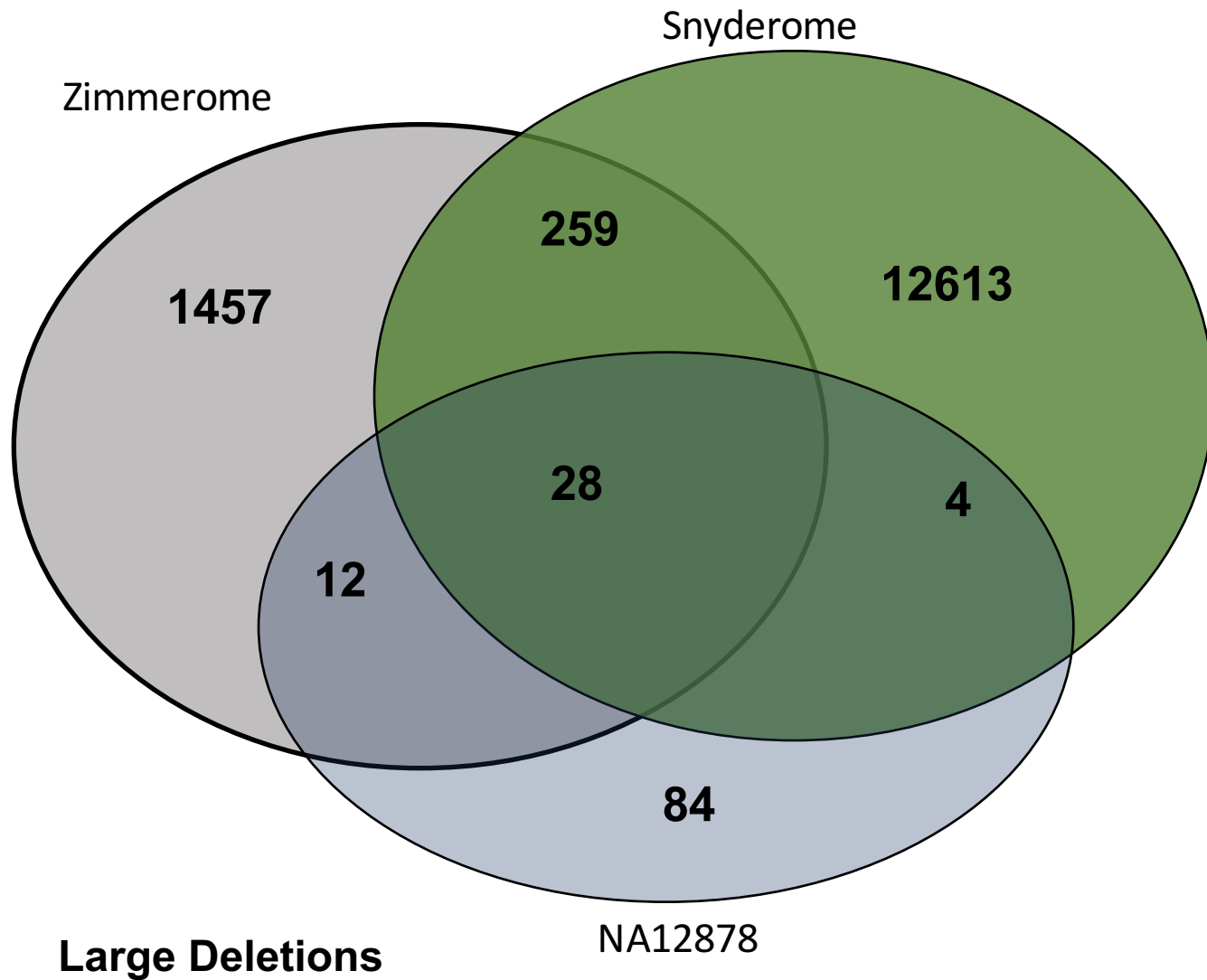
Comparison of calls across three genomes post filtering



Comparison of calls across three genomes w/o post filtering

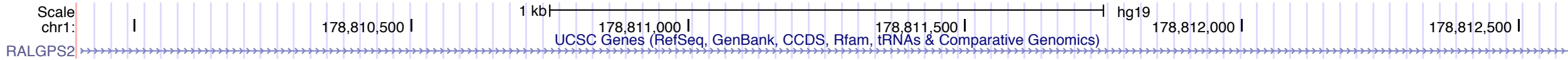


Comparison of calls across three genomes post filtering



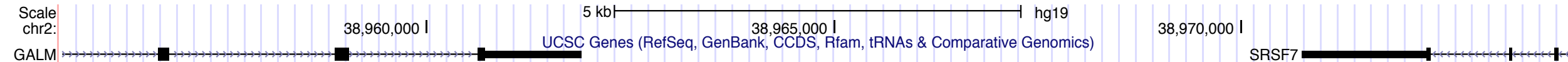
Specific examples of Duplications overlapping with various genes

Chr1: 178809901- 178812600 , SVLEN = 2.7kb



RALGPS2 gene is potential candidate gene for susceptibility to Alzheimer disease

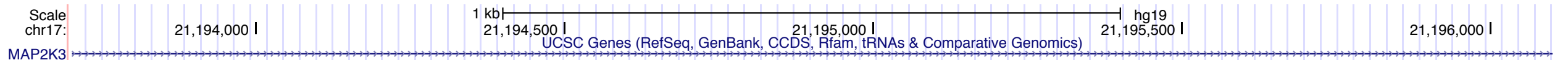
Chr2: 38955501- 38974100 , SVLEN = 18.6Kb



GALM : Creativity in music was found to co-segregate with a duplication covering glucose mutarotase gene

SRSF7 : associated with Allergic Bronchopulmonary Aspergillosis

Chr17: 21193701-21196100 , SVLEN = 2.4Kb



Duplication in chromosome 17p11.2 associated with Potocki-Lupski syndrome