

Retrocopies

Mus/Car/Pah/Rat

build 1509 - Jan 2016

Retrocopies

(processed pseudogenes + retrogenes)

	Musculus	Caroli	Pahari	Rat
Retrocopies 1509 vs 1504	8494 (8395)	7794 (7580)	7287 (6831)	11002
Parental genes	2541	2574	2503	2761
Identity (sd)	0.9294 (0.044)	0.9279 (0.041)	0.9239 (0.037)	0.9204 (0.044)
Median Length	815	828	808	672

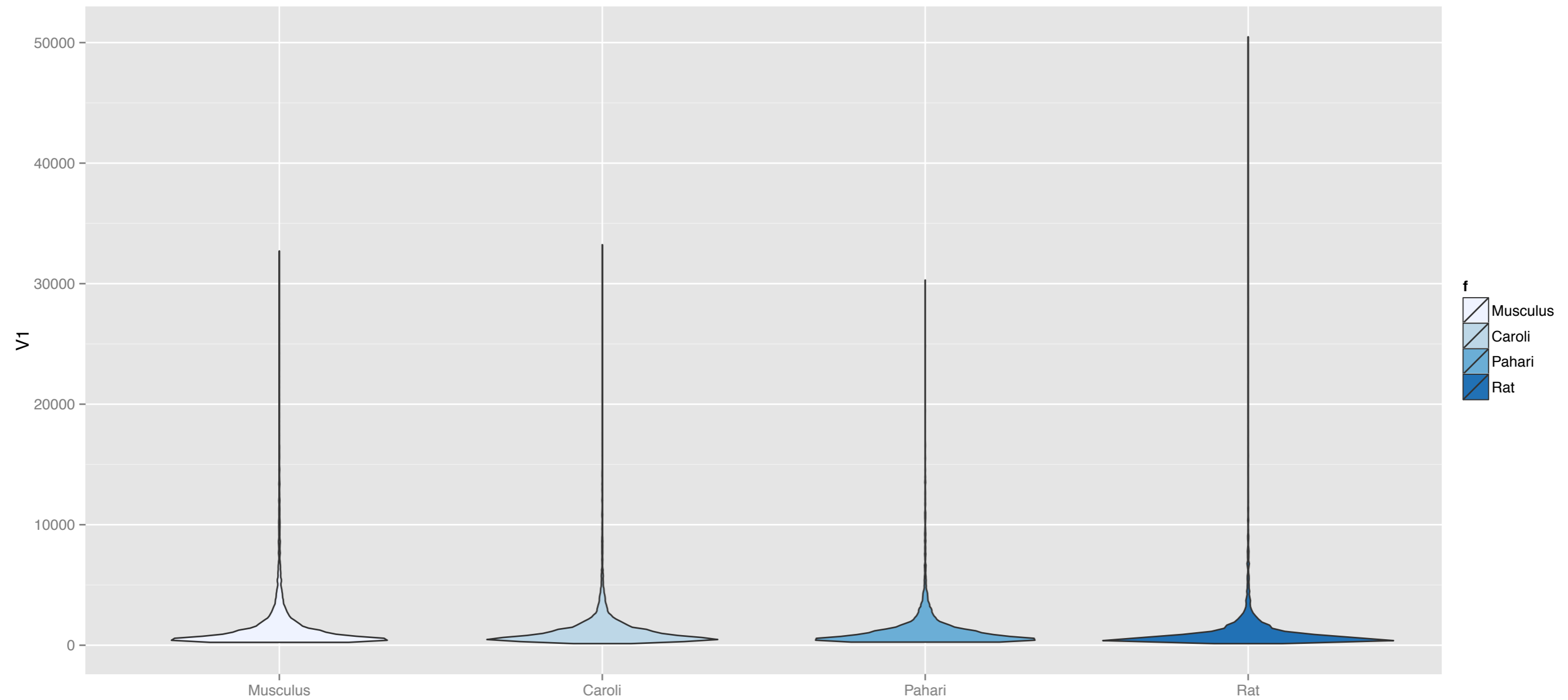
Parental genes

C57B6NJ	Caroli	Pahari	Rat
322 Gapdh	295 Gapdh	273 Gapdh	319 Gapdh
186 Rpl7a	177 Rpl7a	156 Hmgb1	289 Rpl7a
146 Hmgb1	131 Hmgb1	153 Rpl7a	197 Rpl21
138 Rpl29	124 Rpl29	127 Dnajc2	166 Rpl19

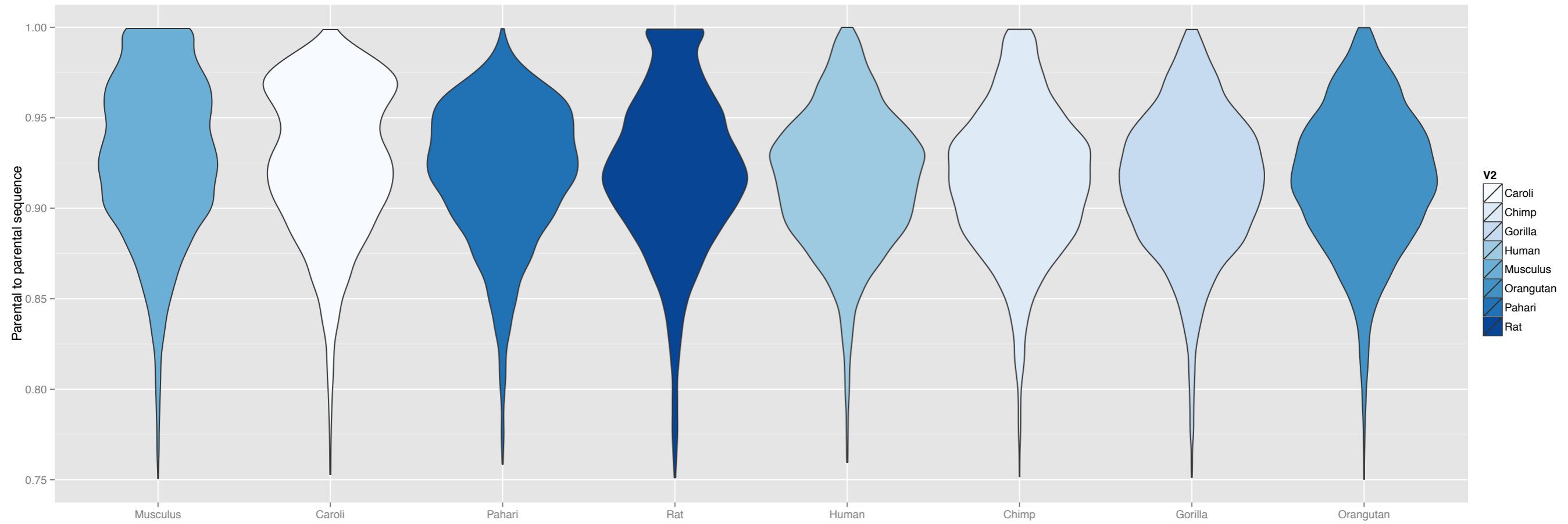
Artifact? Or strain specific (retro)duplications?



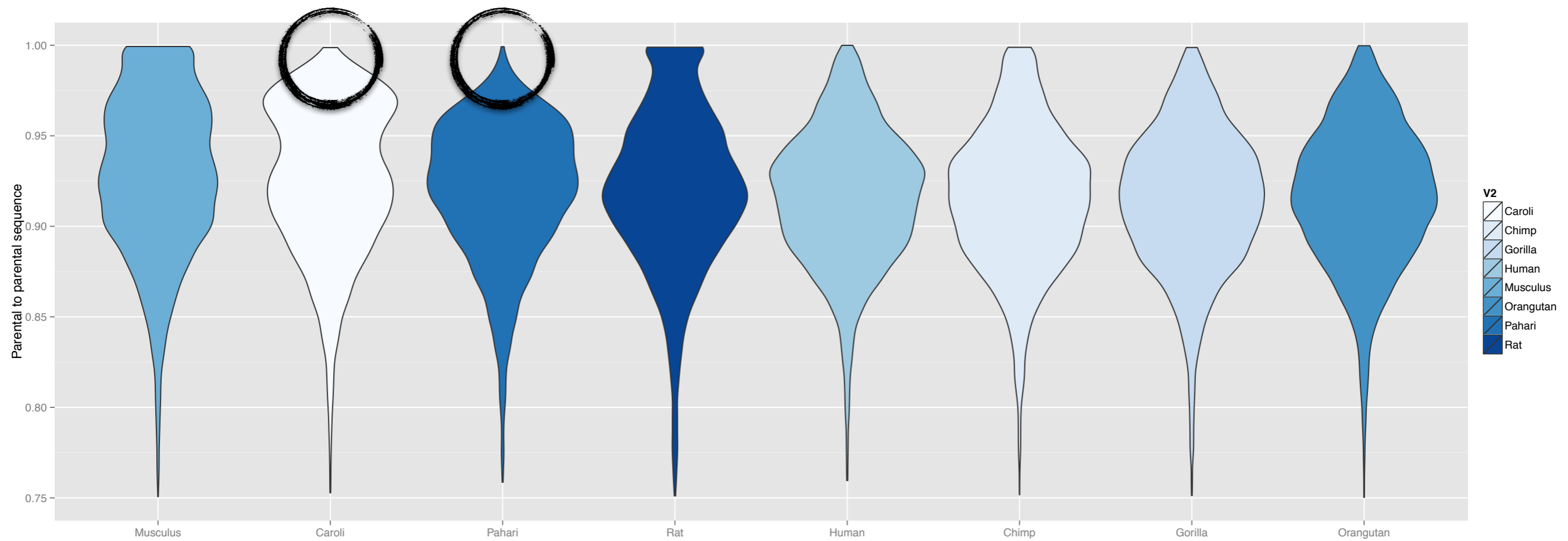
Retrocopy Identity



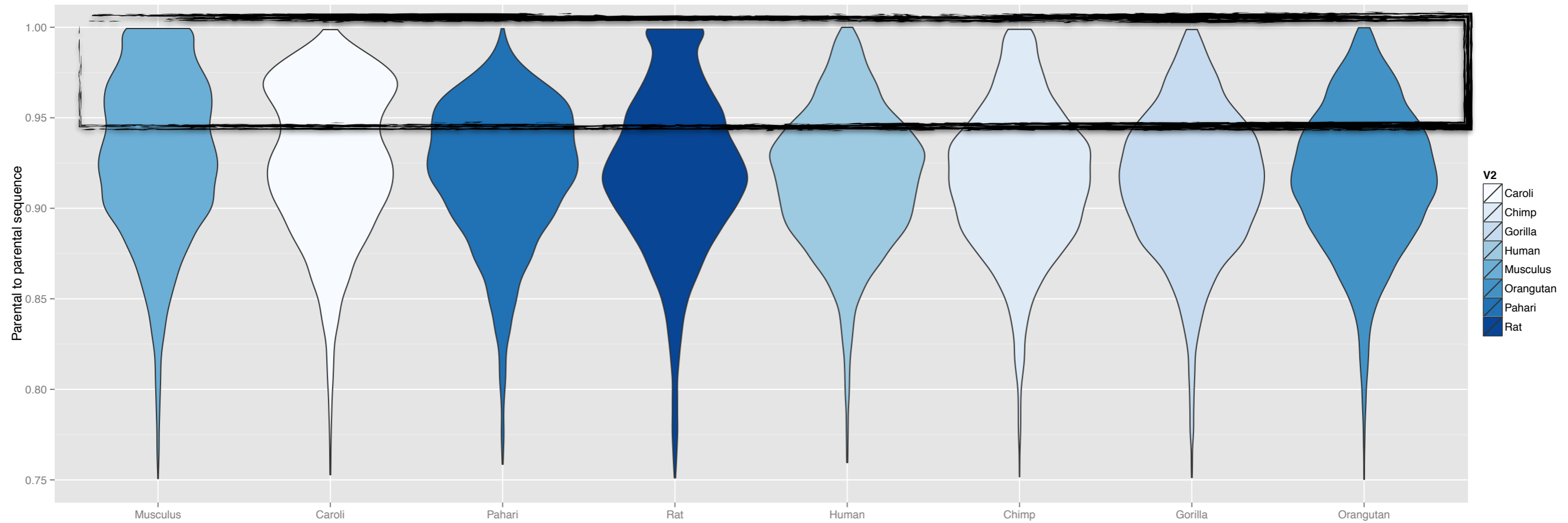
Retrocopy Identity



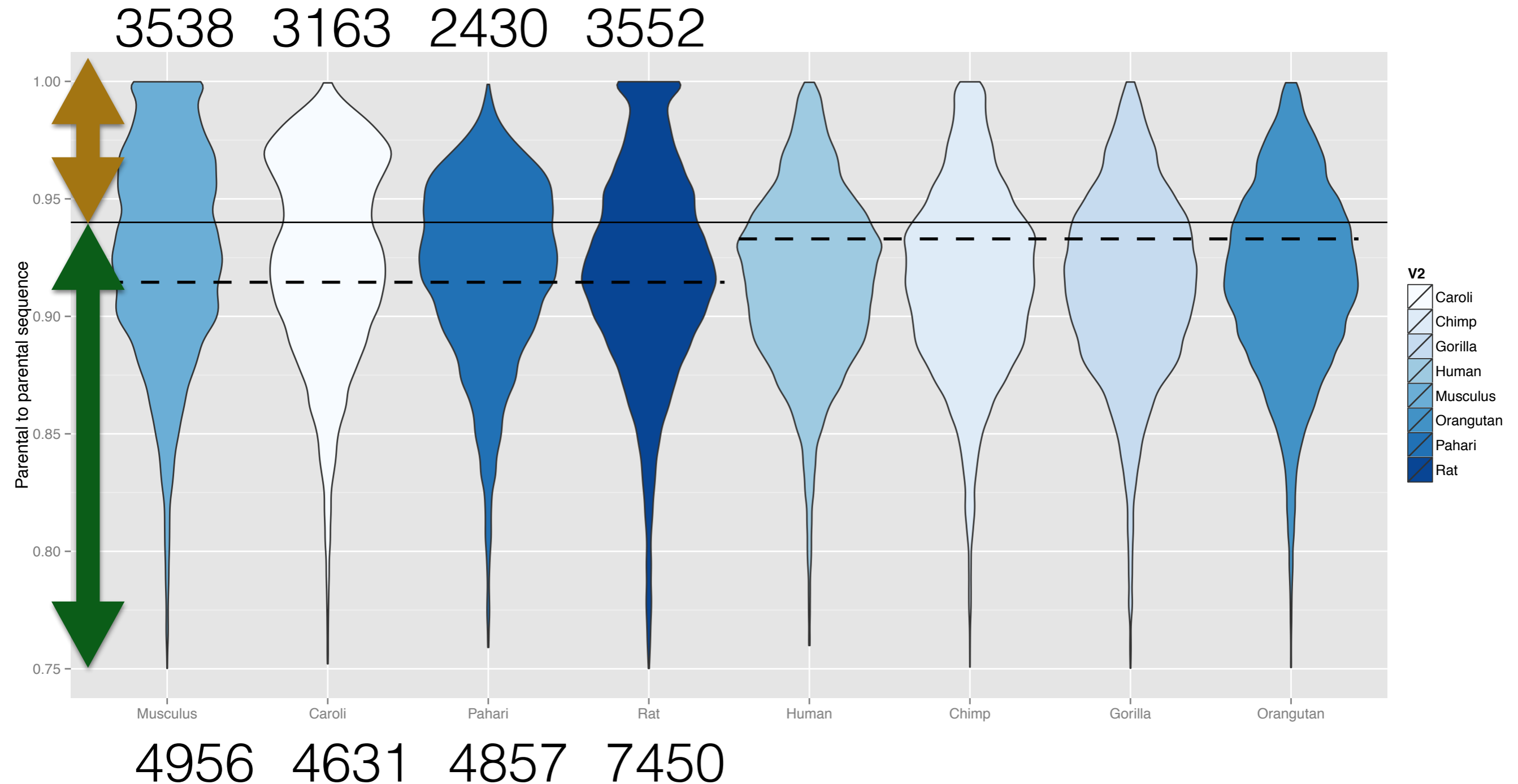
Retrocopy Identity



Retrocopy Identity

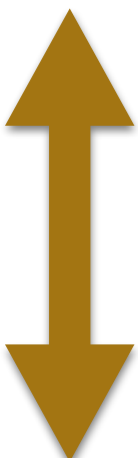


Retrocopy Identity




Retrocopy Identity

0.94

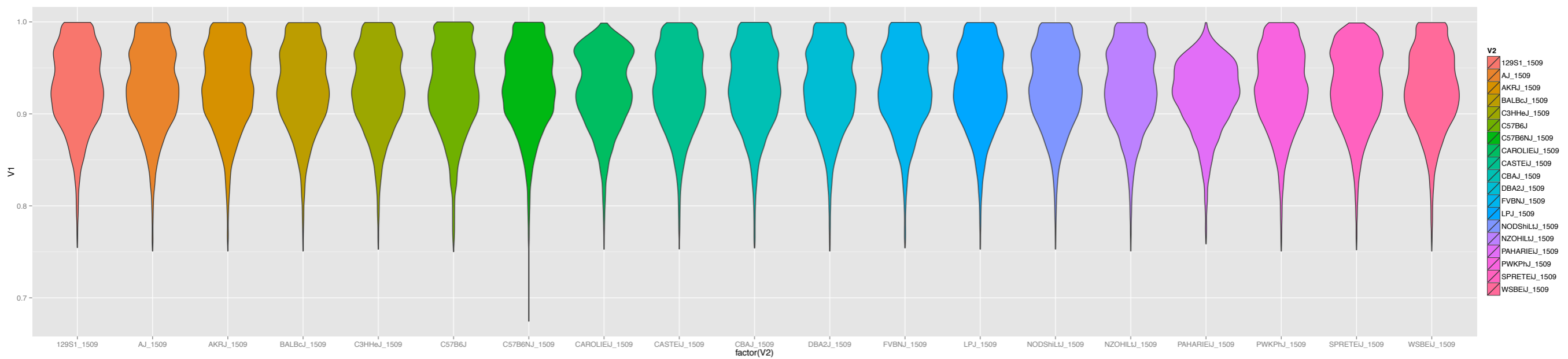


Musculus	Caroli	Pahari	Rat
99 Gapdh	94 Hmgb1	126 Hmgb1	162 Rpl7a
93 Hmgb1	74 Gapdh	112 Dnajc2	130 Gapdh
67 Rpl21	62 Rpl21	41 Gapdh	110 Rpl21
56 Rpl29	47 Rpl17	28 Rps2	52 Rpl35a

Musculus	Caroli	Pahari	Rat
223 Gapdh	221 Gapdh	232 Gapdh	189 Gapdh
131 Rpl7a	132 Rpl7a	127 Rpl7a	158 Rpl19
83 Rps2	78 Rpl29	81 Rpl29	130 Rpl29
82 Rpl29	72 Rps2	80 Rps2	127 Rpl7a



Retrocopy Identity



Acknowledgments

- Cristina Sisu
- Mark Gerstein