

## Analysis of deletion breakpoints from 1,092 humans reveals details of mutation mechanisms

Alexej Abyzov, Shantao Li, Daniel Rhee Kim, Adrian Stuetz, Xinmeng Jasmine Mu, Wyatt Clark, Arif Harmanci, Ken Chen, Matthew Hurles, Jan Korbel, Charles Lee, Mark Gerstein

### Abstract

Structural variants (SVs) affect more bases in the human genome than those arising from point mutations (i.e. SNPs). While entire SVs can be thousands of bases in length, only a few bases around their breakpoints hold the most crucial information about their mechanisms of formation, which mostly fall into three broad classes: non-allelic homologous recombination (NAHR), transposable-element insertion, and non-homologous (NH) mechanisms. Here we identify, classify, and analyze 8,943 breakpoints associated with deletions in 1,092 samples sequenced by the 1000 Genomes Project. We make this dataset available as a public resource, representing the largest breakpoint collection to date. Overall, breakpoints have more nearby SNPs (and indels) than the genomic average. This effect occurs over a large (megabase) scale, and is likely explained by relaxed selection acting on breakpoint regions, since it is correlated with reduced cross-species conservation. NAHR breakpoints exhibit a distinct SNP aggregation profile, explained by the higher frequency of nearby CpG dinucleotides and local methylation patterns. Moreover, by correlating them with methylation, Hi-C data, and histone marks, we find that they are associated with open chromatin. We hypothesize that since replication is largely devoid of chromatin structure, some of the NAHR deletions occur without DNA replication and cell division, in embryonic and germline cells, and then are passed on to the offspring. We do not find any associated correlations with NH breakpoints. However, we do find that they are often coupled with micro-insertions. We identified template sites for over one hundred of such insertions. Surprisingly, these are located at two characteristic distances from the breakpoint and tend to be replicated later. These findings are consistent with a template switching mechanism, suggesting particular spatial and temporal configurations for DNA during some NH events.

Alexej Abyzov 1/4/2015 11:03 PM

Deleted: SV

Shantao 1/8/2015 4:35 PM

Deleted: occurrence of

Shantao 1/8/2015 4:35 PM

Deleted: s, which, in turn, are linked with

Shantao 1/8/2015 4:39 PM

**Comment [1]:** 1. Higher CpGs are caused by gene conversion, not methylation  
2. Our conclusion is C>T can be explained by higher CpGs frequency + hypomethylation

ALSO  
NEARBY

2

## Introduction

Genome structural variations involving hundreds and thousands of bases are common during evolution and are widespread in the human genome<sup>1,2</sup>. The ~~comparably~~ larger fraction of the human genome affected by SVs than SNPs<sup>3</sup> implies they may have greater, or at least similar, consequences for phenotypic variation and evolution ~~as~~ SNPs<sup>1,2</sup>. Not surprisingly, SVs can cause and have been associated with numerous diseases<sup>4-10</sup>. ~~THAN~~

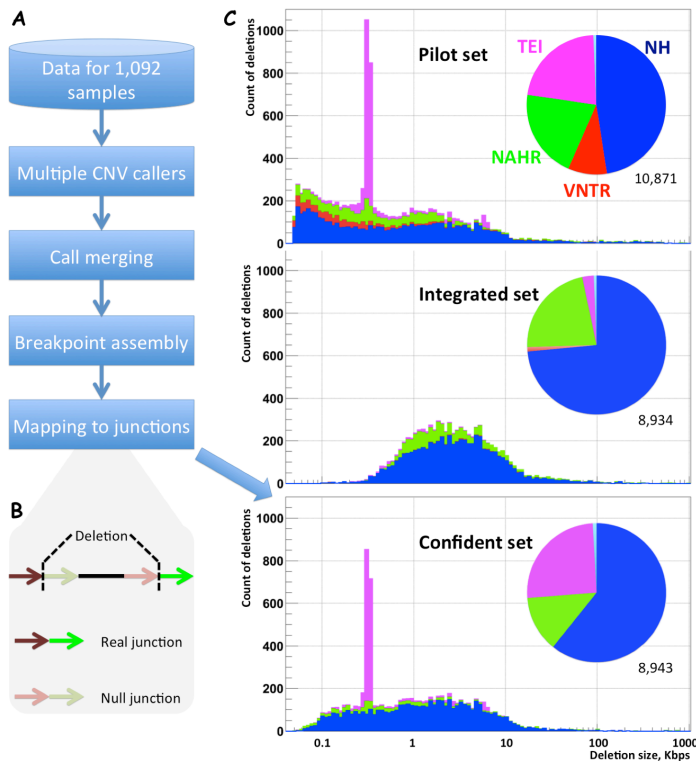
SV occurrence and existence is a complex phenomenon that is not completely understood. SVs, ~~as~~ ~~other~~ ~~variants~~, are genetic imprints of mutational processes in cells. The sequence content of SVs can carry important information about their origin, but bases around their breakpoints hold the most crucial details of SV genesis. Long homologies around breakpoints suggest SV formation by non-allelic homologous recombination (NAHR), short homologies with high mobile element content within SV regions suggest they originated through transposable element insertions (TEI), while little or no homology (NH) at breakpoints indicates that an SV originated as a result of a non-homologous end-joining (NHEJ)<sup>11</sup> events or by a template-switching mechanisms during replication. The latter mechanisms include fork stalling and template switching (FoSTeS)<sup>12</sup> and microhomology-mediated break-induced replication (MMBIR)<sup>13</sup>. Mistakes in breakpoint resolution of just several bases can lead to misclassification of mutational signatures and compromise downstream analysis. Thus, studying SVs at breakpoint resolution is fundamental to understanding the mutational mechanisms generating them. ~~Like~~

~~GENOME~~ ~~A~~ Few systematic genome wide studies of SV breakpoints have been carried out to date<sup>14-17</sup>. In particular, studies by Lam et al.<sup>14</sup>, Conrad et al.<sup>16</sup>, and Kidd et al.<sup>15</sup>, analyzed 1,961, 324, and 1,054 SV breakpoints in 14, 3, and 17 individuals respectively. The majority of SVs analyzed in those studies were larger than 1 kbps. Analysis of genomes from 180 individuals in the pilot phase of the 1000 Genomes Project<sup>17</sup> revealed that there are at least an order of magnitude more SVs present in the human population, a significant fraction, if not most, of which are smaller than 1 kbps. The challenge of precise breakpoint identification from inexpensive short-read sequencing was also realized<sup>18</sup>.

Along with advances in breakpoint ascertainment, recent multiple studies aimed at deciphering genome function have been conducted that have generated a wealth of functional genomic data. For example, the ENCODE project<sup>19</sup> and The NIH Roadmap Epigenomics Mapping Consortium<sup>20</sup> released data on chromatin marks, methylation, DNase hypersensitive sites, and transcription binding sites in multiple cell lineages and tissues. ~~A~~ These data allow the study of SV breakpoints in the context of genome functional and epigenetic contents. Here we describe the discovery and analysis of a large set of 8,943 high confidence deletion breakpoints from 1,092 individuals sequenced in phase 1 of the 1000 Genomes Project<sup>21</sup>. We put special emphasis on the derivation of our set of high precision breakpoints and provide this dataset as a valuable resource for others. Our subsequent downstream analysis, including correlating breakpoints with functional genomic data, reveals important details of their mechanisms of formation and the genomic characteristics associated with them.

## Results

### Deriving the confident set of breakpoints



**Figure 1.** Deriving confident set of breakpoints. A) Conceptual steps for the derivation. Breakpoints from local target assembly are filtered by mapping reads to putative junctions. B) Null model for breakpoint filtering. C) Comparison of different breakpoint sets. The pilot set<sup>17</sup> was included in the derivation as one of the call sets. Integrated set<sup>21</sup> was biased toward large non-repetitive deletions for the purpose of reliable genotyping, resulting in the strong underrepresentation of mobile element insertions. The overlap between confident set and pilot/integrated sets was roughly 50% (Fig. S3).

individuals with and without deletions – Intensity Rank Sum (IRS) test<sup>17</sup> (see **Methods**). The final set consisted of 8,943 deletion breakpoints with consistent FDR estimates from PCR (6.8%) and IRS (6.4%) validations for deletion existence, and 13.7% for deletion presence with precise breakpoints from PCR. Precision was confounded by repeats around breakpoints. Typically, we observed shift between breakpoint coordinates from assembly and validation, but in one case we observed that assembly collapsed repeats (Fig. S1). Using read depth approach, we genotyped 4,384 variants from the set as deletions in two trios sequenced to high coverage by long reads. Using these data as supporting evidence, we confirmed 3,034 breakpoint sequences (34% of entire set) and, after minimizing confounding factor, calculated yet another FDR estimate of 18% for deletion presence with precise of breakpoints (Table S1 and **Methods**).

As expected, we find exponentially more of less frequent deletions, with roughly 54% genotyped in less than 2% of studied individuals (Fig. S2). Using OMNI genotyping arrays we estimated that our

We performed comprehensive discovery of deletions<sup>21</sup>, targeted breakpoint assembly<sup>22</sup>, and breakpoint mapping with two pipelines<sup>22,23</sup> to arrive at a candidate set of breakpoints (Fig. 1A). To derive high quality dataset we needed to address two types of errors: false deletion calls and incorrect breakpoint assembly. Consequently, we developed a dedicated filter that utilized unmapped reads and an empirical null model (Fig. 1B). Briefly, the model used inner sequences adjacent to deletion breakpoints to construct junctions simulating random sequences, i.e., null sequence junctions. Note that this model imitates biologically relevant sequence homologies around breakpoints. We realigned unmapped reads to real and null junctions and optimized the criteria for considering whether a read supports a junction by interrogating alignments to null junctions, as such alignments reflect random noise (see **Methods**).

For validation we performed PCR amplification across breakpoints and tested for differences in intensity values for SNP probes across

Alexej Abyzov 12/1/2014 11:33 PM  
Deleted: , stringent filtering

Alexej Abyzov 12/1/2014 11:33 PM  
Deleted: , and experimental validation (see **Methods**)

Alexej Abyzov 12/1/2014 11:34 PM  
Deleted: As a filtering step

Alexej Abyzov 12/1/2014 3:08 PM  
Deleted: Note: t

Alexej Abyzov 12/1/2014 7:50 PM  
Deleted: correct

Alexej Abyzov 12/1/2014 7:40 PM  
Deleted: A limited subset of

Alexej Abyzov 12/1/2014 7:27 PM  
Deleted: breakpoints was tested on OMNI SNP genotyping array and/or could exist

Alexej Abyzov 12/1/2014 7:41 PM  
Deleted: We u

Alexej Abyzov 12/1/2014 7:41 PM  
Deleted: ed

Alexej Abyzov 12/1/2014 7:27 PM  
Deleted: two additional

Alexej Abyzov 12/1/2014 7:27 PM  
Deleted: sources

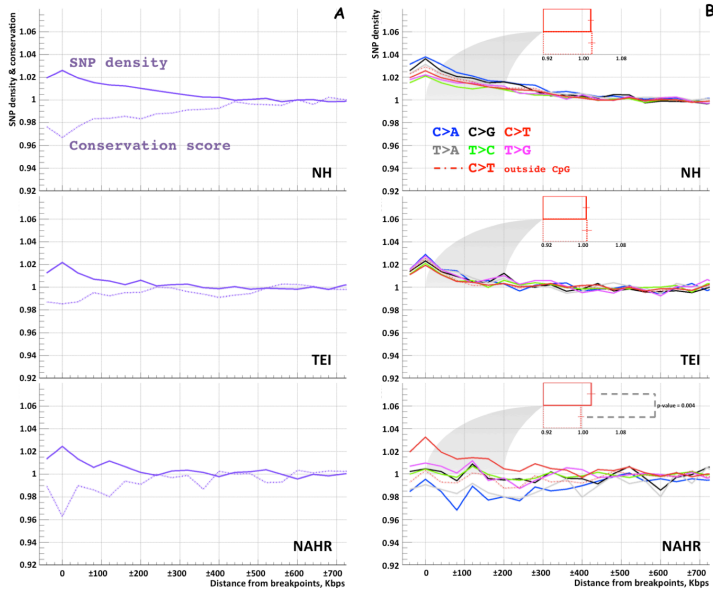
Alexej Abyzov 12/1/2014 7:45 PM  
Deleted: , and

Alexej Abyzov 12/1/2014 7:27 PM  
Deleted: 28% of the breakpoint sequences with the array, and 39% of

Alexej Abyzov 12/1/2014 7:32 PM  
Deleted: in the two trios

WITH

breakpoint genotyping while being very precise misses roughly 60% of samples; the results of shallow 4-8X sequencing. Additionally, due to stringent criteria for breakpoint support, breakpoints of rare deletions are less likely to be confirmed by read mapping. As a consequence, frequency spectrum of deletions in the set was shifted toward more common events as compared to the SNP set discovered from the same data (Fig. S2).



**Figure 2.** Co-aggregation of SNPs with deletion breakpoints found in the analyzed samples. A) Normalized by nucleotide frequency and background SNP densities increased while conservation decreased in 400 kbp regions around breakpoints of each class. B) Densities increase for substitutions of all types around NH and TEI breakpoints but this is not the case for NAHR breakpoints. Increase of C to T substitutions around NAHR breakpoints is driven by SNPs in CpG motifs as evident from red bars. Furthermore, this is solely due to enrichment of CpG motifs (Fig. S5). This is consistent with common knowledge that NAHR events are associated with sites of recombination.

1 kbp.

We further classified the deletions by their likely mechanism of origin using sequence signatures at breakpoints from the following classes<sup>14</sup>: non-allelic homologous recombination (NAHR), transposable element insertions (TEI), and non-homologous (NH) events. Note that our set does contain bona fide insertions relative to ancestral state, such as transposable elements<sup>14</sup>. In particular, majority of the TEIs are insertions of Alu elements. The final set consisted of 13% NAHR, 25% TEIs, and 61% NH deletions. Large fraction of NH deletions (58%) had evidence of being generated through template-switching mechanisms, i.e., contained at least 2 bp identity around breakpoints or MI longer than 10. The remaining NH deletions are likely to arise through NHEJ. MI of one deletion (chr1:200,258,970-200,259,149) consisted of the sequence of 3'-end of Alu element and 21 bp long poly-A tail, thus, is likely templated from RNA of Alu element<sup>26</sup>. We also identified a deletion (chr17:1654955-1655422) generated with

Overall, ~~these~~ <sup>OUR 7.</sup> breakpoints are of higher quality than those derived in the pilot phase of the 1000 Genomes Project<sup>17</sup> (Fig. S3) and are more representative in their length distribution than those used recently in the following phase<sup>21</sup> (Fig. 1C), as the latter set was limited to large non-repetitive events that could be well-genotyped across the analyzed populations. A large fraction of the dataset, 3,739 (42%), were deletions of at least a thousand bases in length. This ~~was~~ <sup>SV</sup> also significantly larger than those analyzed previously<sup>14-16,24,25</sup> (Table S2). Despite that the set from Venter's genome<sup>24,25</sup> contained almost 800,000 non SNP genomic variants, only 1,516 had 50% reciprocal overlap with deletions in our set. This is because Venter's set was biased towards indels, with breakpoints resolved for less than 7 thousand of SVs larger than 100 bp, and for less than a thousand of SVs larger than

Alexej Abyzov 12/2/2014 11:32 AM  
Deleted: (Fig. 1C)

Alexej Abyzov 1/4/2015 2:01 AM  
Deleted: S2

Alexej Abyzov 1/4/2015 1:41 AM  
Comment [2]: Intersection with genes and CDSs.

PIPELINE

HAZY

2

breakpoint signature of recombination across right arms of two oppositely oriented *Alus*<sup>27</sup>. Overall, deletions in this set were generated through variety of mutational mechanisms.

We provide this dataset as a public resource (Table S1 and <http://sv.gersteinlab.org/phase1bkpts>) with complete information about breakpoint coordinates, mechanism classification, and, if applicable, the sequence of micro-insertions (MI) at the breakpoint. The resource can be used in various study settings including SV genotyping by mapping reads to breakpoint sequences. XXX

### Variant co-aggregation with deletion breakpoints

To analyze the association of variants with deletion breakpoints, we aggregated SNPs and indels found in the same group of individuals around breakpoints. To reduce the contamination of our analysis with false positive calls, we only used variants that reside in confident sites as defined by the mask of the 1000 Genomes Project<sup>21</sup> and calculated densities with respect to the number of such sites. Normalized densities (see Methods) of both SNPs and indels increased in the 400 kbp regions around breakpoints of each class (Fig. 2A and S4). One might suggest that false SNP calls as a result of read mis-mapping around breakpoints could cause the observed increase, as reads spanning the SV junctions are often misaligned. However, the increases have a scale that is large relative to the 450-650 bp insert size of sequencing libraries and, therefore, cannot be artificial. Analysis of sequence conservation around breakpoints revealed that these increases could likely be explained by the co-occurrence of different variants in genomic regions under reduced selection. This is evident by the aggregated conservation score decreasing around breakpoints in conjunction with an increase in SNP densities. (eg C→A or G→T)

Aside from overall SNP density, the densities of all individual substitution types also increase close to NH and TEI breakpoints (Table S3). However, this is not the case for NAHR breakpoints, for which C to A and T to A are depleted while C to T substitutions are enriched (Fig. 2B; Table S3). We hypothesized that the observed differences in SNP aggregation can be explained by the sequence and motif content around breakpoints of each class and/or different selection pressure acting on substitutions of each type. Indeed, further analysis, performed by removing CpG di-nucleotides from consideration, revealed that the increase in C to T substitutions is due to the enrichment of the CpG motif exclusively around NAHR breakpoints, but not around NH or TEI breakpoints (Fig. 2B and S5). This is expected, as it is known, that the motif itself, C to T mutations within it, and NAHR breakpoints are all associated with recombination hot-spots<sup>28,29</sup>. Indeed, NAHR breakpoints in our set were strongly associated with higher recombination rates (enrichment of 1.4 with  $p$ -value  $< 10^{-3}$ ), while no significant association for breakpoints of other classes was observed (see Methods). However, unexpectedly, density of C to T substitutions in CpG motifs decreased close to NAHR breakpoints (Fig. S5). Since such substitutions are methylation-associated we directly tested for DNA methylation levels around breakpoints.

### Association of breakpoints with hypomethylation, chromatin states and active regions

DNA methylation levels from H1ESC line showed no change close to breakpoints of all classes (Fig. S6). We next searched for an association of breakpoints with hypomethylated regions in sperm as compared to H1ESC<sup>30</sup>. A strong association was observed for TEI and NAHR breakpoints (Fig. 3A). In particular, the TEI breakpoints were five times and NAHR breakpoints were over 50% more likely to reside in hypomethylated regions than expected by chance (both  $p$ -values  $< 2 \times 10^{-4}$ ). Demethylation of transposable elements in sperm has been known for a while<sup>31</sup>. Similar effect for NAHR deletions is consistent with the reduced C to T substitution densities in CpG regions around the deletions' breakpoints. This observation is not confounded by CpG islands, most of which are also constitutively unmethylated in sperm (Fig. S7).

Alexej Abyzov 12/29/2014 4:53 PM

Comment [3]: Nick to check

Alexej Abyzov 1/4/2015 1:44 AM

Comment [4]: Here some description from Hugo about genotyping with BreakSeq.

Alexej Abyzov 1/4/2015 1:50 AM

Deleted: S1

Alexej Abyzov 1/4/2015 1:50 AM

Deleted: S2

Alexej Abyzov 1/4/2015 1:50 AM

Deleted: S2

Alexej Abyzov 1/4/2015 1:51 AM

Deleted: S2

Alexej Abyzov 1/4/2015 1:55 AM

Deleted: S2

Alexej Abyzov 1/4/2015 1:56 AM

Deleted: S3

Shantao 1/8/2015 1:46 PM

Deleted: deleted regions

Alexej Abyzov 1/3/2015 12:55 AM

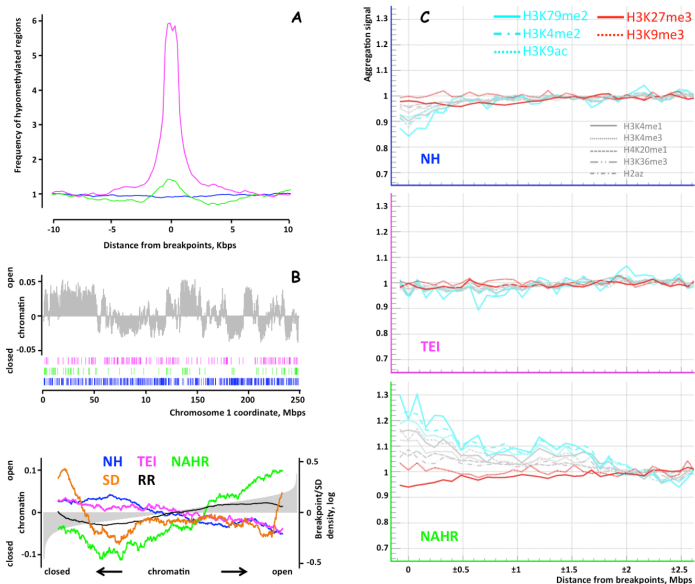
Deleted: But s

Alexej Abyzov 1/2/2015 2:21 AM

Deleted: their correlation

Alexej Abyzov 1/2/2015 2:22 AM

Deleted: with



**Figure 3.** Relation of breakpoints of each class to chromatin states, histone marks and methylation. A) Overlap of breakpoints with hypomethylated regions in sperm. NAHR and TEI breakpoints show strong association. B) Breakpoint co-occurrence with chromatin states, defined by corresponding eigenvector, of Hi-C data (upper panel). The genome wide co-occurrence is ordered by the value of the eigenvector (lower panel). Curves were smoothed using sliding window of 3,000 bins. NAHR breakpoints are associated with open chromatin. This association cannot be explained by higher content of segments duplications (SDs), repeats or recombination rate (RR). C) Association with histone marks. NH breakpoints were depleted for all active marks and also for the H3K9me3 repressive mark (red lines). TEI breakpoints showed weak depletion of active marks. While the density of repressive H3K27me3 mark decreases close to NAHR breakpoints, the density of all active marks increase.

rate with NAHR breakpoints in closed chromatin (Spearman coefficient 0.94) but significantly weaker correlation in the open chromatin (Spearman coefficient 0.28). This suggests two conditions for generating deletions by NAHR.

We further analyzed an association of NAHR breakpoints with 10 chromatin marks (Fig. 3C). The three classes of breakpoints showed very different associations. NH breakpoints were depleted for all active marks and also for the H3K9me3 repressive mark. TEI breakpoints showed weak depletion of active marks. However, NAHR breakpoints were characterized differently. While the density of repressive H3K27me3 mark decreases close to NAHR breakpoints, the density of all active marks increase. As active marks are linked to open chromatin<sup>32</sup>, these observations corroborate the association of NAHR with open chromatin. On finer scale, and as a consequence with less signal statistics, we did not see clear association of breakpoints of any class with DNase hypersensitive sites, markers of open chromatin (Fig. S8).

Next, we used two states of the chromatin interactome as defined by Hi-C experiments<sup>32</sup>, roughly corresponding to open and closed chromatin, to investigate any correlation of breakpoints with open and active DNA chromatin. We tested for the occurrence of breakpoints in genomic bins of 100 kbps assigned to either state. To determine the significance of our findings we fixed relative arrangements of chromatin states and the relative arrangements breakpoints but randomized positions of the states and breakpoints with respect to each other (see Methods). We observed (Fig. 3B) that NH and TEI breakpoints are depleted for open chromatin, while NAHR breakpoints are enriched (p-value < 10<sup>-4</sup>). Segmental duplications (SDs) are known to mediate NAHR. We indeed (Fig. 3B) saw a positive correlation (Spearman coefficient 0.85) between NAHR and SDs but only in the closed chromatin, while in the open chromatin we observed a negative correlation (Spearman coefficient -0.32). Similarly, we observed a strong correlation of recombination

Shantao 1/8/2015 2:05 PM  
Deleted: ,

Shantao 1/8/2015 2:04 PM  
Deleted: Pearson

Shantao 1/8/2015 2:04 PM  
Deleted: Pearson

Shantao 1/8/2015 2:04 PM  
Deleted: Pearso

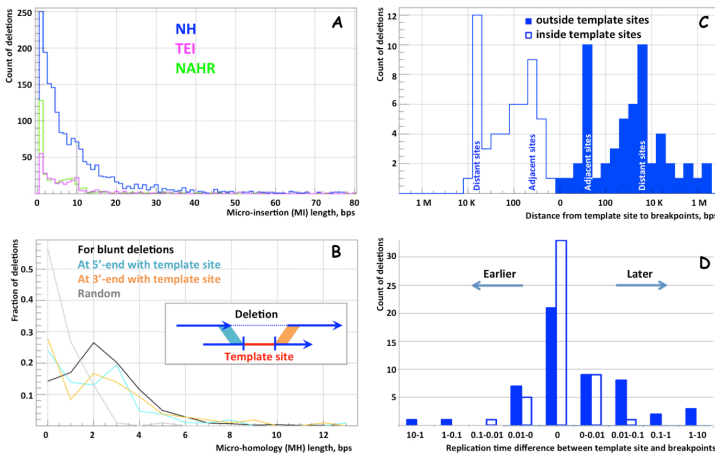
Shantao 1/8/2015 2:04 PM  
Deleted: n

Shantao 1/8/2015 2:04 PM  
Deleted: Pearson

ALSO  
GAP  
BETTER

## Micro-insertions at breakpoint deletions and their relation to replication timing

Multiple studies have reported the existence of micro-inserted sequences at deletion breakpoints. In our dataset we observed 2,391 (27%) deletions with micro-insertions ranging in length from 1 to 96 bps with the majority being less than 10 bps in length (**Fig. 4A**). Those could arise from technical ambiguities in breakpoint reporting when there are SNPs or indels close to breakpoints (see **Methods**).



**Figure 4.** Analysis of micro-insertions (MI) at deletion junctions. A) MIs up to 10 bps in length could arise from technical ambiguities in breakpoint reporting when there are SNPs or indels close to breakpoints. Larger MIs are typically found for NH deletions. B) Length of micro-homology (MH) at deletion junction. For deletions with MIs and identified template site, MHs are calculated for 5'-ends/3'-ends of the deletion and the template site (panel insert). Both ends show MI longer than expected by chance and similar to the distribution for blunt deletions. C) The distribution of the nearest distance from template site breakpoints in  $\log_{10}$  scale. The distribution is almost symmetrical and exhibits distinct peaks at  $20 \pm 10$  bps (adjacent sites) and at  $4 \pm 2$  kbps (distant sites). D) The difference in replication time between template site and breakpoints reveals later replication of template sites. For template sites outside the deletion the effect is significant ( $p$ -value  $< 0.03$  by binomial test). The effect is even more significant ( $p$ -value  $< 0.01$ ) when excluding difference of up to 0.01, as such small values are comparable to measurement error.

chromosome, totaling 25 (19%). Seven template sites spanned breakpoints and were excluded from analysis.

It was previously observed that NH events typically have few bases of homology around their breakpoints and template sites<sup>14-16,33</sup>. We do confirm this observation (**Fig. 4B**) for blunt deletions and those 101 template sites located on the same chromosome as the corresponding deletion. However, no sequence micro-homology around breakpoints was apparent for deletions having template sites on different chromosomes (**Fig. S9A**).

The distribution of the nearest distance between template site and either of the breakpoints revealed preferred relative arrangement (**Fig. 4C**). The template site was typically located either at  $20 \pm 10$  bps (adjacent site) or at  $4 \pm 2$  kbps (distant site) of one of the breakpoints. The existence of such characteristic distances may signify the mechanism(s) leading to the generation of micro-insertions.

We therefore focused the following analyses on micro-insertions longer than 10 bps.

As in previous studies<sup>15,16</sup>, micro-insertions were observed almost exclusively (83%) for NH events. It has been suggested that template-switching mechanisms during replication generate deletions with micro-insertions that are copies of some sequence in the genome<sup>13</sup>. To test for this possibility we determined the likely genomic origin, i.e., the template site, of 133 (37%)

inserted sequences of which 114 were 20 bps or longer, constituting 42% of all micro-insertions of such length (**Table S4**). Other micro-insertions did not map to the reference genome, mapped only partially, or mapped to multiple locations. We categorized template sites as those: i) within a deletion,

which were 49 (37%) in total; ii) outside of a deletion but on the same chromosome, totaling 52 (39%); and iii) on a different

Alexej Abyzov 1/4/2015 2:08 AM

Deleted: are likely to

Alexej Abyzov 1/4/2015 2:16 AM

Deleted: Most

Alexej Abyzov 1/4/2015 2:16 AM

Deleted: are

Alexej Abyzov 1/4/2015 2:16 AM

Deleted: and likely to

Alexej Abyzov 1/4/2015 2:13 AM

Deleted: S3

Alexej Abyzov 1/2/2015 2:12 AM

Deleted: proximal

Alexej Abyzov 1/2/2015 2:13 AM

Deleted: distal

Alexej Abyzov 1/4/2015 2:19 AM

Deleted: S4A

Alexej Abyzov 1/2/2015 2:13 AM

Deleted: proximal

Alexej Abyzov 1/2/2015 2:13 AM

Deleted: distal

ASYM

It was previously noted<sup>34</sup> that breakpoints of deletions generated by different mechanisms are associated with different replication times. We confirm those observations: NAHR deletions are typically associated with early replicating regions, NH with later ones, while TEIs show no significant relation to replication time. Furthermore, template sites outside deletions typically replicate later (Fig. 4D) than breakpoint regions ( $p$ -value < 0.03 by binomial test). However, the same effect was not significant for template sites within deletions. This observation can be easily rationalized, as replication time can be determined only on a large scale and is typically the same within an entire deleted region. Similarly we did not see preference for later or earlier replication times for template sites on different chromosomes (Fig. S9B).

MORE MECH

## Discussion

In this study we derived a large set of germline deletion breakpoints. This set represents deletions across a broad scale and length, with high quality of breakpoint sequences, and across three likely mechanisms of origin, thereby allowing us to categorize breakpoints into 3 classes: NH, NAHR, and TEI. It should be noted that NAHR and TEI events are more difficult to discover as they contain repeats, and so are likely to be underrepresented in this set. Further analysis revealed that a common feature for breakpoints of all classes is the association with evolutionarily less conserved genomic regions, spanning up to hundreds of kilobases downstream and upstream of the breakpoints. This is likely due to purifying selection disfavoring deletions. Selection is likely the reason explaining co-occurrence of breakpoints in each class with SNPs. Alternatively, one can suggest that genomic features, like nucleosome occupancy<sup>35</sup> and replication timing<sup>34</sup>, that predispose to certain classes of SV may also predispose to certain classes of nucleotide substitution. We did not observe association of breakpoint in any class with DNase hypersensitive sites. Also, differential association of breakpoints in each class with replication timing (i.e., NAHR with early, NH with late, and no association for TEI) and association of SNP with late replication, make it unlikely that replication timing explains co-occurrence of SNPs and deletions. Though, replication timing can be a contributing factor to association of NH breakpoints and SNPs. Associations with other measures—CpG motif density, various types of nucleotide substitutions, histone marks, open chromatin, and methylation—were also different between mechanisms.

WITH

The classical NAHR mechanism postulates meiotic cell division as a requirement for generating a germline SV. This implies certain associations that we did observe in our study. In particular, NAHR breakpoints were associated with higher recombination rates, with higher GC content and with higher density of CpG motifs. However, and unlike other classes, they were also associated with open chromatin and active histone marks in mitotically dividing cells. This poses a paradox. No defined structure of DNA exists at the time of chromosome segregation<sup>36</sup> and histone marks are gone<sup>37</sup>, thus, no association of breakpoints with open/active chromatin is expected. In fact, as a result of purifying selection one might expect an inverse relation of breakpoints with open chromatin and active histone marks, such as in the case of NH breakpoints. Neither recombination rate nor the fraction of bases in segmental duplications nor repeats explain these associations for NAHR breakpoints.

Additionally, we found two lines of evidence associating NAHR breakpoints with hypomethylation: lower frequency of C to T SNPs in CpG motifs and an enrichment with demethylated regions in sperm. NAHR have been previously suggested to be associated with hypomethylation<sup>38</sup>, but the findings were debated with the notion that technical variability may explain the association<sup>39</sup>. In our SNP aggregation analysis we used only those sites where SNPs from whole genome sequencing could be confidently determined. This is about 70% of the genome with most of the repetitive regions being masked out. Demethylated regions in sperm used in our study were determined from comparative analysis of methylation profiles that are directly inferred from whole genome bisulfide sequencing in sperm and embryonic cell. Such comparative analysis is not likely to be influenced by technical artifacts. We, thus, state that the observed association of NAHR breakpoints with hypomethylation is not artificial, though not as strong as Li et al. suggested<sup>38</sup>. It also corroborates association of NAHR breakpoints with open

MENTION HERE 2.

Alexej Abyzov 1/4/2015 2:21 AM

Deleted: S4B

Alexej Abyzov 1/4/2015 11:05 PM

Deleted: SVs

Shantao 1/8/2015 4:55 PM

Deleted: ,

Shantao 1/8/2015 4:57 PM

Comment [5]: Methylation is not something linked with meiotic division crossovers. Just gene conversion → higher GC → higher CpG

Shantao 1/8/2015 4:56 PM

Deleted: , and with methylation-linked mutations

Shantao 1/8/2015 4:54 PM

Deleted: and

Shantao 1/8/2015 5:03 PM

Deleted: de-

Shantao 1/8/2015 4:59 PM

Deleted: -

Shantao 1/8/2015 4:59 PM

Deleted: -

Shantao 1/8/2015 5:02 PM

Deleted: , and

Shantao 1/8/2015 5:02 PM

Deleted: s

Alexej Abyzov 1/3/2015 1:30 AM

Deleted: argue

Shantao 1/8/2015 5:02 PM

Deleted: de-

Alexej Abyzov 1/3/2015 1:31 AM

Deleted: ,

Alexej Abyzov 1/3/2015 1:35 AM

Deleted: is real and



chromatin. The association of NAHR with early replication timing is also stunning. By the time of chromosome segregation, DNA replication is complete and replication time should not play a role.

Based on all these observations, we hypothesize that a fraction of structural variations mediated by NAHR could originate in germ cells and early embryonic cells without replicating DNA and dividing. Open/active chromatin contains unpacked DNA that is easy to melt and may contain single-stranded DNA, for example, as a result of transcriptional activity. Such DNA can serve as a template in double strand break repair pathway for breaks in homologous region(s) that are close in space and thereby likely to be from the same chromosome<sup>32</sup>. In fact, intramolecular NAHR, which is homologous recombination between regions of the same continuous chromosome, has been previously suggested<sup>40,41</sup>, and the consequence of such an event would be generation of a deletion and a piece of extra-chromosomal circular DNA (eccDNA). eccDNA was recently extensively analyzed<sup>42</sup> in mouse somatic tissues and human cancer cell-lines. The striking observation was that eccDNA was enriched in CpGs and exons, supporting the suggestion that unpacked DNA is a requirement for eccDNA generation. The length of eccDNA circles was typically 200-400 bps, but could be as long as 2,000 bps, consistent with median of 418 bp for NAHR deletions in our set. The association with early replication timing in our hypothesis is transient through open chromatin, which replicates first<sup>43</sup>.

The association of TEI breakpoints with SNP density, conservation, open chromatin and histone marks was similar to that of NH breakpoints, but less pronounced. We think this is due to TEIs, as bona fide insertions, are likely to disrupt only a few bases around insertion sites and, thus, are less likely to have deleterious effect as compared to NH deletions spanning from hundreds to millions of bases. TEI association with hypomethylation in sperm is a known phenomenon<sup>31</sup> that we confirmed in our study.

Our analysis also provided insight into the mechanism(s) of generating deletions in the NH class. Such deletions are thought to originate from NHEJ and template switching mechanisms during replication, such as FoSTeS or MMBIR. The template switching mechanisms predict<sup>13</sup> that a replication fork can accidentally switch sites of template DNA during DNA duplication. Switching sites skips some genome sequences, thereby generating deletions, or re-replicates the same sequence, thereby generating duplications. Micro-insertions are generated at breakpoints when switching occurs more than once. We found that template sites for MIs have sequence micro-homology at breakpoints, are located at two characteristic distances from breakpoints ( $20 \pm 10$  bps - adjacent and  $4 \pm 2$  kbps - distant), and replicate later than the regions of breakpoints. In about half of cases template sites were within breakpoints of corresponding deletions. One might explain such cases by the co-occurrence of two deletions (or of a deletion and an indel), generated in different individuals (possibly by different mechanisms) and eventually integrated on the same allele and discovered as a single deletion. In other words, it might be suggested that micro-insertions are genomic sequences between two adjacent variants. We think that such an explanation does not apply to most cases. The distributions of the nearest distance to breakpoints for sites within and outside breakpoints are very similar and both have the same two characteristic distances. This suggests that deletions with MI template sites within and outside breakpoints are generated by the same mechanism, e.g., by template switching. As template sites from outside deletions could not be explained by variant co-occurrence, we argue that template sites within deletions could not be explained by variant co-occurrence either.

We also observed that template sites at different chromosomes do not have sequence micro-homology at breakpoints and are not associated with later or earlier replication times. This may imply that deletions with template sites on the same and different chromosomes are created by different mechanisms, e.g. MI was copied from RNA transcribed from distant region<sup>26</sup>, as we found one such event. It is also possible that template sites on different chromosomes arise from mis-mapping the sequences of micro-insertions.

We further hypothesize that the distance to template sites could be related to DNA packing in a cell during replication. For example, larger characteristic distances could reflect the length of DNA when wrapped with one loop around the replication bubble to bring a template site close to a collapsed or stalled replication fork. The later replication times of template sites suggest that it would still be in the

EARLIER?

- Alexej Abyzov 1/3/2015 2:04 AM  
Deleted: We, therefore,
- Alexej Abyzov 1/3/2015 2:08 AM  
Deleted: and germ
- Shantao 1/8/2015 5:05 PM  
Deleted: the cells
- Alexej Abyzov 1/1/2015 6:43 PM  
Deleted: without
- Alexej Abyzov 1/3/2015 2:08 AM  
Deleted: replication
- Alexej Abyzov 1/3/2015 2:08 AM  
Deleted: and then be passed on through the germline.
- Alexej Abyzov 1/4/2015 2:32 AM  
Deleted: s

- Shantao 1/8/2015 5:03 PM  
Deleted: de-

- Alexej Abyzov 1/2/2015 2:13 AM  
Deleted: proximal
- Alexej Abyzov 1/2/2015 2:13 AM  
Deleted: distal

EXA

form of a double helix and when dissociated, perhaps by another replication bubble, could provide the template sequence for template switching by the collapsed or stalled fork.

Large high quality breakpoint dataset significantly empowered our analysis. For example, 133 mapped template sites of MIs constitute only 1.5% of all breakpoints in our set. Previous studies dealt with smaller sets, and similar analysis was not feasible. Future studies will have larger and more comprehensive, including for duplications and inversions, breakpoint sets. Thus, it is likely that our knowledge of mutational mechanisms for SVs will be further expanded and refined.

## Methods

### Discovery and merging

Deletions discovered by five CNV callers<sup>44-48</sup> were merged with the set of breakpoints discovered in 180 pilot samples of the 1000 Genomes Project<sup>17</sup>. The merged set contained 113,649 deletion calls. For each call we collected read pairs around its boundaries in samples where the deletion was discovered and assembled them with TIGRA-SV<sup>22</sup> into contigs spanning breakpoints. The contigs were aligned to the deleted regions with CROSSMATCH and AGE<sup>23</sup> to identify deletion breakpoints (see below). This way we inferred 36,237 breakpoints, of which 17,947 (50%) breakpoints were exactly the same by the two approaches, 9,537 (26%) breakpoints were different by the two approaches, and 8,753 (24%) were uniquely inferred by either one of the approaches. In cases where the two approaches inferred different breakpoints, we chose breakpoints from AGE alignments, as the AGE method was specifically designed to align contigs with structural variations. Given the large disagreement between the two approaches we further filtered breakpoints by aligning unmapped reads to sequence junctions of the deletions (see below and **Fig. 1**). Based on PCR validation, we performed an additional filtering of deletions to reduce systematic false positives arising from the use of synonymous split-read (SR) approaches: deletion calling by SR, breakpoint derivation from assembly (which is SR-based), and filtering from read mapping to junction (which is SR-like). To summarize, all filtering steps were: i) removing breakpoints not passing criteria for support by mapped reads to their junction (see below); ii) removing deletions classified as VNTR, as their breakpoints are in very repetitive regions; iii) removing breakpoints only found by split-read calling approaches Delly, Pindel, and assembled in the pilot (the reason is that in case of mistake by a discovery methods, assembly/filtering is likely to repeat it, because relying on SR approach) iv) removing deletions with breakpoints inferred from only CROSSMATCH alignments; v) removing deletions called by only one method with breakpoints inferred from only AGE alignments. The first three filters were the most effective in removing false positive calls (**Fig. S10**). The final set consisted of 8,943 deletion breakpoints with consistent FDR estimates from PCR (6.8%) and IRS (6.4%) tests for deletion presence, and 13.7% for deletion with correct breakpoints from PCR. FDR for deletion breakpoints includes mistakes when deletion is not present but also includes cases in which the breakpoint is incorrectly determined (**Fig. S1**). Around 16% of deletions were present in only one initial call sets merged (Fig. S10), stressing that the majority of deletion sites were detected by multiple algorithms.

### Defining breakpoints from CROSSMATCH alignments

For a contig assembled from an intra-chromosomal variant in the genomic interval [a,b], we prepared a local reference sequence excised from [a-w,b+w], with w=500 bp by default. For a contig assembled from an inter-chromosomal rearrangement, we prepared two local reference sequences from [a-w, a+w] of chromosome c1 and from [b-w, b+w] of chromosome c2, respectively. We mapped each contig assembled by TIGRA to the corresponding reference sequences using CROSSMATCH. In the default setting, we used the following CROSSMATCH parameters: -bandwidth 20 -minmatch 20 -minscore 25 -penalty -10 -discrep\_lists -tags -gap\_init -10 -gap\_ext -1. We removed contigs that had more than 2 hits to the reference and ignored alignments that had substitution rates greater than 0.5%. If a contig differs substantially from the reference, CROSSMATCH returns multiple local alignments, together with a set of statistics describing the quality of the alignments. A glocal alignment (combination of local and global alignment) was constructed from these local alignments<sup>49</sup>. We used that alignment as the basis for

10

Alexej Abyzov 1/4/2015 10:24 PM  
Deleted: S5

Alexej Abyzov 12/19/2014 3:41 PM  
Deleted: S5

reporting the existence of breakpoints and details about the type, size, orientation, and location of the breakpoints (Fig. S11). For example, the glocal alignment that supports a deletion breakpoint contains two local 1-monotonic alignments to the reference<sup>50</sup>. The gap between the end position of the first alignment and the start position of the second alignment corresponds to the size of the deletion, while the bases shared by both alignments correspond to breakpoint homology.

### Defining breakpoints from AGE alignments

Contigs assembled by TIGRA-SV at least 100 bps in length were aligned to the corresponding predicted deleted region extended by 2 kbps downstream and upstream. AGE was run with option '-indel -match=1 -mismatch=-10 -go=-10 -ge=-1', which specifies that contigs or reference region are expected to have large insertions/deletions; that the score for base match is 1; that the mismatch penalty is -10; that the gap opening penalty is -10; and that the gap extension penalty is -1. Alignments consistent with the predicted deletion were selected to identify deletion breakpoints. The consistency was defined by the following criteria: i) at least 90% of bases in a contig are aligned; ii) there must be at least 98% of identical bases in entire alignment; iii) there should be at least 97% identical bases in alignment of each flank, i.e., downstream or upstream from the deletion; iv) each flank must have at least 30 base pairs aligned; v) regions between breakpoints must have 50% reciprocal length overlap with the predicted deletion bounds; vi) breakpoints should be within 200 bps of the predicted deletion bounds; vii) alternative alignments, if any, must satisfy all of the conditions above. In case of multiple contig alignments satisfying the above condition, the one with the contig of highest coverage, as per assembly, was chosen to define breakpoints.

### Filtering breakpoints by mapping unmapped reads to breakpoint junctions

Most of the reads utilized in assembly were from 30 to 70 bps in length, i.e., rather short. This fact complicates assembly and makes it rather prone to mistakes, particularly in repetitive regions, for which deletion breakpoints are enriched. Therefore, to ensure physical (rather than artificial, as a result of assembly error) continuity of flanking and inserted (if any) sequences at breakpoints we performed breakpoint filtering by utilizing unmapped reads. For each derived deletion breakpoint we constructed a breakpoint junction sequence by joining 100 bps downstream with 100 bps upstream of the breakpoints. The micro-insertion (if present) was inserted in the middle. The set of all 36,237 junctions sequences from 200 to 298 bps in length comprised the junction library. Unmapped reads were mapped to the junction library using Bowtie 0.12.7<sup>51</sup> with the options '--best --strata -v 3 -m 1', requiring that ungapped alignments are made with at most 3 mismatches and that only unique alignments are reported. Prior to mapping, and in the same way it was done by BWA<sup>52</sup> during alignment preparation by the 1000 Genomes Project, the reads were trimmed at low quality 3'-end up to the average base-quality of 15. Reads mapping with less than 3% of mismatches of their length and having aligned bases in downstream and upstream flanking sequences were considered in potential support of the junction they aligned to. We chose a particular cutoff  $d$  on the number/fraction of bases aligned to each flank for deciding, which reads supported breakpoints. Breakpoints that had supporting reads from two different individuals passed the filter. This requirement ensures that breakpoints passing the filter are for heritable germline deletions, as singletons could be of somatic origin.

In total, we attempted realigning 15.8 billion reads to the junction library. Given the large number of realigned reads and the large size of the junction library, some of the read mappings could have been mapped by chance. To discriminate between real and random mappings we developed an empirical null model (Fig. 1C). The model is based on imitating the junction library with semi-random sequences, thereby creating a null junction library, and mapping unaligned reads to that null library. Such a mapping will represent random noise and can be used for optimizing values of  $d$ . The library is generated from inner sequences of deleted regions (Fig. 1C). Such an approach is advantageous in that it allows

preserving genomic (e.g., nucleotide content and sequence homology at breakpoints) and data features (e.g., read coverage) associated with the loci of breakpoints.

We realigned all unmapped reads to the null junction library and varied the values of  $d$  to find the cutoff at which the number of null junction passing the filter was <5% of the number of real junctions passing the filter at the same cutoff (**Fig. S12**), i.e., we aimed for <5% *in-silico* FDR. This criterion led to setting the value of  $d$  at 13 bps. The empirical null model allowed us to stratify the precision of breakpoint by various categories. For example, and as expected, we observed that breakpoints found by only one approach (either AGE or CROSSMATCH based) have higher *in-silico* FDR. The order of breakpoints of different classes by corresponding *in-silico* FDR was (from lowest to highest): NH, TEI, NAHR, and VNTR. This is also expected, as breakpoints of different classes have progressively more repeats around their breakpoints in the same order.

To summarize, we developed an empirical model that captures essential biological features of breakpoints, that is not biased because it uses data loci different from the breakpoints, and that allows the translation of random mappings into estimated FDR. We suggest that such empirical models can be used to estimate FDR of genotyping known breakpoints from sequencing data. However, when it is applied to breakpoint filtering/validation, one should keep in mind that the approach may not account for systematic false positives arising during structural variant calling by split-read method(s), as was observed in our analysis (see above).

### PCR and IRS validations

We selected 15-22 deletions of each class for PCR validation. Deletions were selected randomly but required to be genotyped in at least two samples out of 319 for which we had DNA available. Here we relied on genotyping by mapping reads to deletion breakpoint sequence junctions. For the selected deletions we designed primers with Primer3 such that the primers would amplify the breakpoint sequence. For each deletion we ran PCR in at least one sample genotyped as having it and sequenced resulting band with Sanger technique. In case the deletion was not confirmed we ran PCR in another sample genotyped as having it.

Intensity Rank Sum (IRS) validation was described elsewhere<sup>17</sup>. Briefly, the validation considers intensities of SNP probes within deleted regions and correlates it with deletion genotypes across samples. It is expected that for such SNPs, samples with deletion will have lower intensity values than samples without the deletion. Rank sum tests are performed to access the statistical significance of correlations. IRS only tests the validity of deletion sites and does not provide validation of breakpoints. Results of performing this exercises are summarized in (**Fig. S10**).

### Comparing with OMNI genotypes

A set of 11,472 breakpoints derived in the pilot of the 1000 Genomes Project was tested on a custom SNP array designed by ILLUMINA and named OMNI 2.5s array. The pairs of probes were designed such that one probe would hybridize to the reference allele and the other one to the breakpoint sequence, i.e., to the alternative allele. The probes were different in only one nucleotide to mimic probes for SNP genotyping. Accordingly, all the downstream hybridization signal processing was performed with standard software for SNP array analysis.

Probe design, hybridization in 431 individuals, and genotyping quality control resulted in confident array-derived genotypes for 4,385 (38%) breakpoints. 2,483 of our confident breakpoints were in this set (**Table S1**) and 292 individuals were both sequenced by the 1000 Genomes Project and genotyped by this array. Comparison of samples genotyped as having a deletion by array to those done by mapping reads to sequence junctions, as we did for filtering breakpoints, revealed that individuals with deletion genotypes by read mapping represent almost a perfect subset of those genotyped by arrays (**Fig. S2**). This is easy to rationalize by noting that individuals in the 1000 Genomes Project were sequenced at a shallow 4-8X coverage, and thus not likely to have many reads covering breakpoint sequences, particularly in the case of heterozygous deletions. Furthermore, the requirement that reads mapped to

Alexej Abyzov 1/4/2015 10:27 PM

Deleted: S7

Alexej Abyzov 1/4/2015 10:27 PM

Deleted: S5

Alexej Abyzov 12/18/2014 1:30 PM

Deleted: S8

deletion sequence junction must extend at least 13 bps across the junction in each direction further reduces the number of reads that we consider supporting deletions.

### Confirmation of breakpoints in high coverage trios

Breakpoint [confirmation](#) was performed using data for two trios sequenced with HiSeq 2500 at 60X coverage with 250 bp reads. The 8,943 deletions in our confident set were genotyped in trios by CNVnator<sup>44</sup>, and when genotypes suggested the presence of deletions (estimated copy-number less than 1.5 or less 0.5, for diploid and haploid regions, respectively), corresponding breakpoints were selected for further investigation. Read pairs with coordinates in the 2 kbp vicinity of these regions were extracted from BAM files, and each [pair](#) was tested for an overlap at 3'-ends. If a suitable overlap was detected, the reads were merged into a long continuous (gapless) genomic fragment.

The reads in the HiSeq 2500 data were 250 bp in length, with average insert size of ~400 bp (**Fig. S13**). This means that the reads in most read pairs significantly (50 bp or more) overlapped in sequence at 3'-ends. In our validation method, we merged overlapping read pairs to construct long genomic fragments. To merge a given pair aligned near deletion breakpoints, we needed to estimate the length of its overlapping sequence. We slid the 3'-ends of each read in a pair against each other starting from an overlap of 1 base and continuing up to 250 bases. For a given overlap of length  $n$ , we assumed a binomial distribution for the number of mismatches. We selected overlap lengths that minimized the  $p$ -value under this assumption, i.e., given  $k$  mismatches in a overlap of length  $n$ , the probability that at most  $k$  mismatches would occur by chance with the uniform probability for each mismatch of  $p_{mismatch} = 0.75$ . We only considered merged read pairs that had mismatch counts less than 20% of overlap length, and  $p$ -values smaller than  $10^{-10}$ . We tested our approach by independently aligning overlapping reads and comparing these overlaps to those from alignment. Consistent overlaps were observed for 99.95% of read pairs (**Fig. S14**). Pairs of reads with identified overlaps were merged into genomic fragments, and bases in overlapping sequences were chosen by taking the base with the higher quality score at positions of mismatches. These genomic fragments were from 250 to 480 bps in length and of higher sequencing quality than either of the reads in the original pair alone.

Using AGE<sup>23</sup>, we generated split-fragment alignments of such fragments around breakpoints and searched for breakpoint support the same way we did for contig alignment with AGE (see above). We considered breakpoints with such supporting reads as at least partially confirmed. We considered a given breakpoint to have perfect support if read alignments had breakpoint coordinates and micro-inserted sequences (if any) that matched exactly. A breakpoint was considered [confirmed](#) if the majority of split-fragment alignments consistent with the deletion matched the breakpoints perfectly. We confirmed 3,034 (34%) breakpoint sequences perfectly, and for 423 (4.7%) more we observed slight differences in the sequence at breakpoints.

Our ability to confirm breakpoints was confounded by incorrect genotypes (i.e., deletion not present in a sample but genotyped as such), as we observed lower confirmation rate for smaller deletions (Fig. S15). Additional confounding factor was the limited ability to construct long reads, because of 3'-ends had high sequencing error and reliable overlap for paired reads could no be found. In our calculations less than 30% of considered pairs of reads have identifiable overlap. Therefore, fraction of not confirmed breakpoints included FDR of breakpoint set, genotyping error, and absence of long reads. To estimate FDR of the set we minimized contribution of the latter two confounding factors by considering deletions larger than 10 kbp and genotyped in at least 3 individuals. This resulted in FDR estimate of 18% for deletion presence with correct breakpoints.

### Aggregation calculation

Almost 40 million of SNPs and indels found by the 1000 Genomes Project<sup>21</sup> in the same group of individuals were aggregated around the breakpoints of each class. To reduce the contamination of our analysis with false positive calls, we only used SNPs and indels that reside in the confident sites as defined by the mask derived by the project. This reduced the number of variants by 25%. SNP density

Alexej Abyzov 12/11/2014 3:54 PM  
Deleted: validation

Alexej Abyzov 12/11/2014 6:28 PM  
Deleted: (see next section)

Alexej Abyzov 1/4/2015 10:31 PM  
Deleted: S9

Alexej Abyzov 1/4/2015 10:31 PM  
Deleted: S10

Alexej Abyzov 12/11/2014 3:53 PM  
Deleted: validated

Alexej Abyzov 12/11/2014 6:28 PM  
Deleted: ... [1]

GRAM

was calculated with respect to the number of such sites. Densities of substitutions at C and G bases were calculated with respect to the number of not masked C and G sites. Densities of substitutions at A and T bases were calculated with respect to the number of not masked A and T sites. Each aggregated density was then normalized to yield density of one in the interval [ $\pm 500$  kbps,  $\pm 1$  Mbps].

Histone mark data generated by ENCODE<sup>19</sup> project were used for the aggregation analysis. We utilized contained normalized histone signals provided by the project. Aggregated signal in each bin was normalized with respect to number available bases, i.e., undetermined bases of the reference genome were excluded from the aggregation. Each aggregated signal was then normalized to yield signal of one in the interval [ $\pm 2$  Mbps,  $\pm 4$  Mbps].

We utilized methylation data generated with bi-sulfide sequencing by The NIH Roadmap Epigenomics Mapping Consortium<sup>20</sup>. The data were provided for only those CpG sites where confident methylation level estimation could be made, which is about 95% of all CpG sites. Aggregated methylation levels were then normalized to the number of CpG sites.

### Intersection with open/closed chromatin

We used the Hi-C data generated on human lymphoblastoid cell line<sup>32</sup> (GM06990). In that study, chromatin states were defined from chromatin interaction matrix eigenvectors that correspond to chromatin states. The matrix was calculated for consecutive non-overlapping genomic bins of 100 kbs in length: negative values represent closed chromatin states, and positive ones represent open status. There were total 28,481 bins with non-zero eigenvector values. We assigned each breakpoint with an eigenvector value by finding the bins they belong to. NAHR breakpoints have higher eigenvector values, indicating a more open chromatin state. Meanwhile, NH and TEI breakpoints show lower values (**Fig. 3A**). To test this hypothesis, we utilized a **nonparametric** rank sum test with restricted permutation. Rank sum was defined by the summation of ranks of the eigenvalues of certain breakpoint subtypes. Then the observed rank sum was compared with an empirical distribution generated by circular permutation. That is, we joined the end of the whole genome bin array with the beginning to make it circular, and rotated this circular array to every possible position. We calculated the rank sum for each position. This forms an empirical distribution for the null hypothesis. The p-values are corrected by Bonferroni method for multiple testing, i.e., testing for three sets of breakpoints: NH, TEI, and NAHR.

### Double-strand break analysis

We used an aphidicolin-generated double-strand break map of HeLa cell line<sup>53</sup>. We counted the number of breakpoints fall into the bins provided in the original dataset. Then we compared the counts with the empirical distribution generated by circular permutation generated the same way as for comparison with open/closed chromatin (see above).

### Mapping template sites

The majority of micro-insertions are less than 10 bps in length (**Fig. 4A**). These are likely to be explained by the existence of base mismatches or indels close to deletion breakpoints in the aligned contig. Mismatches and indels are penalized and including them in the alignment decreases the overall alignment score, while aligning few bases between the mismatch/indel and breakpoints cannot compensate for the alignment score decrease. As such, an aligner chooses not to align those few bases and reports them as a micro-insertion. Given our alignment parameters (see **Methods**) it is likely that micro-insertions shorter than 10 bps arise due to such effect. An enrichment of point mutations close to deletion breakpoints has been previously described<sup>33</sup> and was also observed in this study on a larger scale (**Fig. 1**). We therefore performed the following analyses for micro-insertions longer than 10 bps.

We first uniquely mapped MIs with up to one mismatch to the reference genome using Bowtie<sup>51</sup> with the following options '-n 0 -l 5 -r --best --strata -v 0 -m 1'. Next, not mapped MIs of at least 20 bases in length were aligned to the reference genome by Blat<sup>54</sup>. We then manually examined alignments and selected only one such that: i) MI is aligned almost full length with few mismatches and/or short indels,

Alexej Abyzov 1/4/2015 10:38 PM

**Deleted:** in each bin and then normalized to yield level of one in the intervals [ $\pm 2$  Mbps,  $\pm 4$  Mbps]

Shantao 1/8/2015 1:43 PM

**Deleted:** 9

Shantao 1/8/2015 1:43 PM

**Deleted:** 195

ii) the alignment has much better alignment score than other alignments. In total we mapped 133 template sites, of which 66 were mapped manually (**Table S4**).

### Replication time analysis

We utilized data by Koren et al.<sup>34</sup>, which had average replication timing from 3 experiments. Using the data we identified replication time to each breakpoint and template site. Difference in replication time can be calculated relative to each breakpoint. We use the difference that is smaller in absolute value.

### Calculating association with recombination rates

Recombination rate data was derived from the Rutgers third generation genetic map. We used the sex-averaged genetic positions, ignoring the X and Y chromosomes. Genetic positions were divided by the difference in adjacent physical positions in the map in order to obtain values in terms of centimorgans per base pair (cM/Bp). Linear interpolation was performed to obtain recombination rate values for each base of each chromosome. Significance values we obtained by conducting a circular permutation experiment in the same fashion as for intersection with open/closed chromatin (see above). NAHR breakpoints in our set were strongly associated with higher recombination rates (enrichment of 1.4 with  $p\text{-value} < 10^{-3}$ ), while no significant association for breakpoints of other classes was observed (**Fig. S16**).

Alexej Abyzov 1/4/2015 10:36 PM

Deleted: S3

Alexej Abyzov 1/4/2015 10:36 PM

Deleted: S11

## References

1. Feuk, L., Carson, A. R. & Scherer, S. W. Structural variation in the human genome. *Nat. Rev. Genet.* **7**, 85–97 (2006).
2. Sharp, A. J., Cheng, Z. & Eichler, E. E. Structural variation of the human genome. *Annu Rev Genomics Hum Genet* **7**, 407–442 (2006).
3. Conrad, D. *et al.* Origins and functional impact of copy number variation in the human genome. *Nature* **464**, 704–712 (2009).
4. Stankiewicz, P. & Lupski, J. R. Structural variation in the human genome and its role in disease. *Annu. Rev. Med.* **61**, 437–455 (2010).
5. Mefford, H. C. & Eichler, E. E. Duplication hotspots, rare genomic disorders, and common disease. *Curr Opin Genet Dev* **19**, 196–204 (2009).
6. Pinto, D. *et al.* Functional impact of global rare copy number variation in autism spectrum disorders. *Nature* **466**, 368–372 (2010).
7. Sebat, J. *et al.* Strong association of de novo copy number mutations with autism. *Science* **316**, 445–449 (2007).
8. McCarthy, S. E. *et al.* Microduplications of 16p11.2 are associated with schizophrenia. *Nat Genet* **41**, 1223–1227 (2009).
9. Wellcome Trust Case Control Consortium *et al.* Genome-wide association study of CNVs in 16,000 cases of eight common diseases and 3,000 shared controls. *Nature* **464**, 713–720 (2010).
10. McCarroll, S. A. *et al.* Deletion polymorphism upstream of IRGM associated with altered IRGM expression and Crohn's disease. *Nat Genet* **40**, 1107–1112 (2008).
11. Lupski, J. R. & Stankiewicz, P. Genomic disorders: molecular mechanisms for rearrangements and conveyed phenotypes. *PLoS Genet* **1**, e49 (2005).
12. Lee, J. A., Carvalho, C. M. B. & Lupski, J. R. A DNA replication mechanism for generating nonrecurrent rearrangements associated with genomic disorders. *Cell* **131**, 1235–1247 (2007).
13. Zhang, F. *et al.* The DNA replication FoSTeS/MMBIR mechanism can generate genomic, genic and exonic complex rearrangements in humans. *Nat Genet* **41**, 849–853 (2009).
14. Lam, H. Y. K. *et al.* Nucleotide-resolution analysis of structural variants using BreakSeq and a breakpoint library. *Nat Biotechnol* **28**, 47–55 (2010).
15. Kidd, J. M. *et al.* A human genome structural variation sequencing resource reveals insights into mutational mechanisms. *Cell* **143**, 837–847 (2010).
16. Conrad, D. F. *et al.* Mutation spectrum revealed by breakpoint sequencing of human germline CNVs. *Nat Genet* **42**, 385–391 (2010).
17. Mills, R. E. *et al.* Mapping copy number variation by population-scale genome sequencing. *Nature* **470**, 59–65 (2011).
18. Ju, Y. S. *et al.* Extensive genomic and transcriptional diversity identified through massively parallel DNA and RNA sequencing of eighteen Korean individuals. *Nat Genet* **43**, 745–752 (2011).
19. ENCODE Project Consortium *et al.* An integrated encyclopedia of DNA elements in the human genome. *Nature* **489**, 57–74 (2012).
20. Chadwick, L. H. The NIH Roadmap Epigenomics Program data resource. *Epigenomics* **4**, 317–324 (2012).
21. 1000 Genomes Project Consortium *et al.* An integrated map of genetic variation from 1,092 human genomes. *Nature* **491**, 56–65 (2012).
22. Chen, K. *et al.* TIGRA: a targeted iterative graph routing assembler for breakpoint assembly. *Genome Res* **24**, 310–317 (2014).
23. Abyzov, A. & Gerstein, M. AGE: defining breakpoints of genomic structural variants at single-nucleotide resolution, through optimal alignments with gap excision. *Bioinformatics* **27**, 595–603 (2011).
24. Pang, A. W. C., Migita, O., MacDonald, J. R., Feuk, L. & Scherer, S. W. Mechanisms of formation of structural variation in a fully sequenced human genome. *Hum. Mutat.* **34**, 345–354 (2013).



25. Pang, A. W. *et al.* Towards a comprehensive structural variation map of an individual human genome. *Genome Biol* **11**, R52 (2010).
26. Callinan, P. A. *et al.* Alu retrotransposition-mediated deletion. *J Mol Biol* **348**, 791–800 (2005).
27. Miura, O., Sugahara, Y., Nakamura, Y., Hirose, S. & Aoki, N. Restriction fragment length polymorphism caused by a deletion involving Alu sequences within the human alpha 2-plasmin inhibitor gene. *Biochemistry* **28**, 4934–4938 (1989).
28. Sigurdsson, M. I., Smith, A. V., Bjornsson, H. T. & Jonsson, J. J. HapMap methylation-associated SNPs, markers of germline DNA methylation, positively correlate with regional levels of human meiotic recombination. *Genome Res* **19**, 581–589 (2009).
29. Jensen-Seaman, M. I. *et al.* Comparative recombination rates in the rat, mouse, and human genomes. *Genome Res* **14**, 528–538 (2004).
30. Molaro, A. *et al.* Sperm methylation profiles reveal features of epigenetic inheritance and evolution in primates. *Cell* **146**, 1029–1041 (2011).
31. Rubin, C. M., VandeVoort, C. A., Teplitz, R. L. & Schmid, C. W. Alu repeated DNAs are differentially methylated in primate germ cells. *Nucleic Acids Res* **22**, 5121–5127 (1994).
32. Lieberman-Aiden, E. *et al.* Comprehensive mapping of long-range interactions reveals folding principles of the human genome. *Science* **326**, 289–293 (2009).
33. Carvalho, C. M. B. *et al.* Replicative mechanisms for CNV formation are error prone. *Nat Genet* **45**, 1319–1326 (2013).
34. Koren, A. *et al.* Differential relationship of DNA replication timing to different forms of human mutation and variation. *Am J Hum Genet* **91**, 1033–1040 (2012).
35. Michaelson, J. J. *et al.* Whole-genome sequencing in autism identifies hot spots for de novo germline mutation. *Cell* **151**, 1431–1442 (2012).
36. Naumova, N. *et al.* Organization of the mitotic chromosome. *Science* **342**, 948–953 (2013).
37. Petruk, S. *et al.* TrxG and PcG proteins but not methylated histones remain associated with DNA through replication. *Cell* **150**, 922–933 (2012).
38. Li, J. *et al.* Genomic hypomethylation in the human germline associates with selective structural mutability in the human genome. *PLoS Genet* **8**, e1002692 (2012).
39. Watson, C. T., Garg, P. & Sharp, A. J. Comment on "genomic hypomethylation in the human germline associates with selective structural mutability in the human genome". *PLoS Genet* **9**, e1003332 (2013).
40. Cohen, S. & Segal, D. Extrachromosomal circular DNA in eukaryotes: possible involvement in the plasticity of tandem repeats. *Cytogenet. Genome Res.* **124**, 327–338 (2009).
41. Turner, D. J. *et al.* Germline rates of de novo meiotic deletions and duplications causing several genomic disorders. *Nat Genet* **40**, 90–95 (2008).
42. Shibata, Y. *et al.* Extrachromosomal microDNAs and chromosomal microdeletions in normal tissues. *Science* **336**, 82–86 (2012).
43. Imakaev, M. *et al.* Iterative correction of Hi-C data reveals hallmarks of chromosome organization. *Nat Methods* **9**, 999–1003 (2012).
44. Abyzov, A., Urban, A. E., Snyder, M. & Gerstein, M. CNVnator: an approach to discover, genotype, and characterize typical and atypical CNVs from family and population genome sequencing. *Genome Res* **21**, 974–984 (2011).
45. Rausch, T. *et al.* DELLY: structural variant discovery by integrated paired-end and split-read analysis. *Bioinformatics* **28**, i333–i339 (2012).
46. Handsaker, R. E., Korn, J. M., Nemesh, J. & McCarroll, S. A. Discovery and genotyping of genome structural polymorphism by sequencing on a population scale. *Nat Genet* **43**, 269–276 (2011).
47. Ye, K., Schulz, M., Long, Q., Apweiler, R. & Ning, Z. Pindel: a pattern growth approach to detect break points of large deletions and medium sized insertions from paired-end short reads. *Bioinformatics* **25**, 2865–2871 (2009).
48. Chen, K. *et al.* BreakDancer: an algorithm for high-resolution mapping of genomic structural

- variation. *Nat Methods* **6**, 677–681 (2009).
49. Brudno, M. *et al.* Glocal alignment: finding rearrangements during alignment. *Bioinformatics* **19** **Suppl 1**, i54–62 (2003).
  50. Chen, K. *et al.* BreakFusion: targeted assembly-based identification of gene fusions in whole transcriptome paired-end sequencing data. *Bioinformatics* **28**, 1923–1924 (2012).
  51. Langmead, B., Trapnell, C., Pop, M. & Salzberg, S. Ultrafast and memory-efficient alignment of short DNA sequences to the human genome. *Genome Biol* **10**, R25 (2009).
  52. Li, H. & Durbin, R. Fast and accurate long read alignment with Burrows-Wheeler transform. *Bioinformatics* **26**, 589–595 (2010).
  53. Crosetto, N. *et al.* Nucleotide-resolution DNA double-strand break mapping by next-generation sequencing. *Nat Methods* **10**, 361–365 (2013).
  54. Kent, W. J. BLAT--the BLAST-like alignment tool. *Genome Res* **12**, 656–664 (2002).