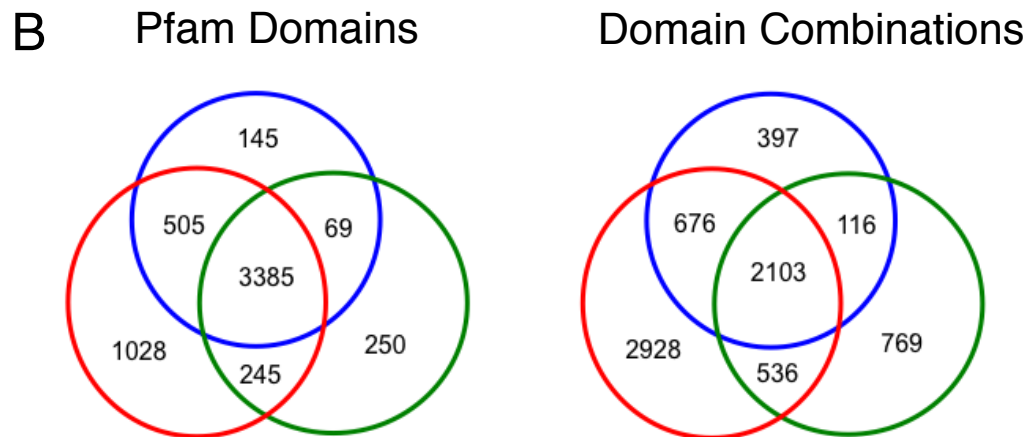
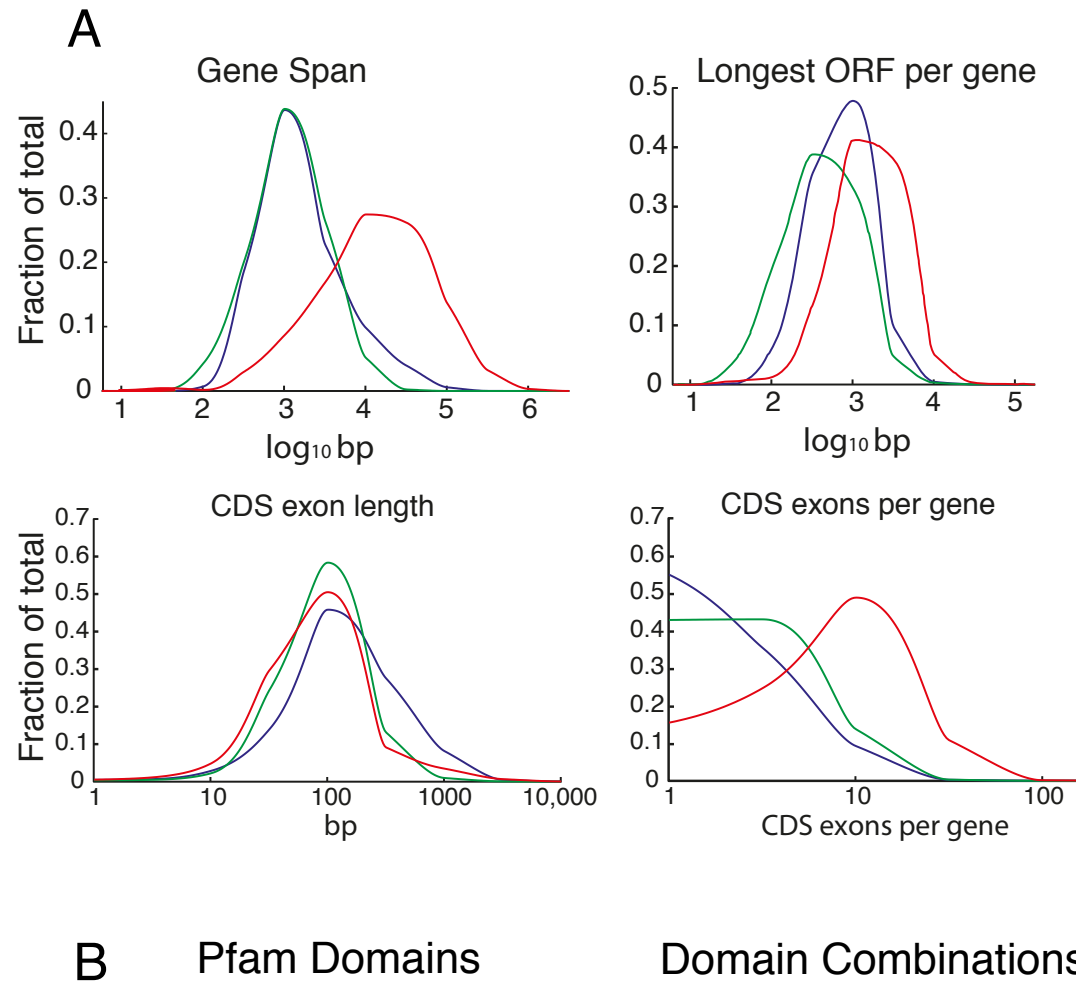


ED Fig. 1

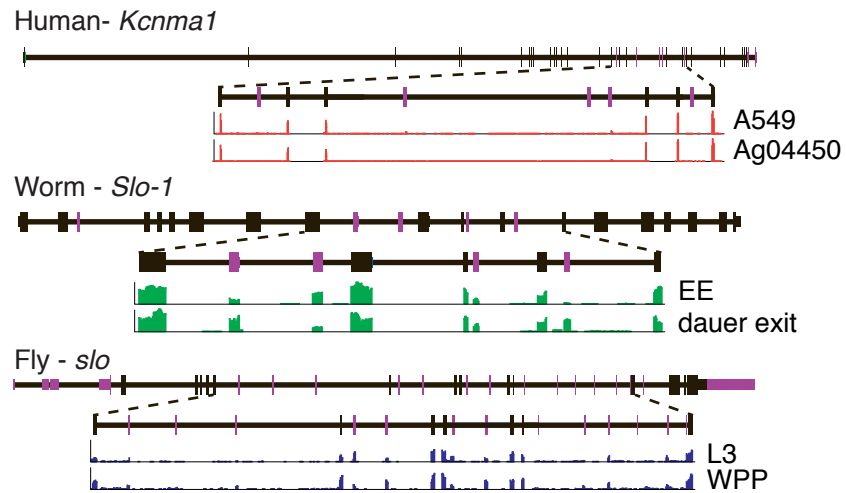


ED Fig. 2

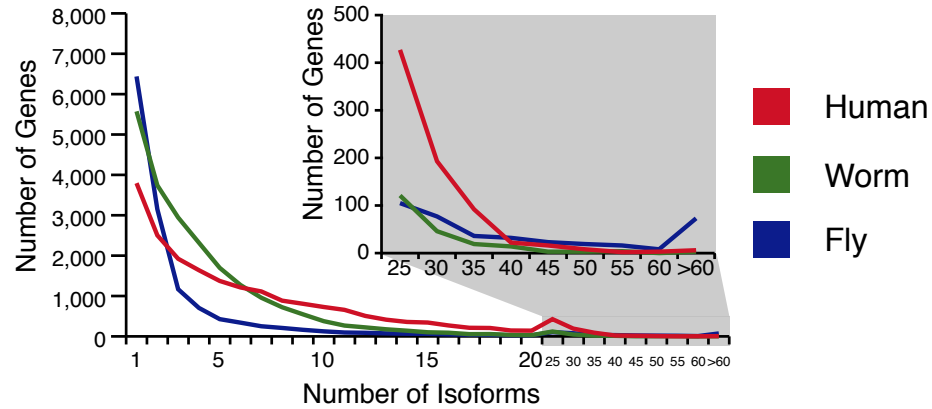
| | | Human Genome Coverage | | | Worm Genome Coverage | | | Fly Genome Coverage | | | |
|-------------------------|-----------------------------------------------------|-------------------------------------|---------|-----------|----------------------|---------|--------|---------------------|--------|--------|-------------|
| | | Elements | Kb | % | Elements | Kb | % | Elements | Kb | % | |
| Sequenced Genome | mRNAs (exons) | 20,007 | 86,560 | 3.0 | 21,192 | 34,437 | 34.3 | 13,940 | 35,970 | 28.0 | |
| | Pseudogenes | 11,216 | 27,089 | 0.95 | 881 | 1,343 | 1.3 | 145 | 155 | 0.12 | |
| | Annotated ncRNAs | 22,154 | 17,770 | 0.62 | 41,466 | 2,611 | 2.6 | 2,155 | 3,279 | 2.6 | |
| | Comparable ncRNAs | miRNAs | 1,756 | 162 | 0.006 | 221 | 20 | 0.02 | 236 | 22 | 0.02 |
| | | tRNAs | 624 | 47 | 0.002 | 609 | 45 | 0.04 | 314 | 22 | 0.02 |
| | | snoRNAs | 1,521 | 168 | 0.006 | 141 | 16 | 0.02 | 287 | 34 | 0.03 |
| | | snRNAs | 1,944 | 210 | 0.007 | 114 | 14 | 0.01 | 47 | 7 | 0.006 |
| | | lncRNAs | 10,840 | 10,581 | 0.37 | 233 | 184 | 0.18 | 852 | 868 | 0.68 |
| | Regions Excluding mRNAs, Pseudogenes & Anno. ncRNAs | | 283,816 | 2,731,811 | 95.5 | 143,372 | 63,520 | 63.3 | 60,108 | 89,445 | 69.6 |
| | | Transcripton Detected (TARs) | 708,253 | 916,401 | 32.0 | 232,150 | 37,029 | 36.9 | 83,618 | 44,256 | 34.5 |
| Supervised Predictions | | 104,016 | 13,835 | 0.48 | 2,525 | 392 | 0.39 | 599 | 164 | 0.13 | |

ED Fig. 3

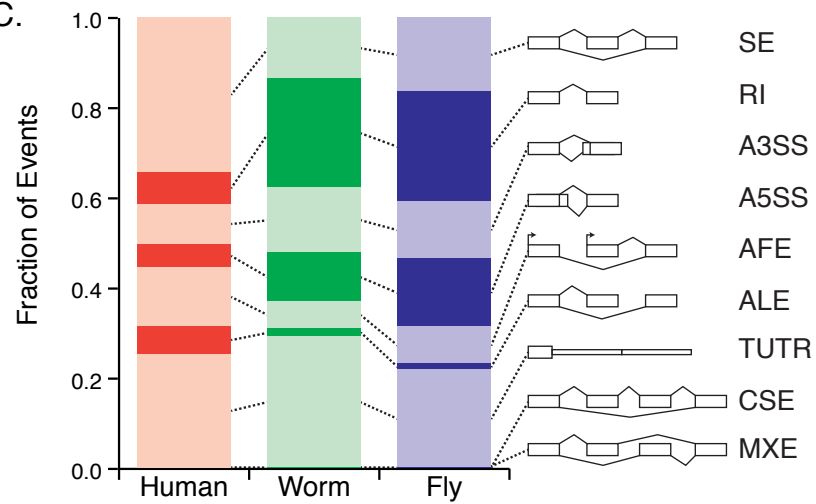
A.



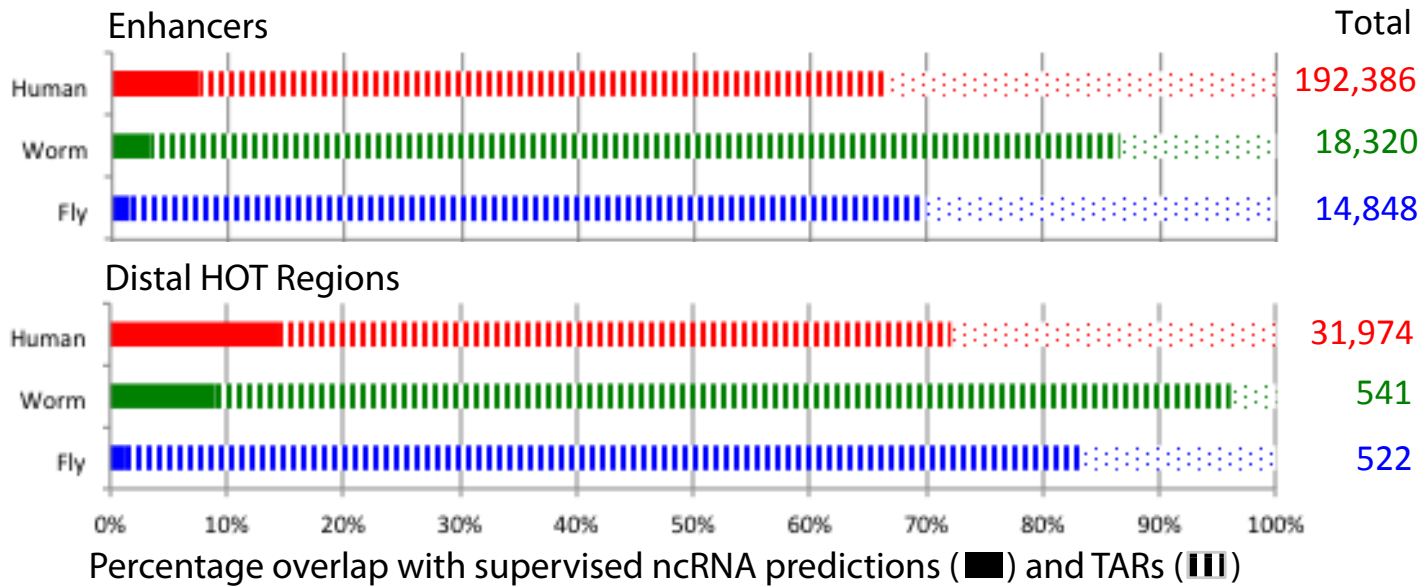
B.



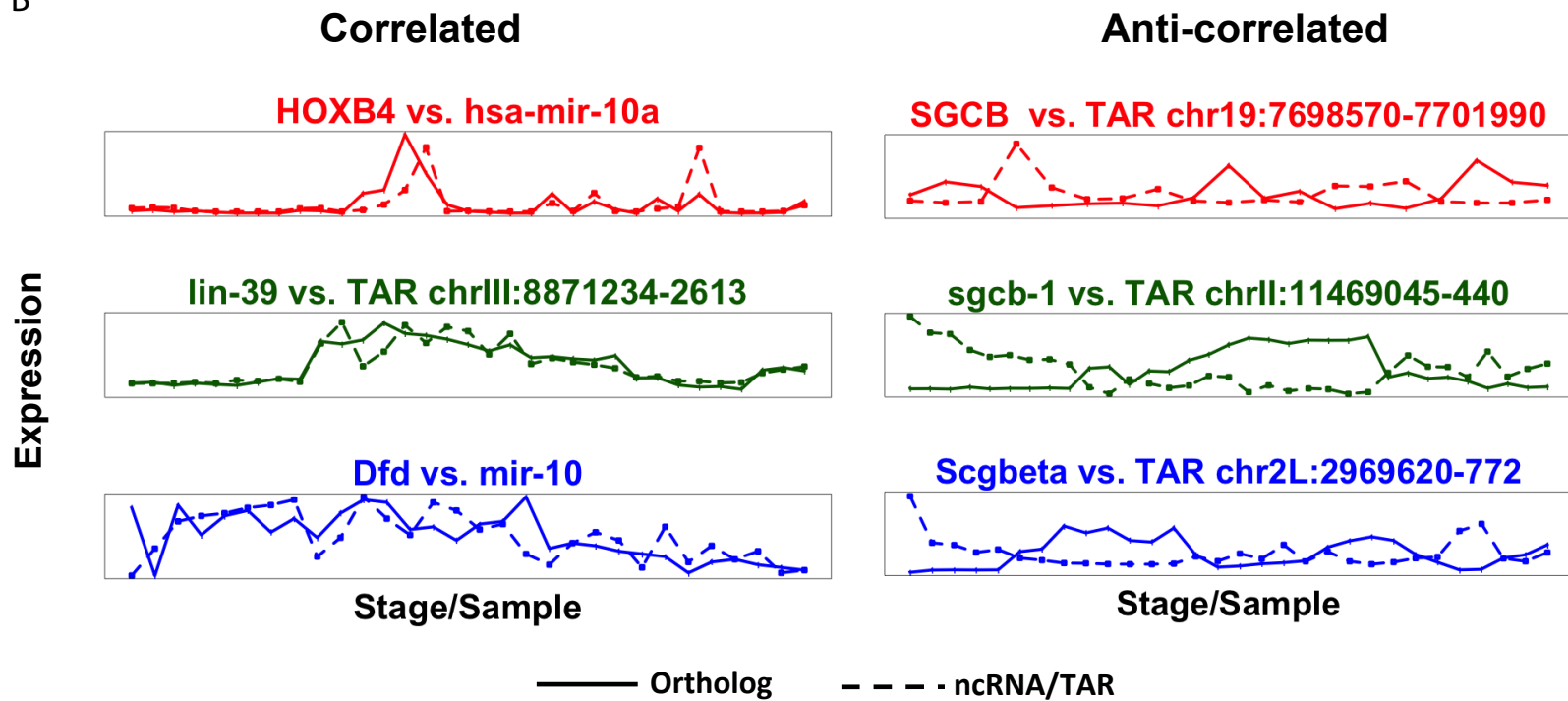
C.

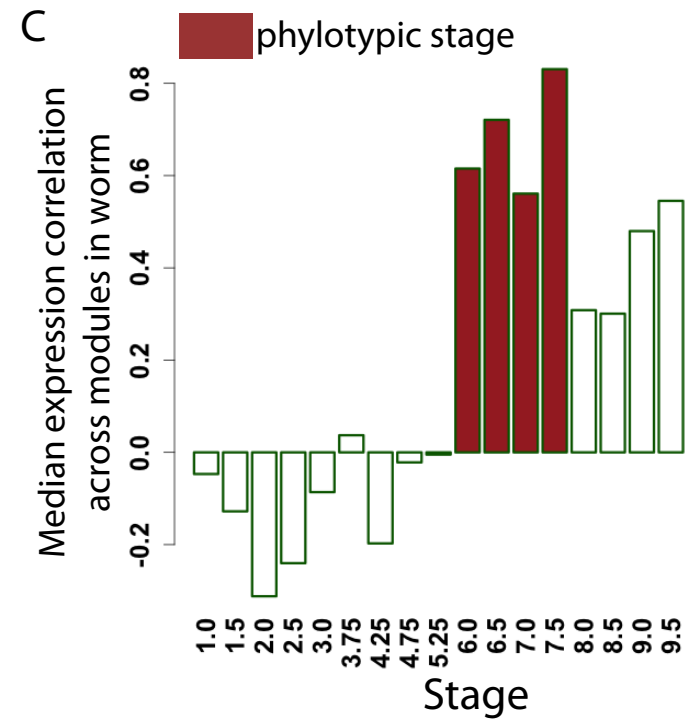
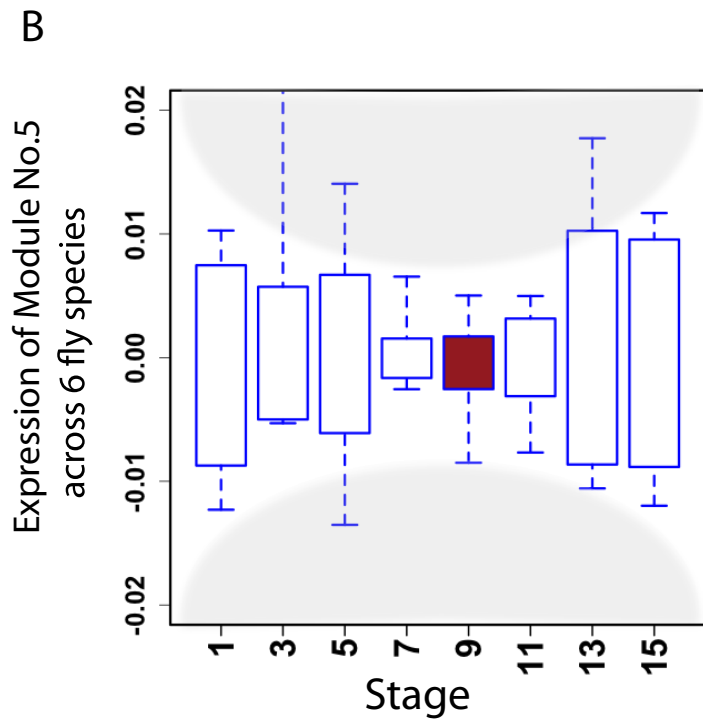
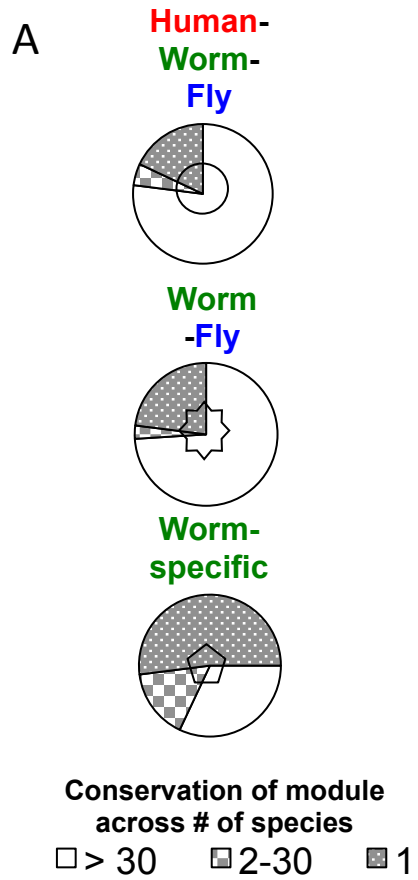


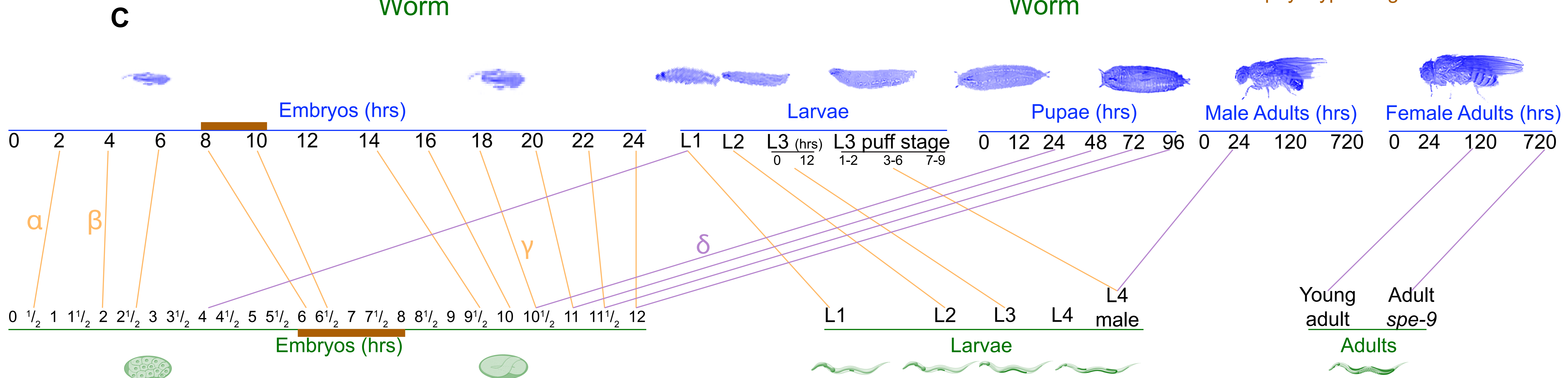
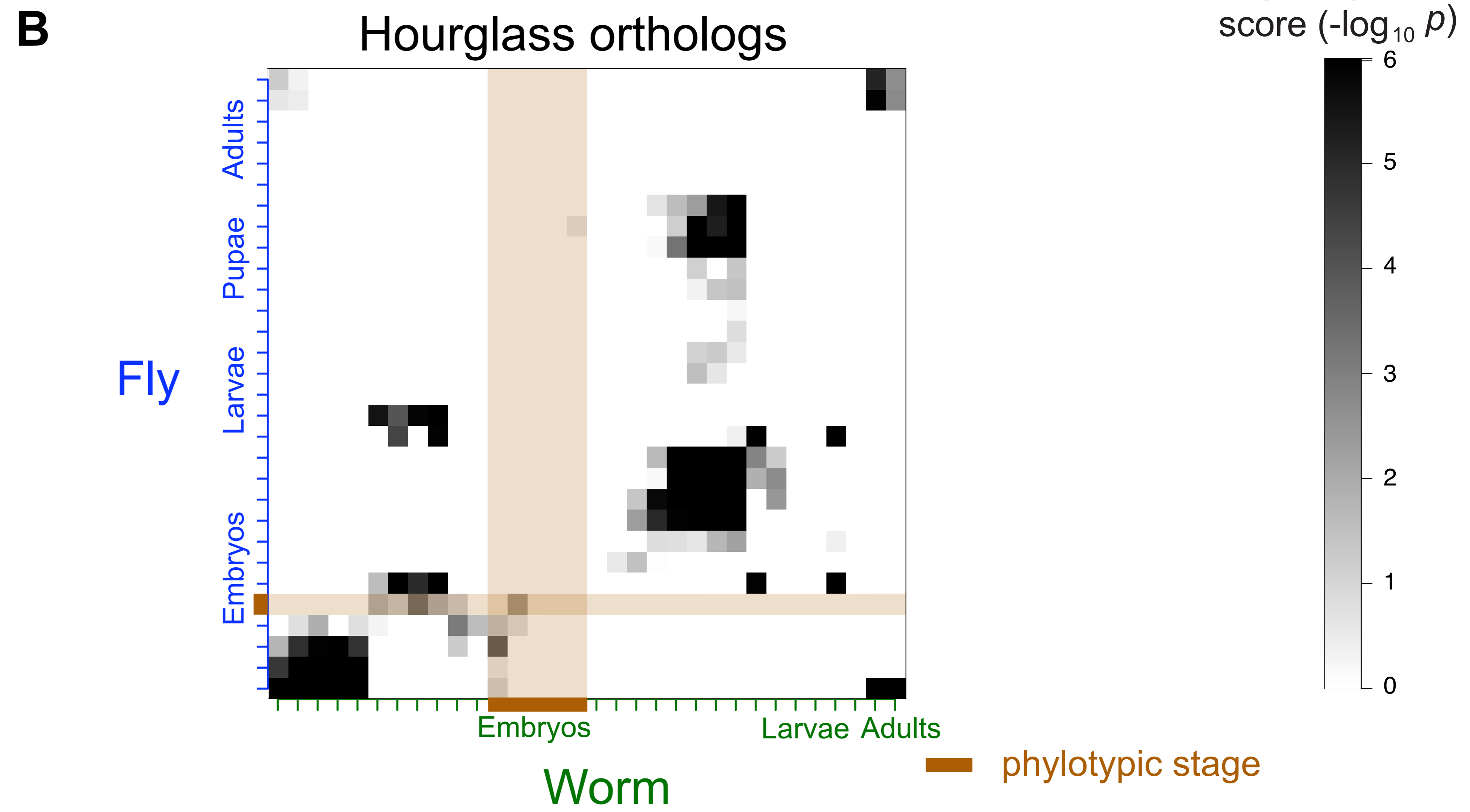
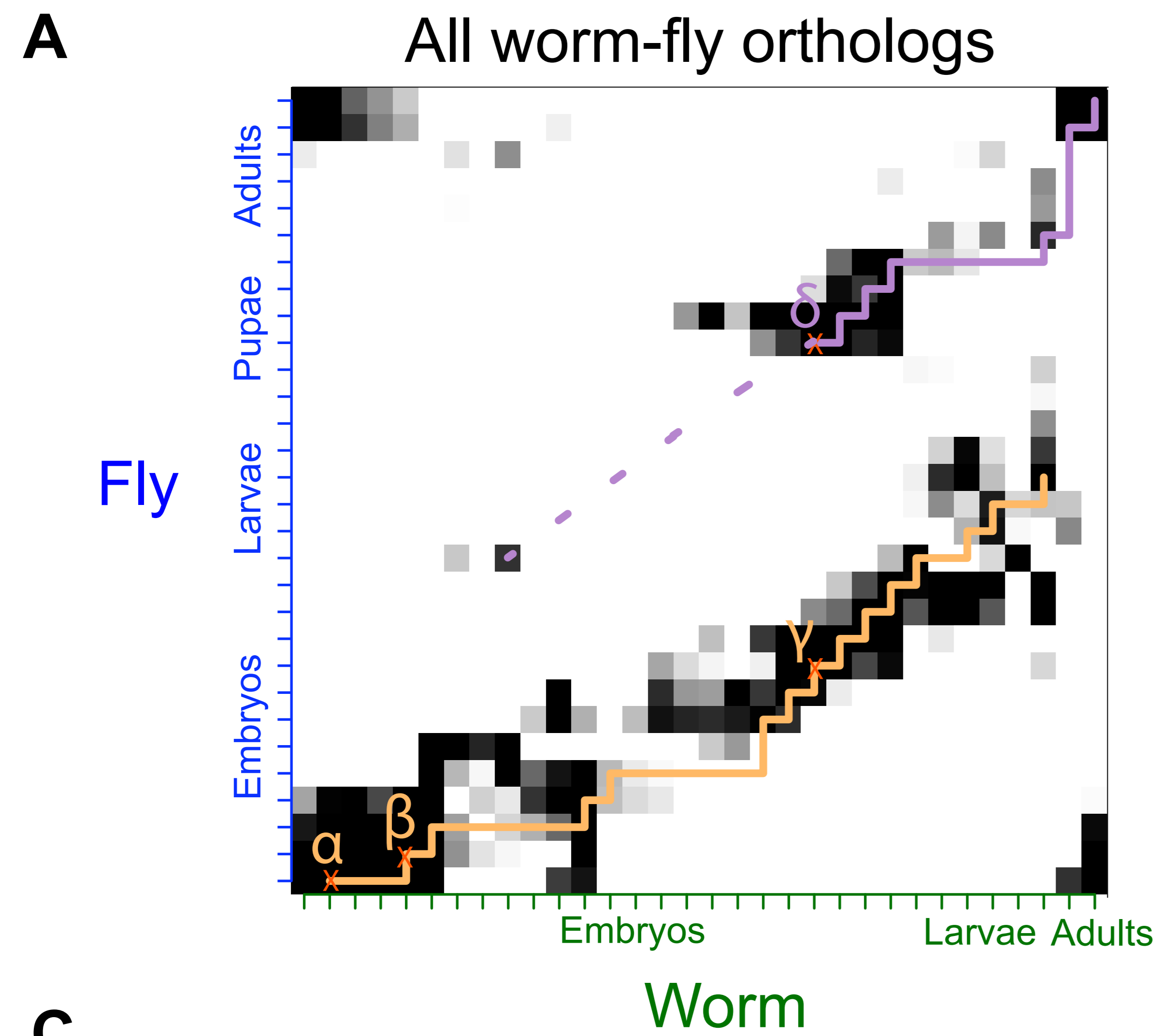
A

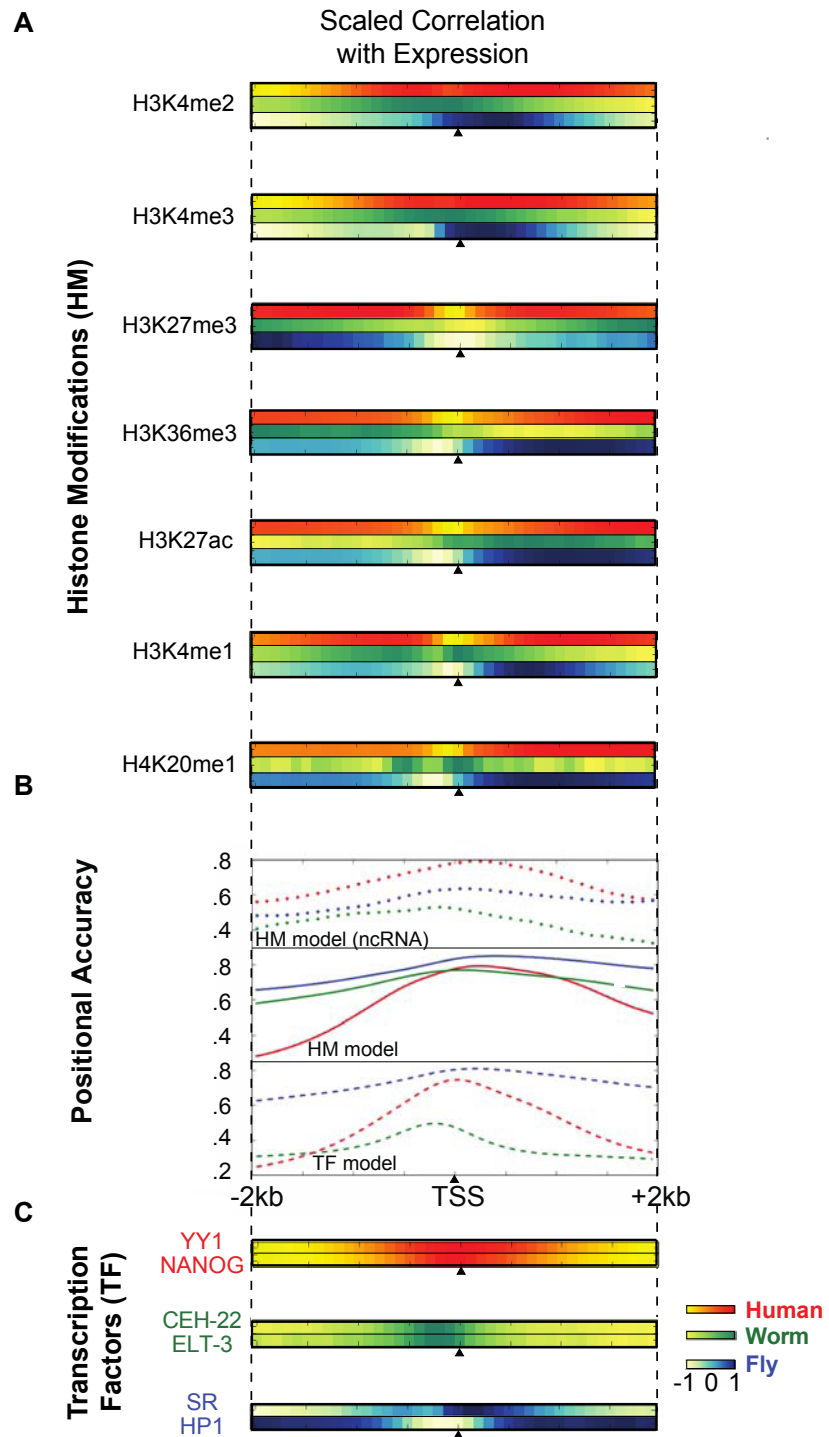


B

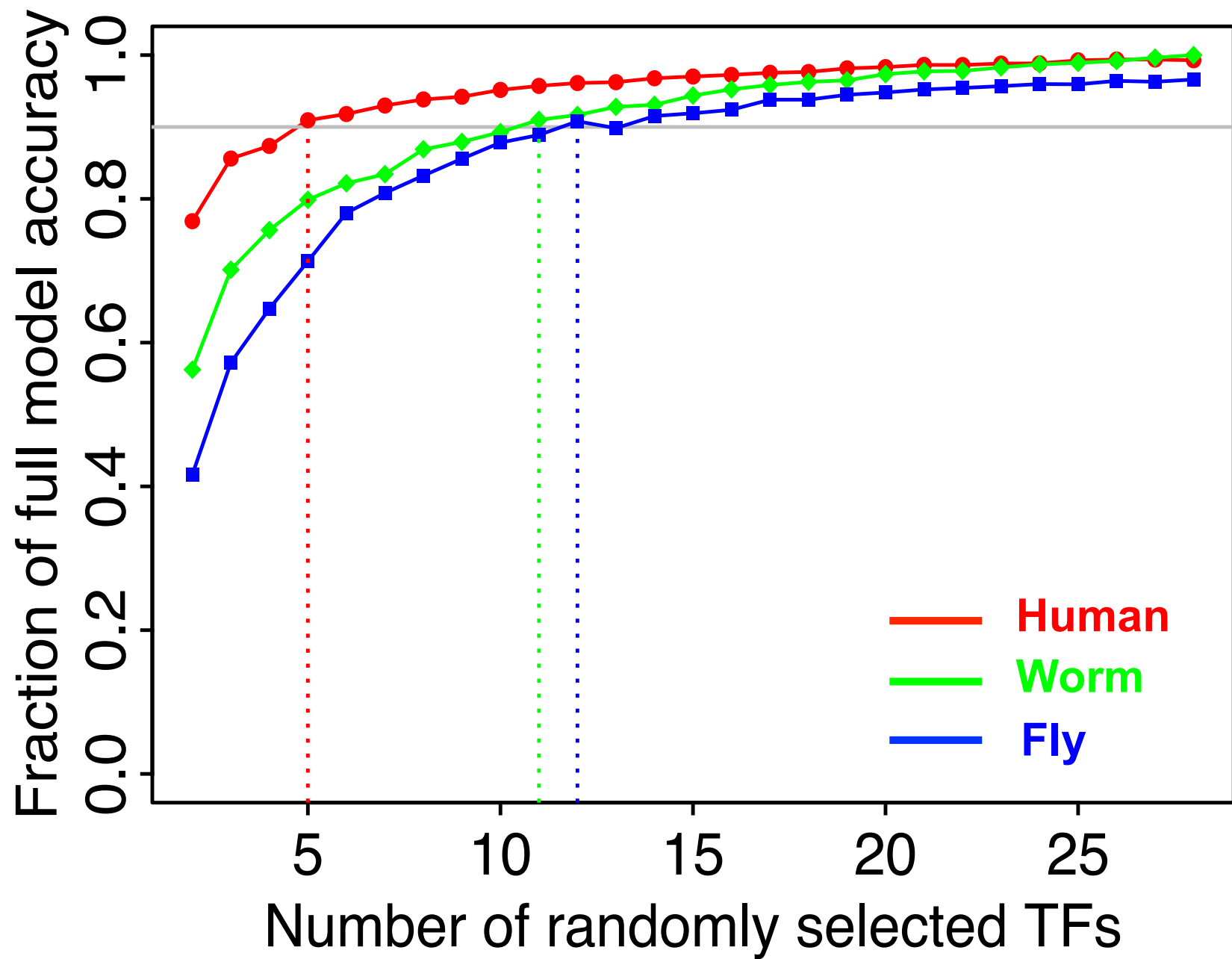








ED Fig. 8



ED Fig. 9