

Fig. 1

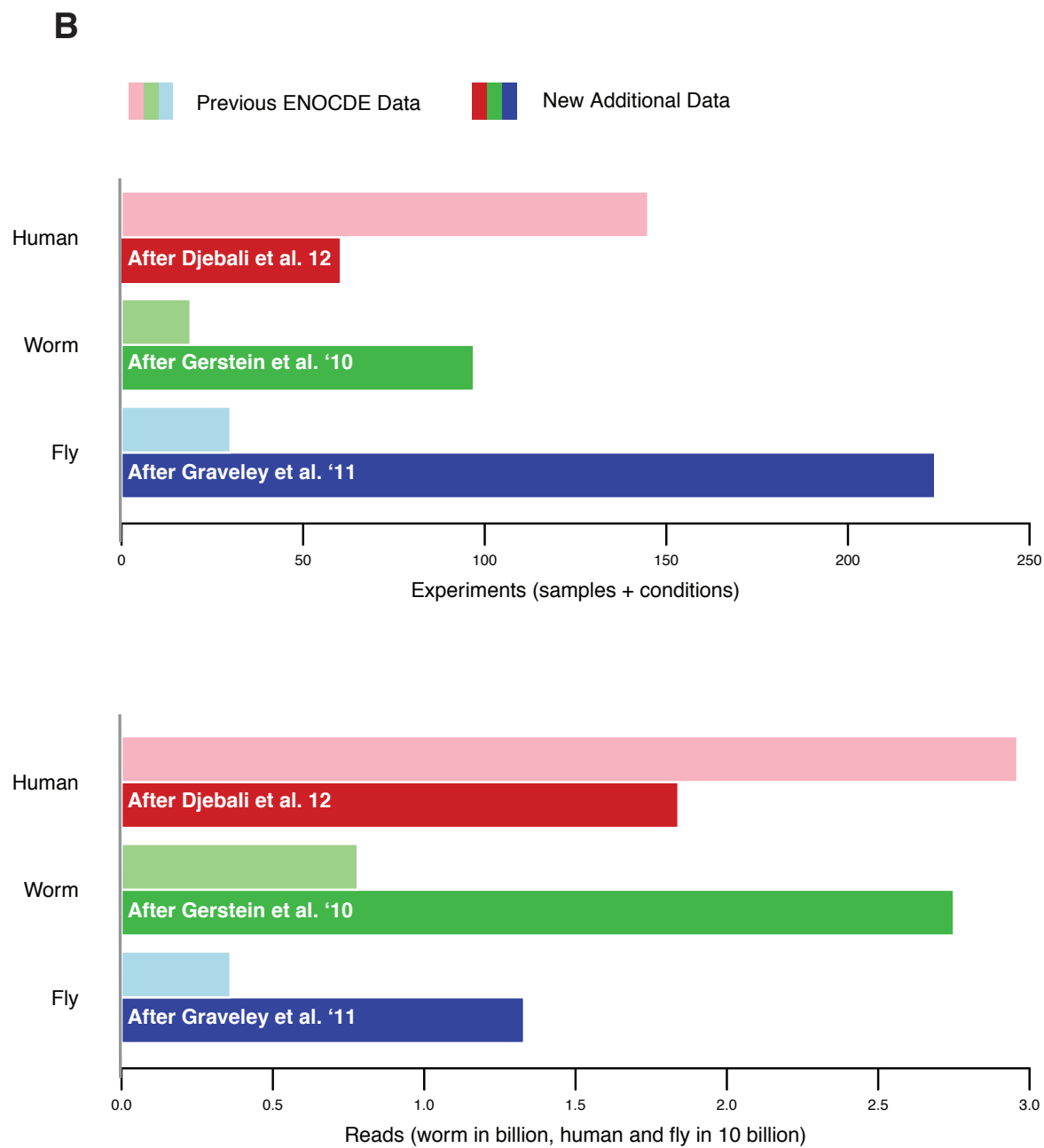
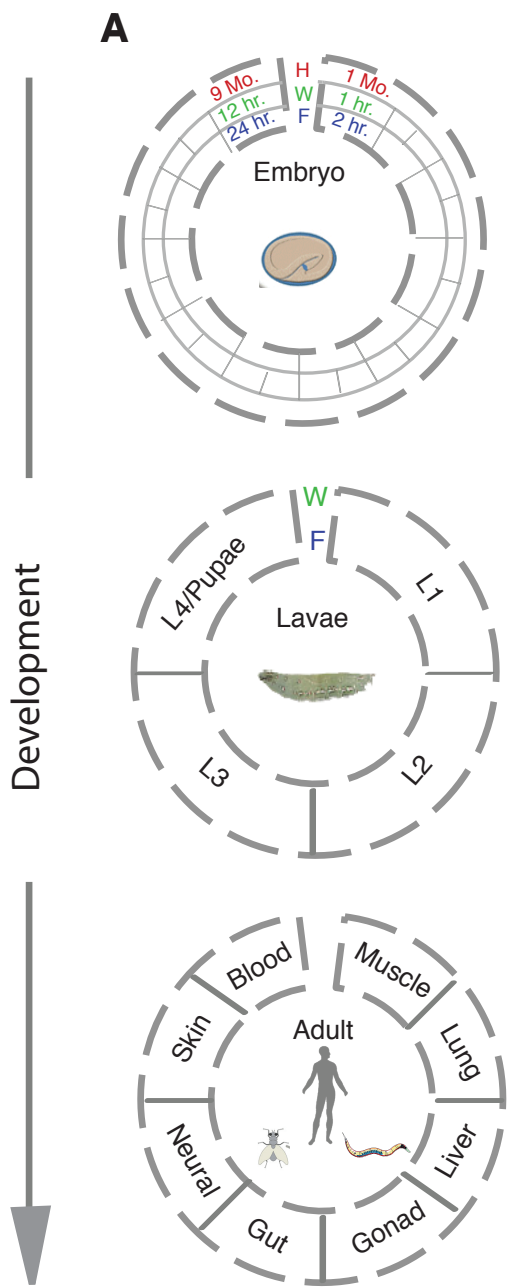


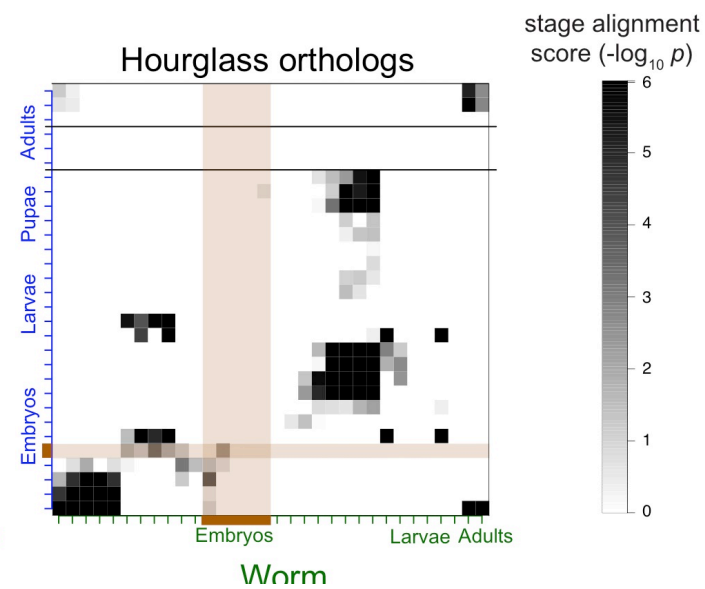
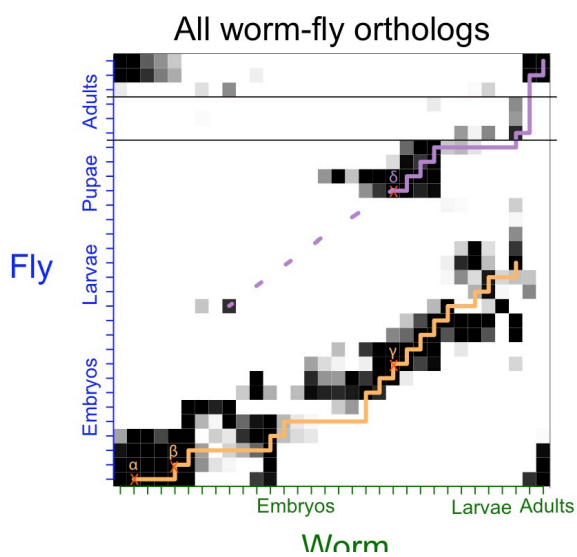
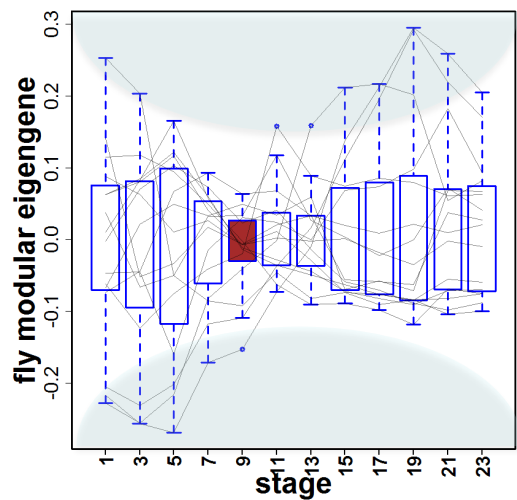
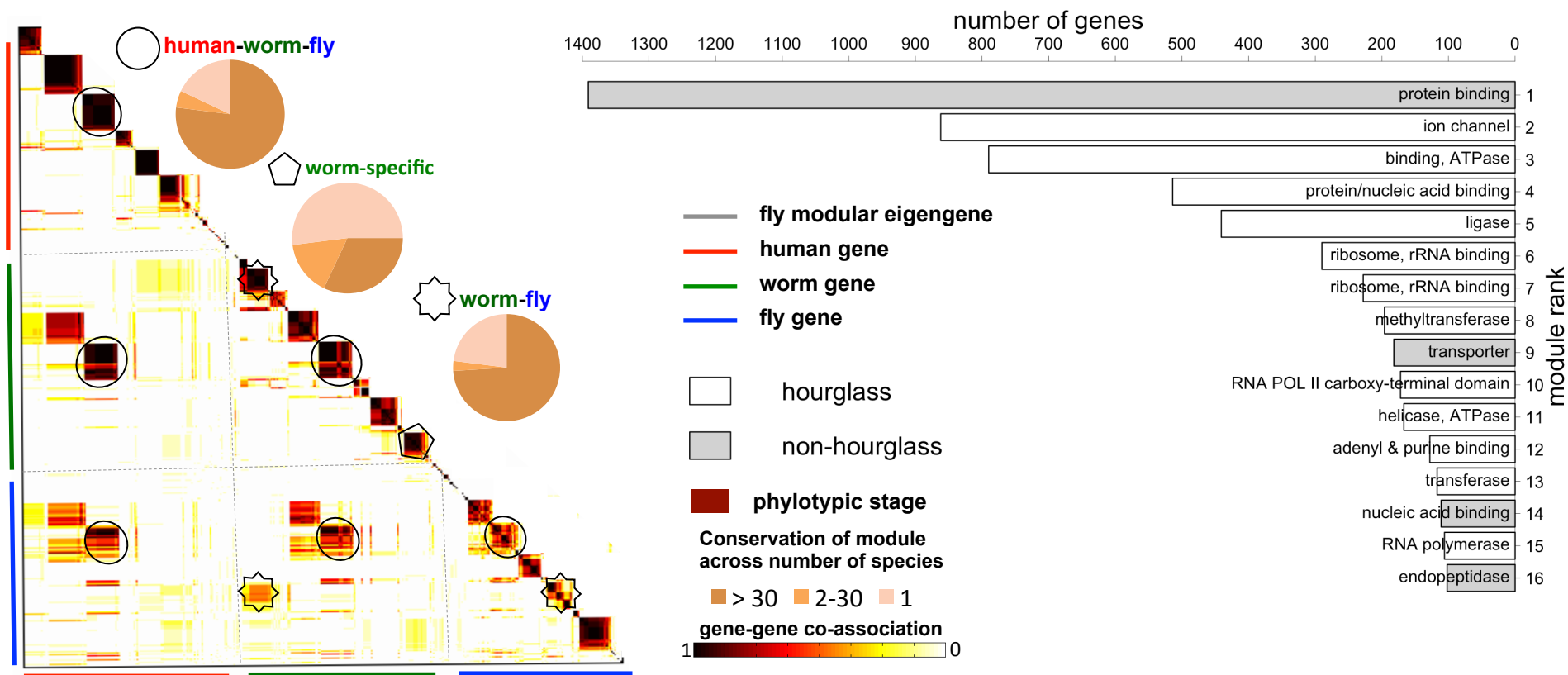
Fig. 1

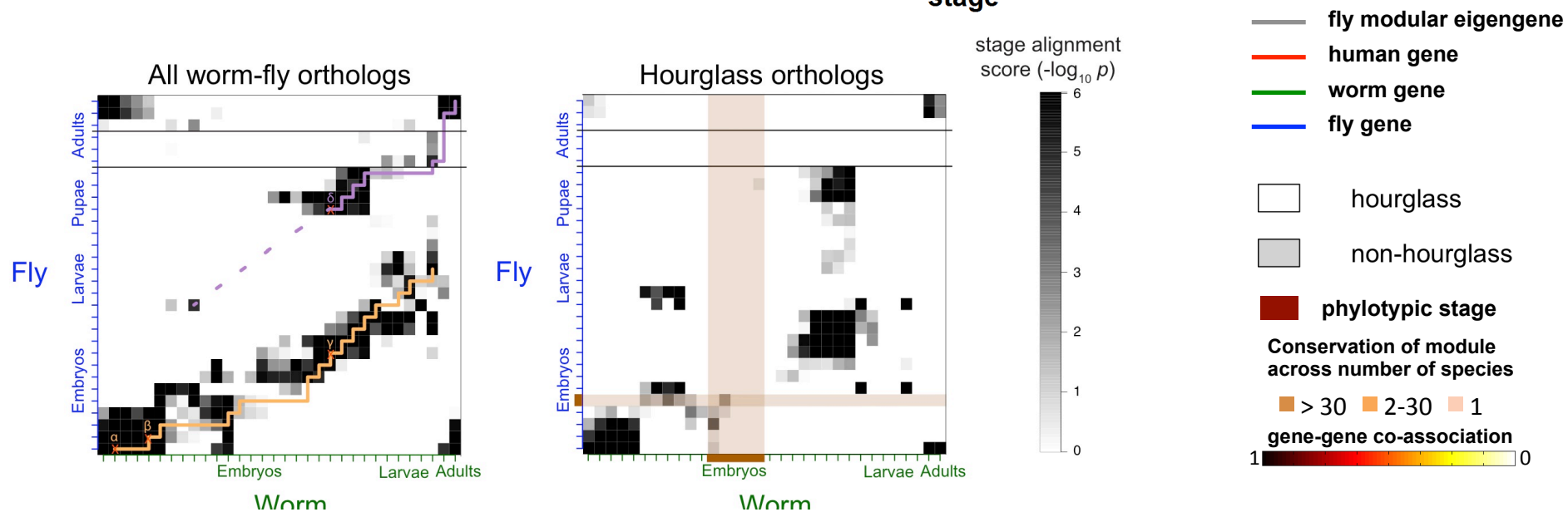
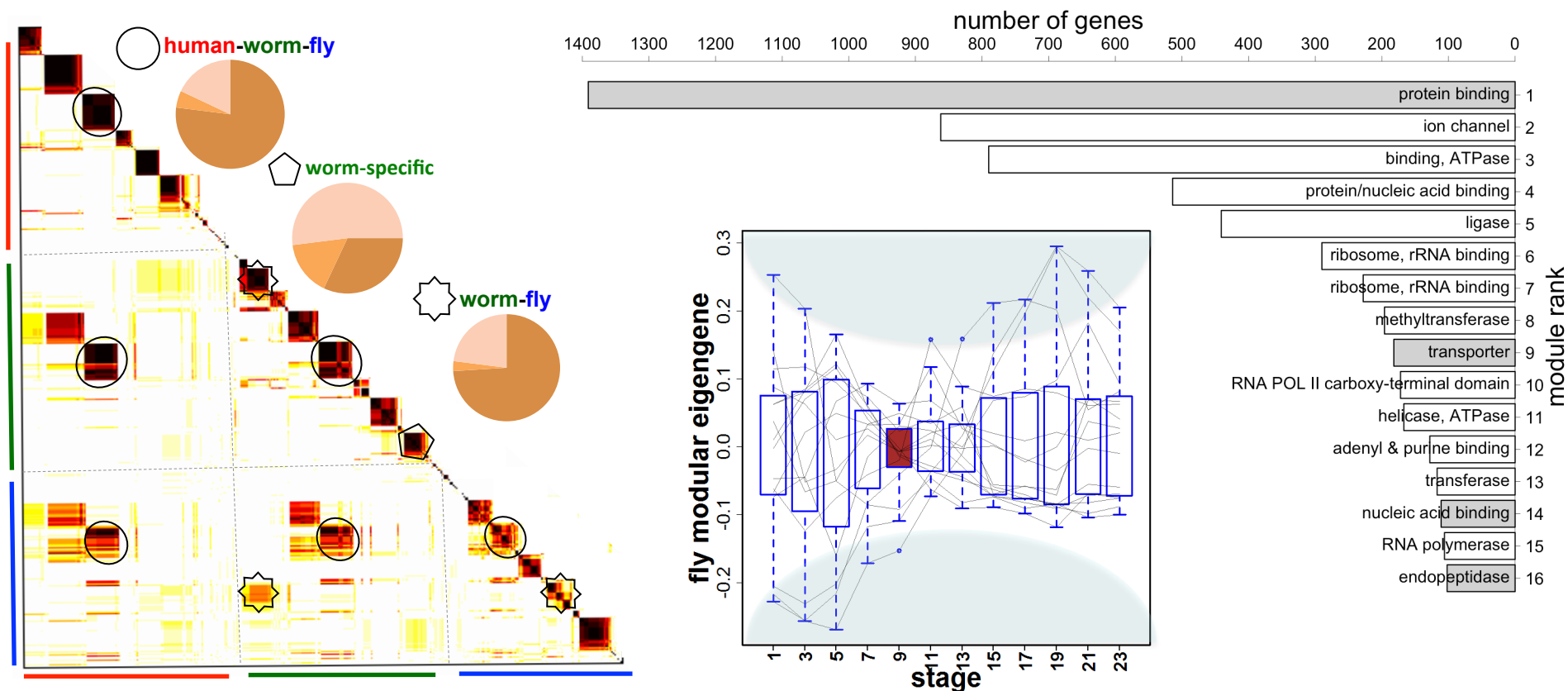
			Human			Worm			Fly			
			Elements	Genome Coverage		Elements	Genome Coverage		Elements	Genome Coverage		
				Kb	%		Kb	%		Kb	%	
Genome	mRNAs (protein coding exons)		20,007	86,560	3.0	21,192	34,437	34.3	13,940	35,970	28.0	
	Pseudogenes		11,216	27,089	0.95	881	1,343	1.3	145	155	0.12	
	Annotated ncRNAs	Comparable ncRNAs	miRNAs	1,756	162	0.006	221	20	0.02	236	22	0.02
			tRNAs	624	47	0.002	609	45	0.04	314	22	0.02
			snoRNAs	1,521	168	0.006	141	16	0.02	287	34	0.03
			snRNAs	1,944	210	0.007	114	14	0.01	47	7	0.006
			lncRNAs	10,840	10,581	0.37	233	184	0.18	852	868	0.68
	Annotated ncRNAs		22,154	17,770	0.62	41,466	2,611	2.6	2,155	3,279	2.6	
	Regions Excluding mRNAs, Pseudogenes or Annotated ncRNAs		283,816	2,731,811	95.5	143,372	63,520	63.3	60,108	89,445	69.6	
	Transcription Detected (TARs)		708,253	916,401	32.0	232,150	37,029	36.9	83,618	44,256	34.5	
Supervised Predictions		104,016	13,835	0.48	2,525	392	0.39	599	164	0.13		

Fig. 2

			Human			Worm			Fly		
			Elements	Genome Coverage		Elements	Genome Coverage		Elements	Genome Coverage	
				Kb	%		Kb	%		Kb	%
mRNAs (protein coding exons)			20,007	86,560	3.0	21,192	34,437	34.3	13,940	35,970	28.0
Pseudogenes			11,216	27,089	0.95	881	1,343	1.3	145	155	0.12
Annotated ncRNAs	Comparable ncRNAs	miRNAs	1,756	162	0.006	221	20	0.02	236	22	0.02
		tRNAs	624	47	0.002	609	45	0.04	314	22	0.02
		snoRNAs	1,521	168	0.006	141	16	0.02	287	34	0.03
		snRNAs	1,944	210	0.007	114	14	0.01	47	7	0.006
		lncRNAs	10,840	10,581	0.37	233	184	0.18	852	868	0.68
	Annotated ncRNAs			22,154	17,770	0.62	41,466	2,611	2.6	2,155	3,279
Regions Excluding mRNAs, Pseudogenes or Annotated ncRNAs			283,816	2,731,811	95.5	143,372	63,520	63.3	60,108	89,445	69.6
Transcription Detected (TARs)			708,253	916,401	32.0	232,150	37,029	36.9	83,618	44,256	34.5
Supervised Predictions			104,016	13,835	0.48	2,525	392	0.39	599	164	0.13

Fig. 2





Module	Worm	Fly	Human	Rank (# of genes)	1-1-1 orthologs	ncRNAs (cor+anti-cor)			TARs (cor+anti-cor)		
						Human	Worm	Fly	Human	Worm	Fly
1	336	346	709	1	37	401+85	27+24	455+203	329+457	1726+188	253+300
2*	158	159	197	4	58	804+148	5+14	237+189	954+216	43+969	131+992
3*	65	65	66	8	45	549+24	14+14	190+173	217+325	10+1578	36+965
4*	133	132	176	5	54	474+261	12+26	197+238	429+430	53+743	75+780
5*	262	222	378	2	29	675+39	30+18	260+64	281+95	1333+216	652+72
6*	55	52	65	10	25	634+46	14+22	109+139	634+216	30+4422	64+1184
7*	269	253	268	3	135	1002+66	16+28	228+243	2229+582	137+4724	178+1940
8	35	37	30	16	17	86+28	18+13	40+43	55+112	3+3707	3+166
9*	94	96	100	6	51	657+16	16+1	131+64	123+184	3+229	1+55
10*	39	33	34	15	25	471+21	12+14	170+154	235+682	33+2116	30+1000
11*	37	41	39	13	29	302+17	11+10	154+201	143+201	1+480	26+1251
12*	42	38	48	12	19	185+5	7+20	79+185	522+25	23+3450	67+1513
13*	75	80	73	7	17	607+15	13+17	160+203	422+362	2+1086	2+571
14	63	47	72	9	10	138+6	21+15	150+52	23+392	1147+65	4+249
15	41	38	32	14	18	159+6	7+21	104+115	189+53	34+2987	56+898
16*	56	58	53	11	42	702+12	7+6	167+182	219+74	8+447	40+1027

Module	Protein-coding genes			Rank (# of genes)	1-1-1 orthologs	ncRNAs (cor+anti-cor)			TARs (cor+anti-cor)		
	Human	Worm	Fly			Human	Worm	Fly	Human	Worm	Fly
1	336	346	709	1	37	401+85	27+24	455+203	329+457	1726+188	253+300
2*	158	159	197	4	58	804+148	5+14	237+189	954+216	43+969	131+992
3*	65	65	66	8	45	549+24	14+14	190+173	217+325	10+1578	36+965
4*	133	132	176	5	54	474+261	12+26	197+238	429+430	53+743	75+780
5*	262	222	378	2	29	675+39	30+18	260+64	281+95	1333+216	652+72
6*	55	52	65	10	25	634+46	14+22	109+139	634+216	30+4422	64+1184
7*	269	253	268	3	135	1002+66	16+28	228+243	2229+582	137+4724	178+1940
8	35	37	30	16	17	86+28	18+13	40+43	55+112	3+3707	3+166
9*	94	96	100	6	51	657+16	16+1	131+64	123+184	3+229	1+55
10*	39	33	34	15	25	471+21	12+14	170+154	235+682	33+2116	30+1000
11*	37	41	39	13	29	302+17	11+10	154+201	143+201	1+480	26+1251
12*	42	38	48	12	19	185+5	7+20	79+185	522+25	23+3450	67+1513
13*	75	80	73	7	17	607+15	13+17	160+203	422+362	2+1086	2+571
14	63	47	72	9	10	138+6	21+15	150+52	23+392	1147+65	4+249
15	41	38	32	14	18	159+6	7+21	104+115	189+53	34+2987	56+898
16*	56	58	53	11	42	702+12	7+6	167+182	219+74	8+447	40+1027

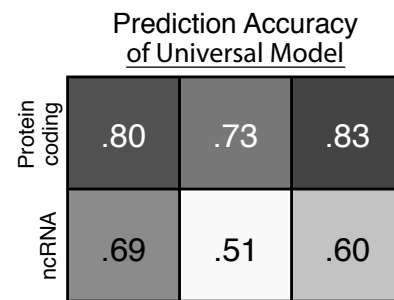
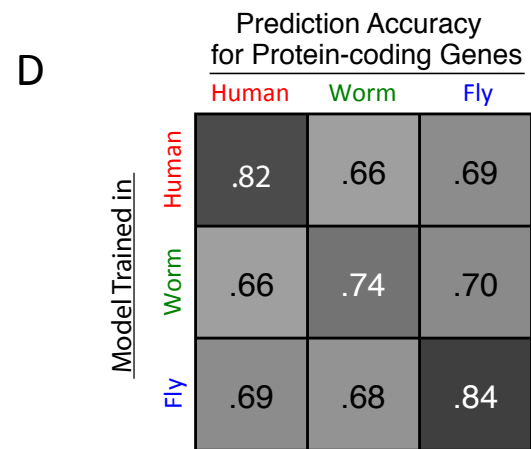
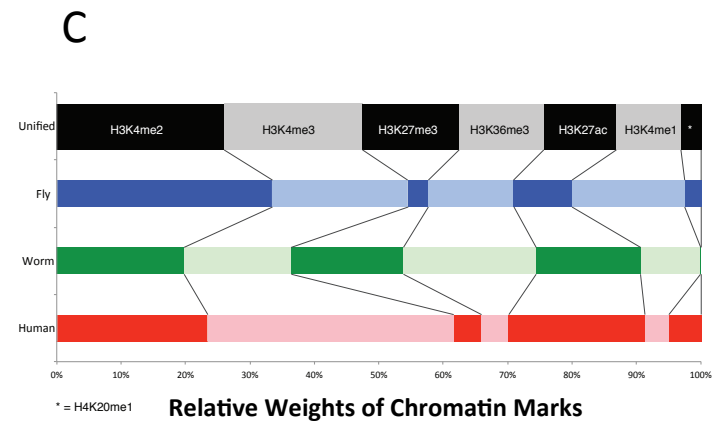
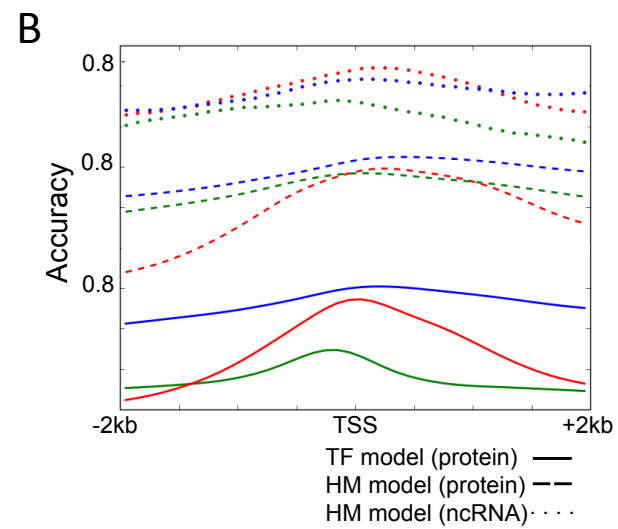
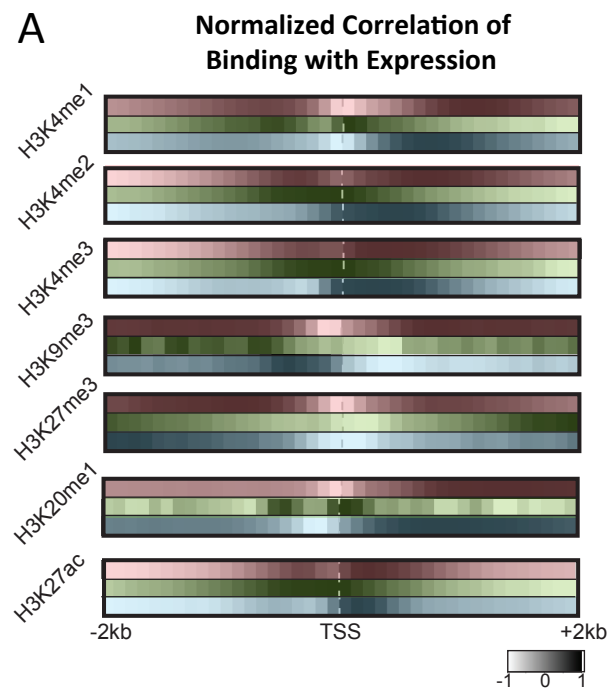


Fig. 4