

available data types

ShortTotal : all RNAs < 200 nt

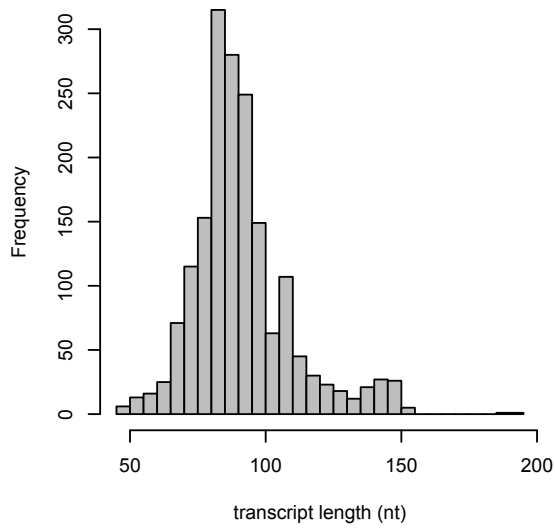
*LongTotal : all RNAs > 200 nt

LongPolyA : polyA+ RNAs > 200 nt

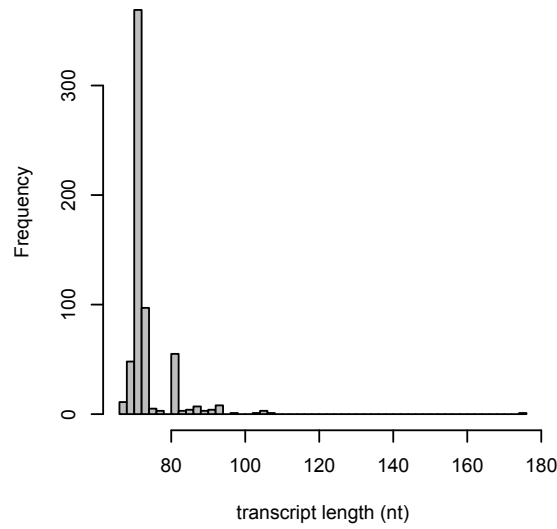
LongPolyAminus : polyA- RNAs > 200 nt

human ncRNA sizes

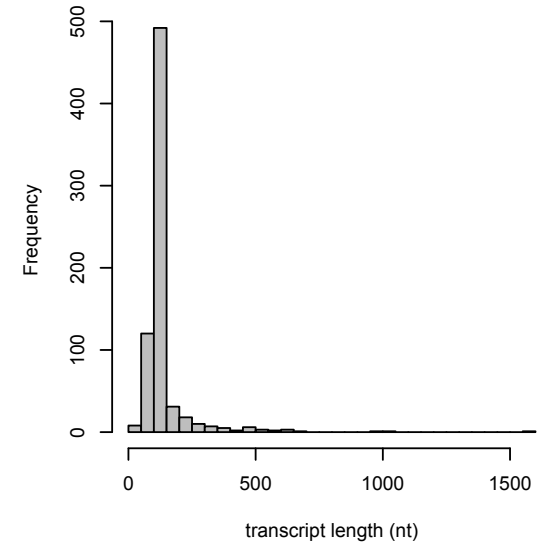
miRNA



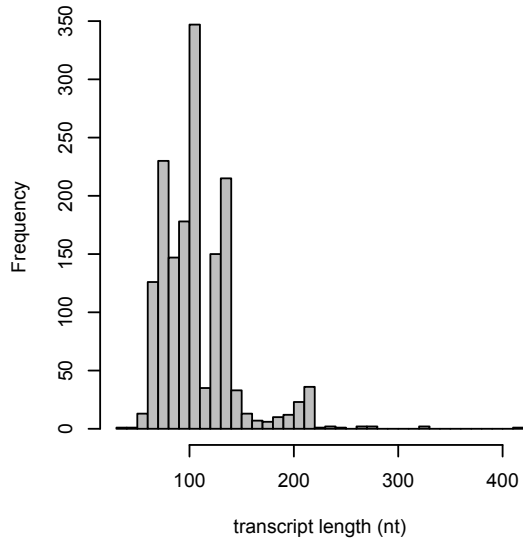
tRNA



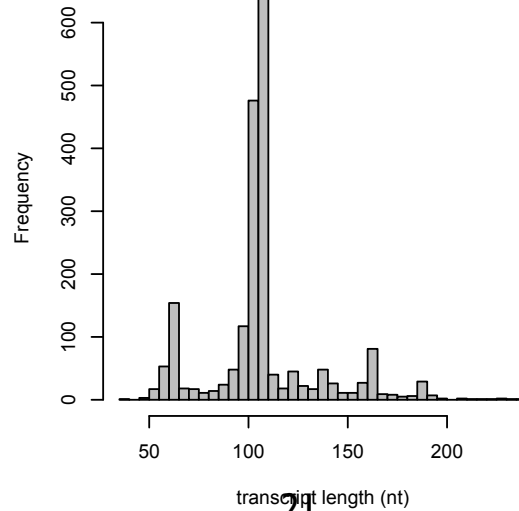
rRNA



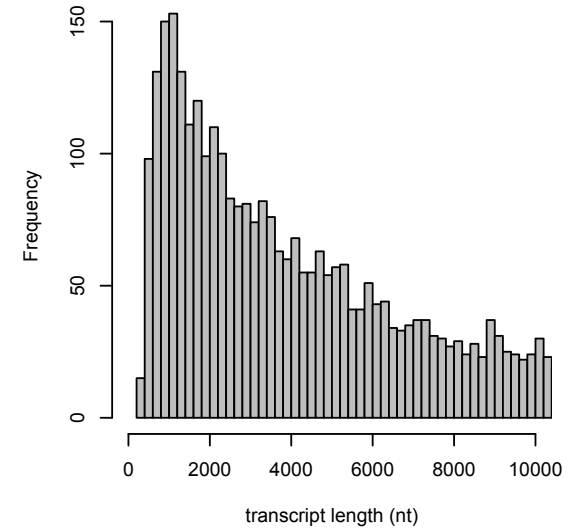
snoRNA



snRNA

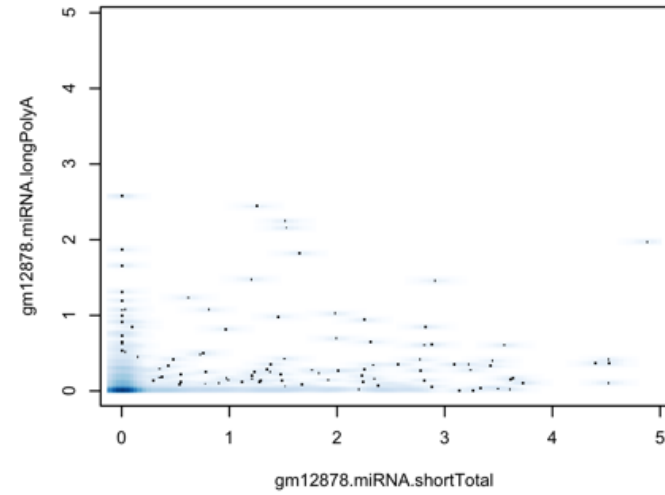


lincRNA

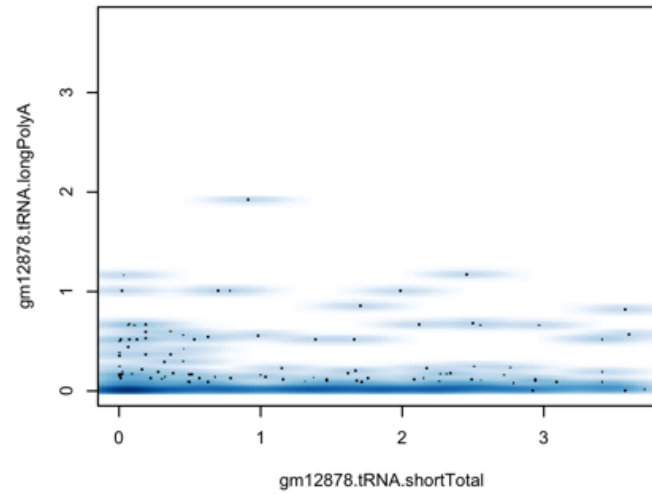


GM12878

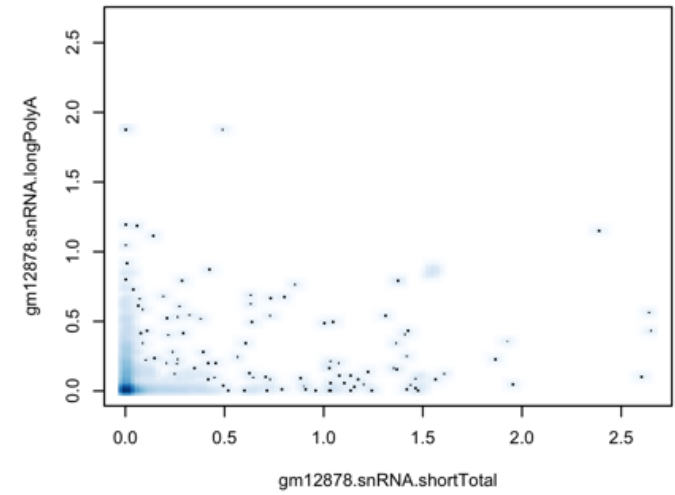
correlation = 0.206



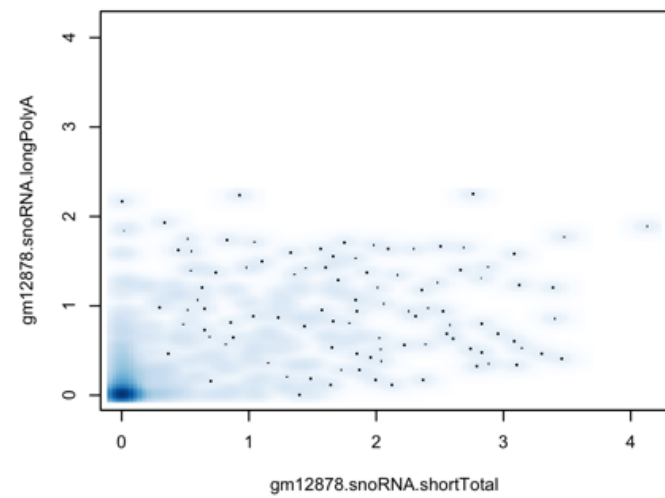
correlation = -0.045



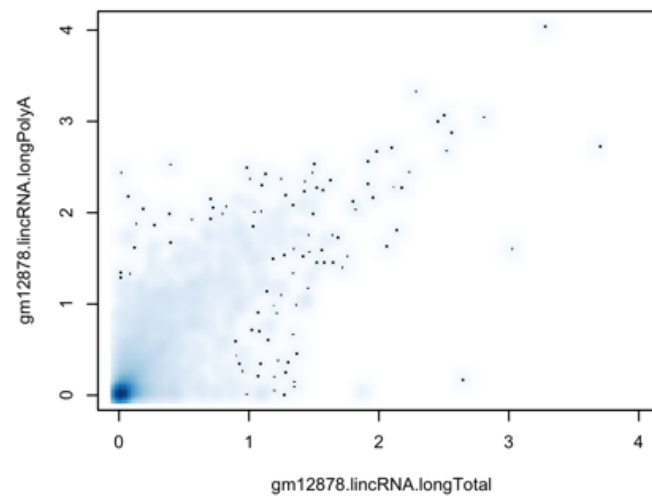
correlation = 0.249



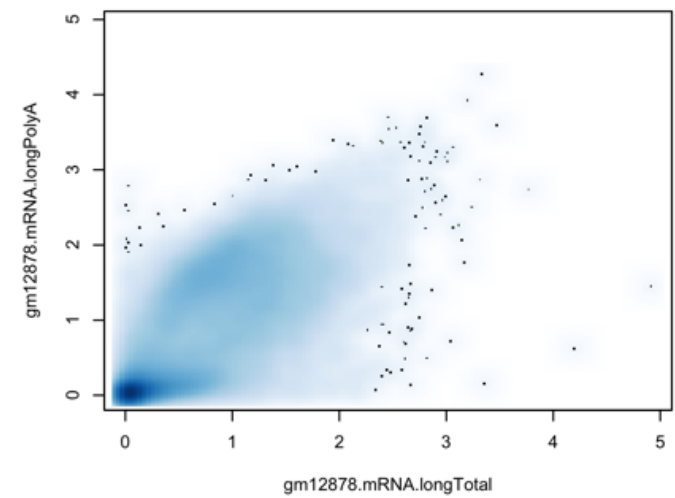
correlation = 0.611



correlation = 0.772

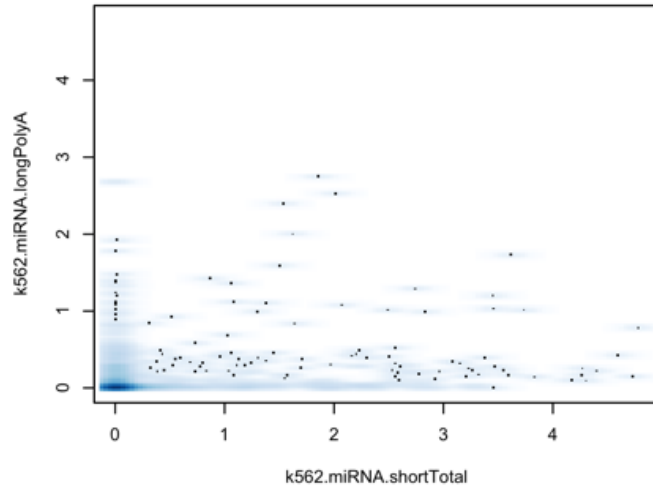


correlation = 0.716

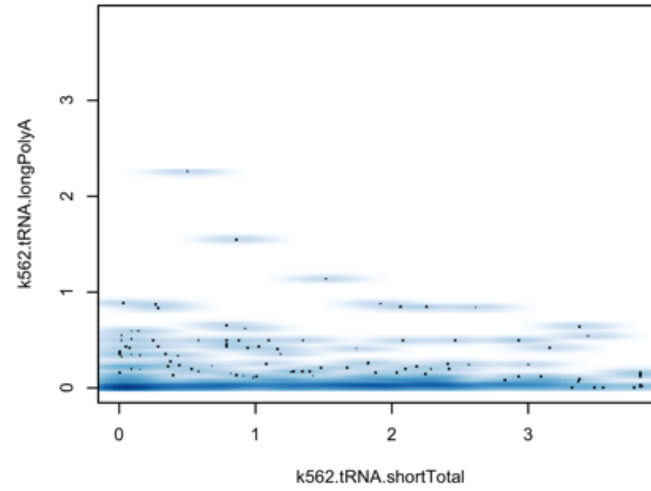


K562

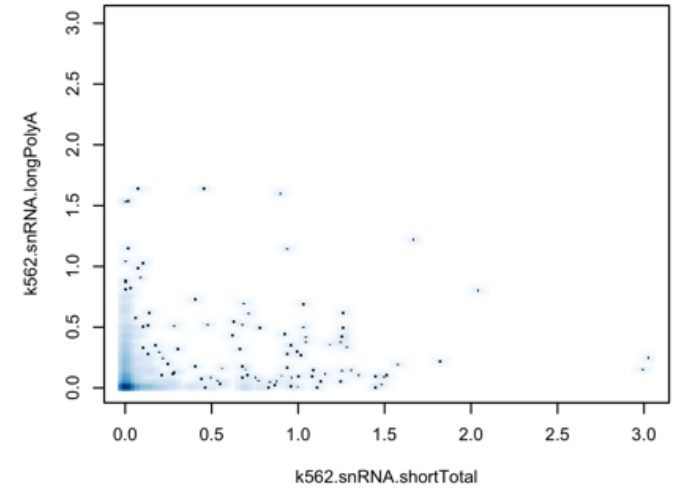
correlation = 0.213



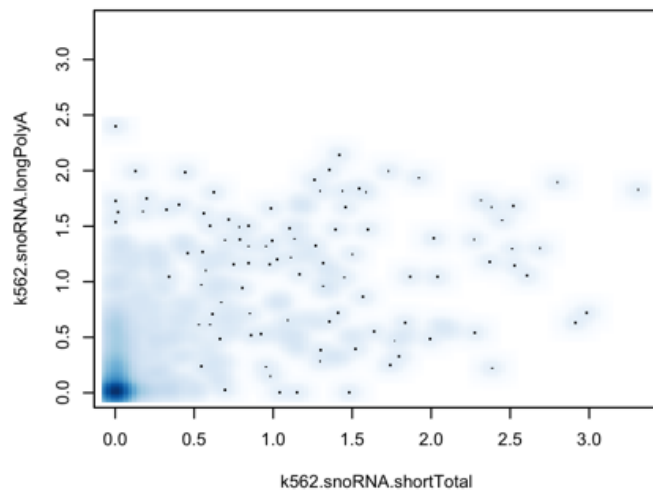
correlation = -0.057



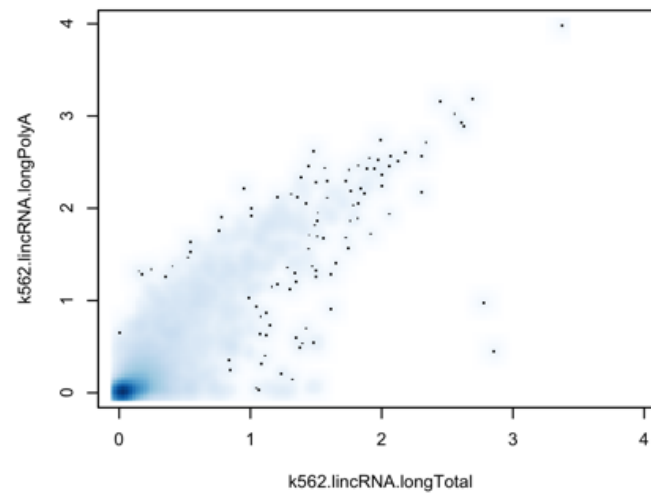
correlation = 0.191



correlation = 0.614



correlation = 0.86



correlation = 0.796

