

# Unannotated Transcription Update

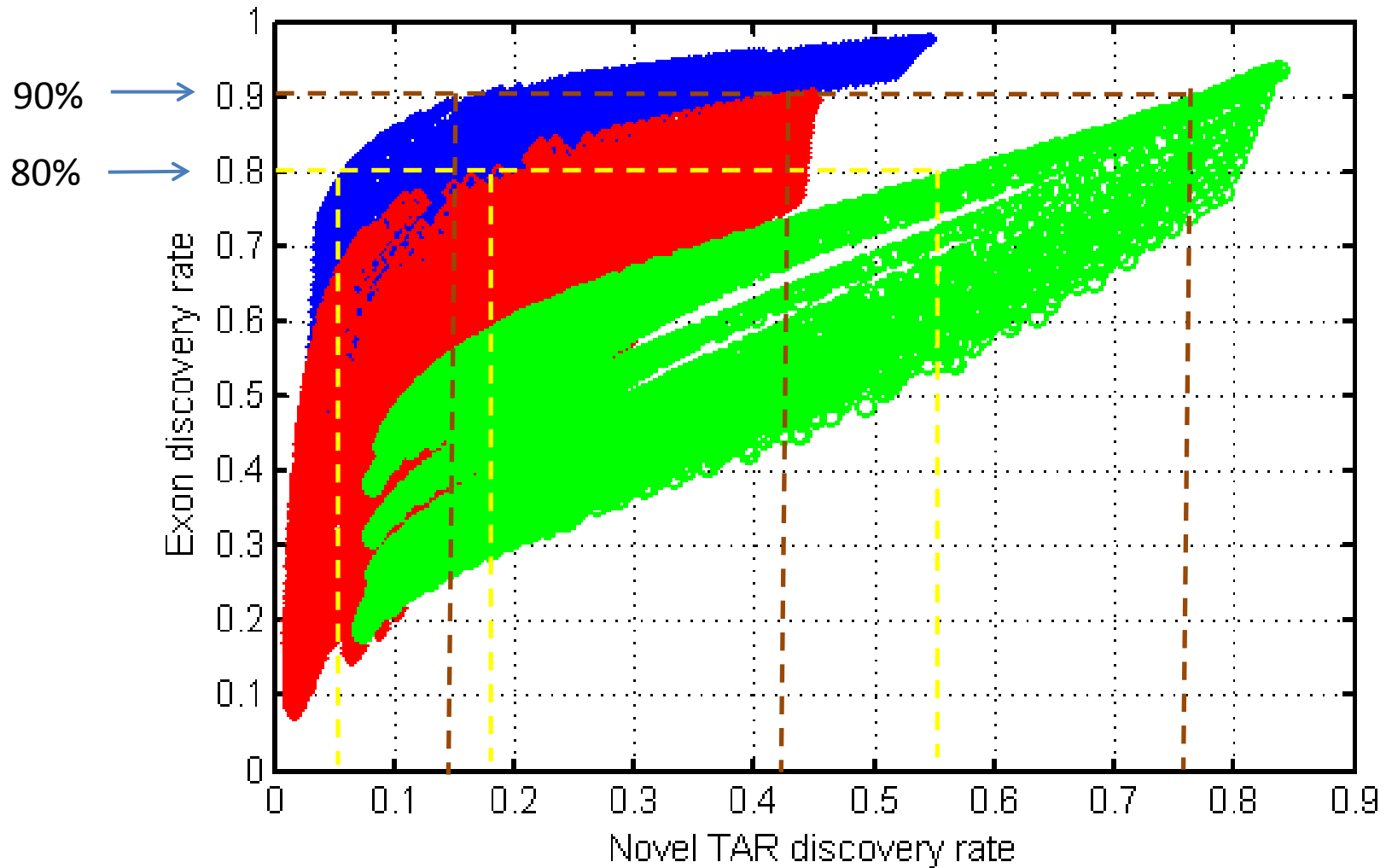
Arif Harmanci

Gerstein Lab

# Datasets

- Updated Fly dashboard listed datasets
  - em0-2hr: SRR023663.fastq SRR023671.fastq SRR023747.fastq
  - em2-4hr: SRR023660.fastq SRR023705.fastq
  - em4-6hr: SRR023669.fastq SRR023696.fastq SRR023746.fastq SRR023836.fastq SRR035220.fastq
  - em6-8hr: SRR023654.fastq SRR023668.fastq SRR023688.fastq
  - em8-10hr: SRR023701.fastq SRR023749.fastq SRR023750.fastq SRR023759.fastq
  - em10-12hr: SRR023644.fastq SRR023694.fastq SRR023727.fastq SRR023831.fastq SRR024221.fastq
  - em12-14hr: SRR023643.fastq SRR023703.fastq SRR023724.fastq SRR023832.fastq SRR035221.fastq
  - em14-16hr: SRR023641.fastq SRR023725.fastq SRR023734.fastq SRR023736.fastq SRR023822.fastq
  - em16-18hr: SRR023707.fastq SRR023715.fastq SRR023720.fastq SRR023751.fastq SRR023826.fastq
  - em18-20hr: SRR023682.fastq SRR023699.fastq SRR023700.fastq SRR035222.fastq
  - em20-22hr: SRR023665.fastq SRR023728.fastq
  - em22-24hr: SRR023685.fastq SRR023711.fastq SRR023733.fastq SRR023834.fastq
  - L1: SRR023646.fastq SRR023706.fastq SRR023835.fastq
  - L2: SRR023670.fastq SRR023719.fastq SRR023761.fastq SRR023824.fastq SRR035223.fastq
  - L3\_12hr: SRR023677.fastq SRR023760.fastq
  - L3\_PS1-2: SRR023638.fastq SRR023640.fastq SRR023758.fastq
  - L3\_PS3-6: SRR023683.fastq SRR023692.fastq SRR023742.fastq
  - L3\_PS7-9: SRR023729.fastq SRR023739.fastq SRR023782.fastq SRR023865.fastq SRR035219.fastq
  - WPP: SRR023687.fastq SRR023695.fastq SRR023704.fastq SRR023784.fastq SRR023837.fastq SRR035217.fastq
  - WPP\_12hr: SRR023639.fastq SRR023689.fastq SRR023833.fastq
  - WPP\_24hr: SRR023656.fastq SRR023708.fastq SRR023756.fastq SRR023830.fastq
  - WPP\_2days: SRR023667.fastq SRR023721.fastq SRR023829.fastq
  - WPP\_3days: SRR023738.fastq SRR023748.fastq SRR024216.fastq SRR035218.fastq
  - WPP\_4days: SRR023653.fastq SRR023740.fastq SRR023827.fastq
- Todo: add adult samples:
  - Adult

# Novel TAR Disc. Rate vs Exon Disc. Rate



# Genome-Wide Transcription (Coverage percentage)

	Exon Coverage					
	80%			90%		
	Total	Ann.	Unann.	Total	Ann.	Unann.
Worm	32.1Mb (32%)	23.5Mb (23.5%)	8.5Mb (8.5%)	32.4Mb (32.2%)	23.4Mb (23.2%)	9Mb (9.0%)
Fly	28Mb (21.4%)	25.6Mb (19.5%)	2.4Mb (1.9%)	37.3Mb (28.8%)	28.6Mb (22.1%)	8.7Mb (6.7%)
Human	216 Mb (7.1%)	68 Mb (2.2%)	148 Mb (4.9%)	533Mb (17.5%)	77Mb (2.5%)	456Mb (15.0%)