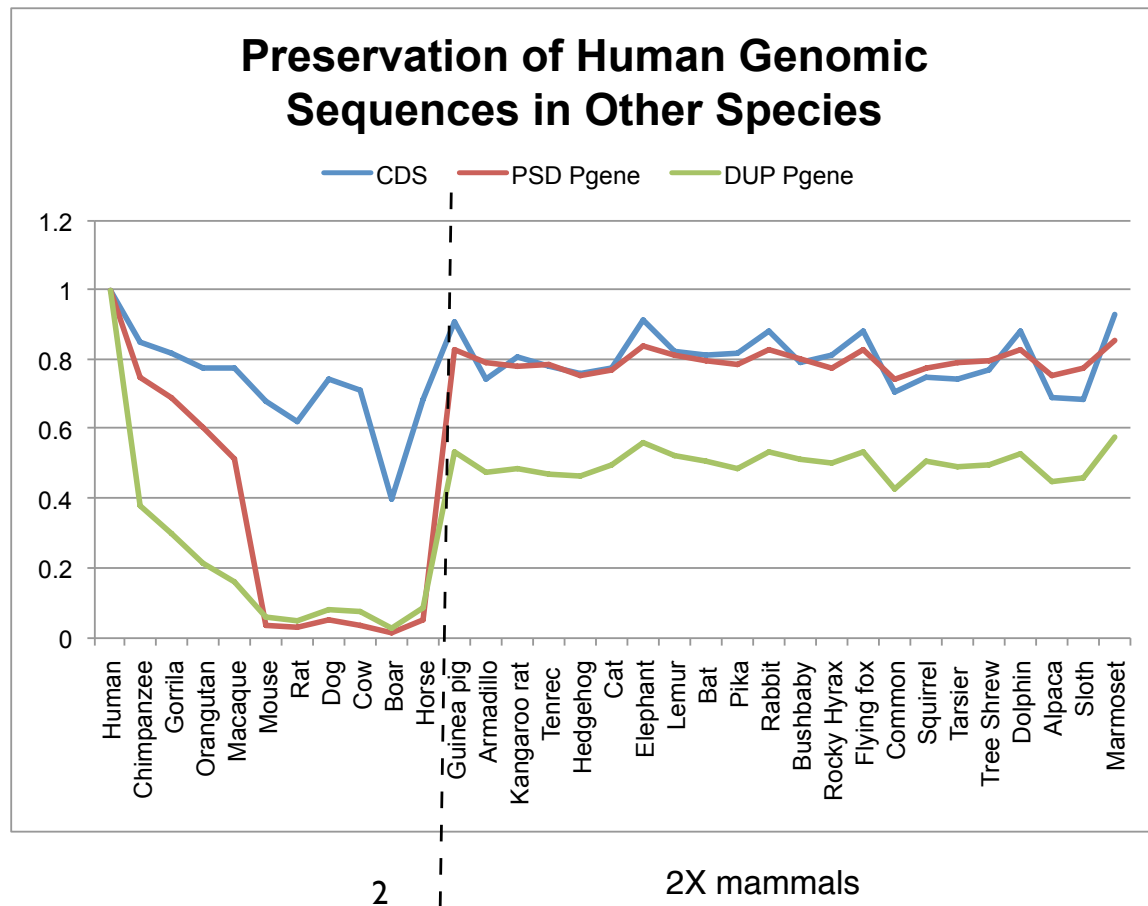
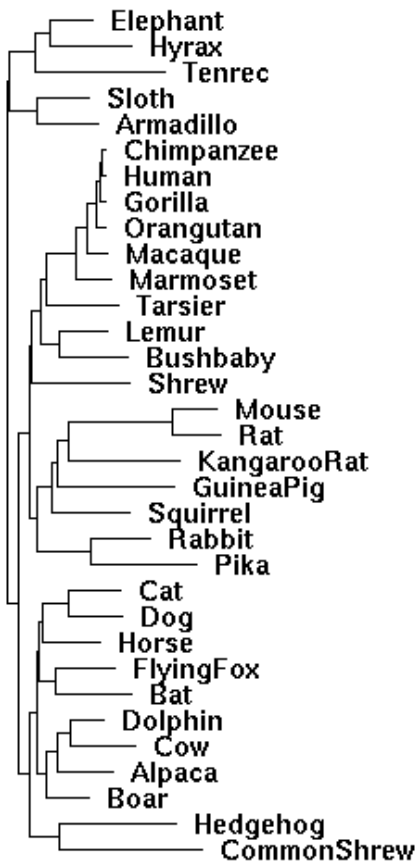
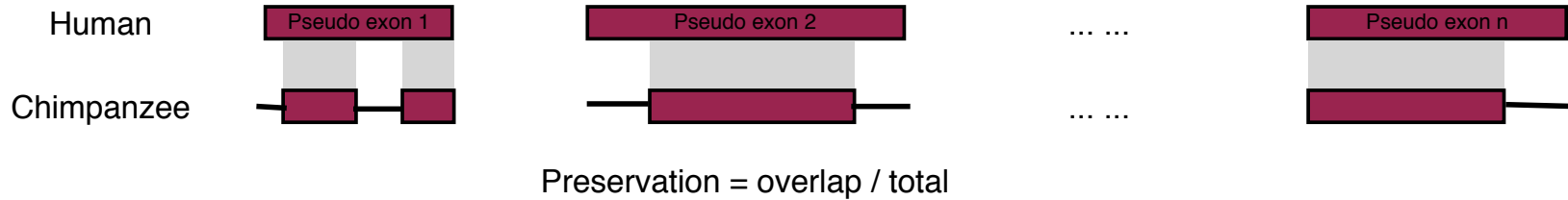


Effects of 2X Mammal Sequences on Constraint Elements in Pseudogenes

Annotation Meeting
Baikang Pei
06/22/2011

Multiple Sequence Alignments



Other Preservation Criterion -- 50 nt

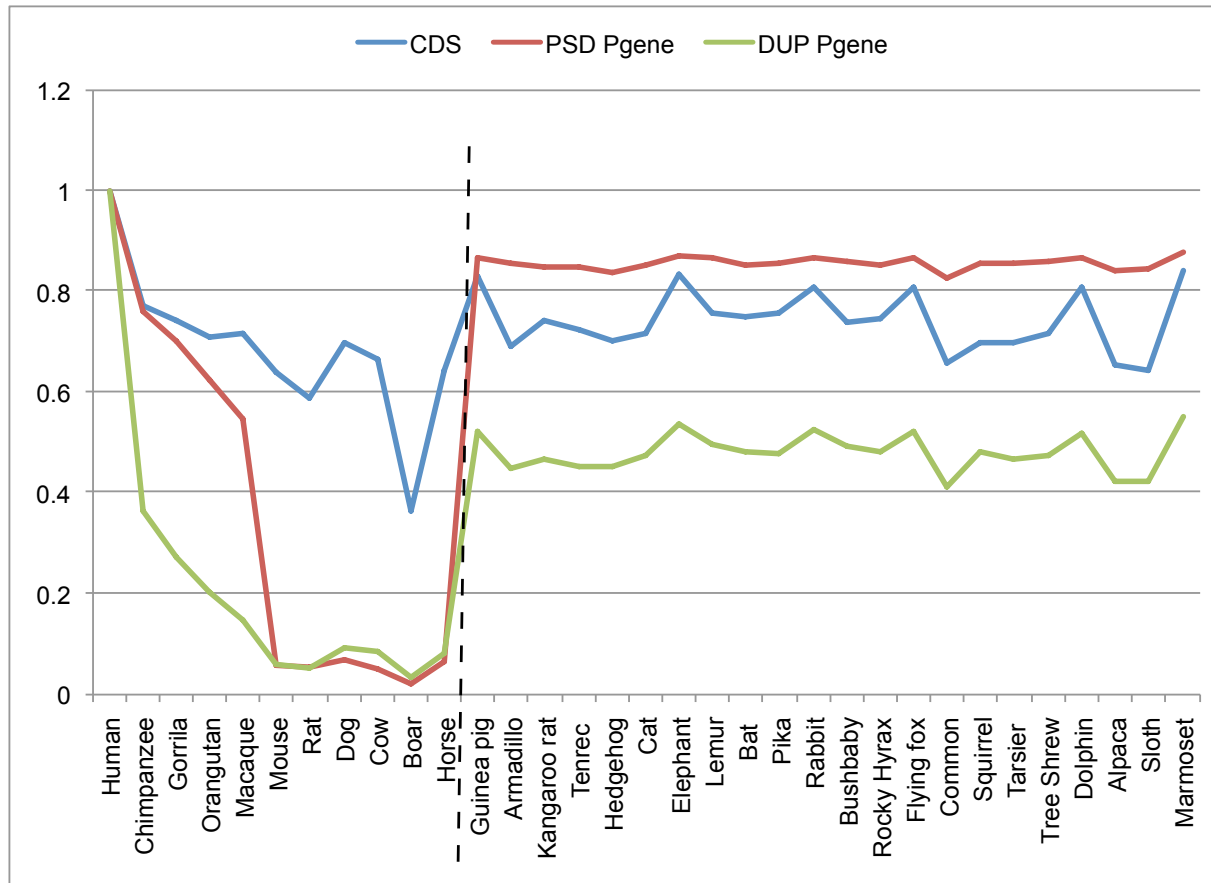
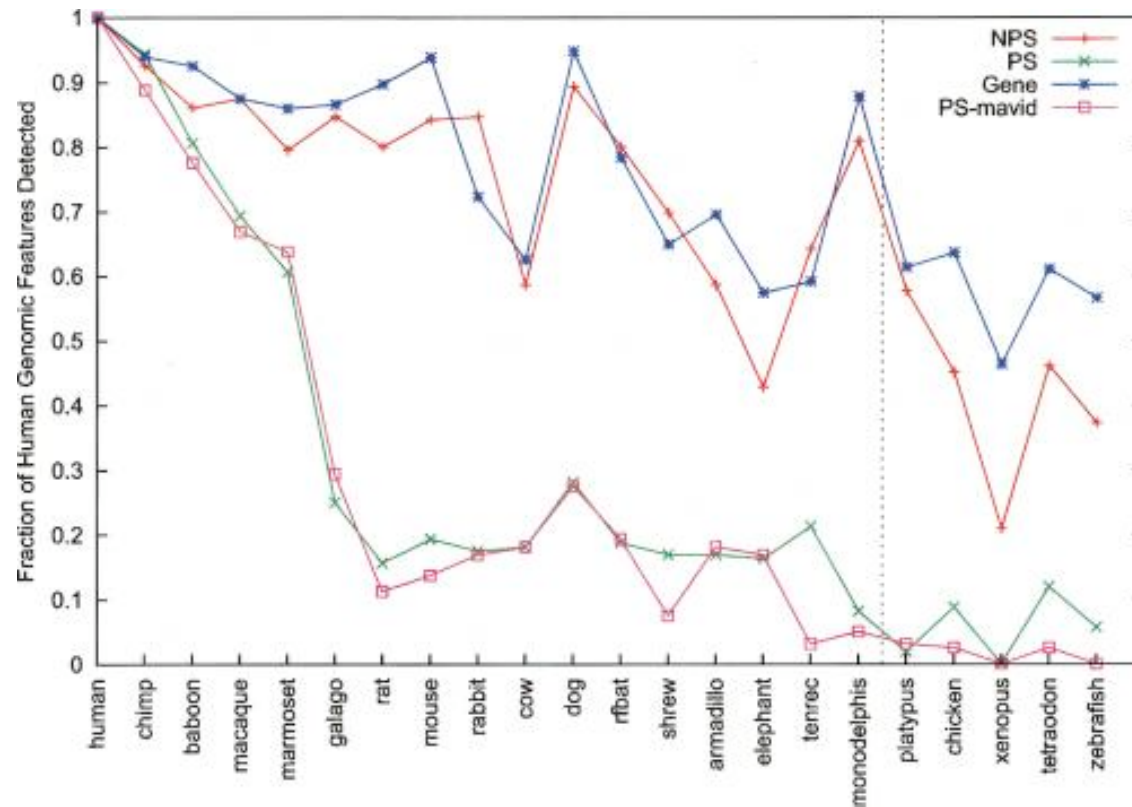
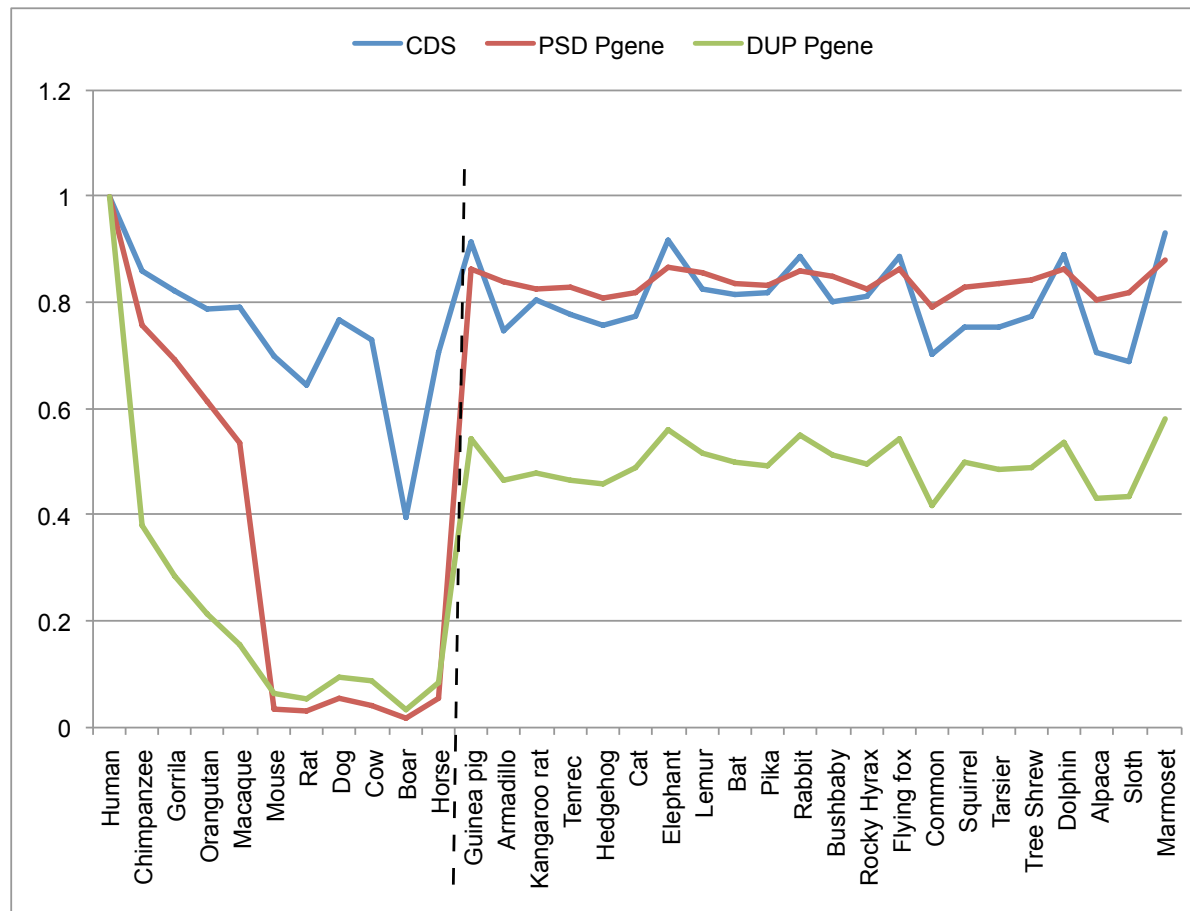


Figure in Pilot Companion Paper

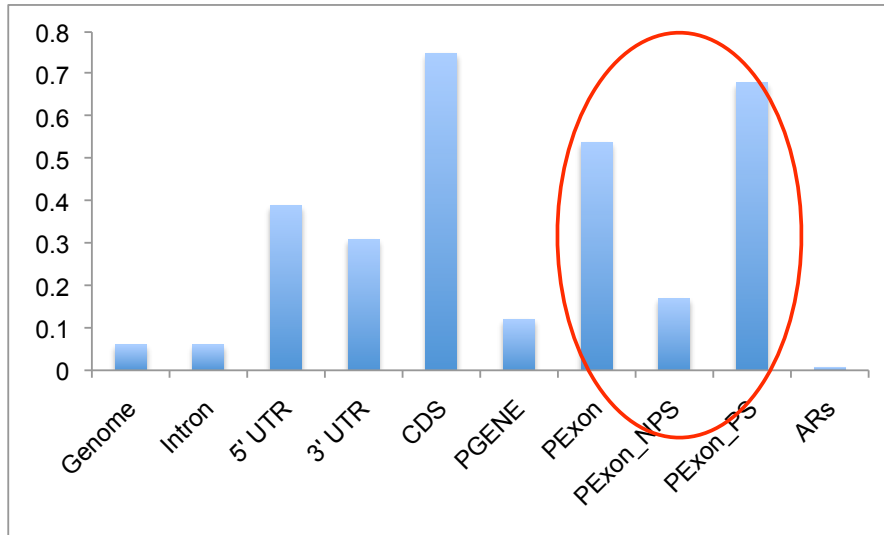


Other Preservation Criterion -- 50%



Constraint Regions from Different Alignments

EPO, 33 species (from ENCODE)



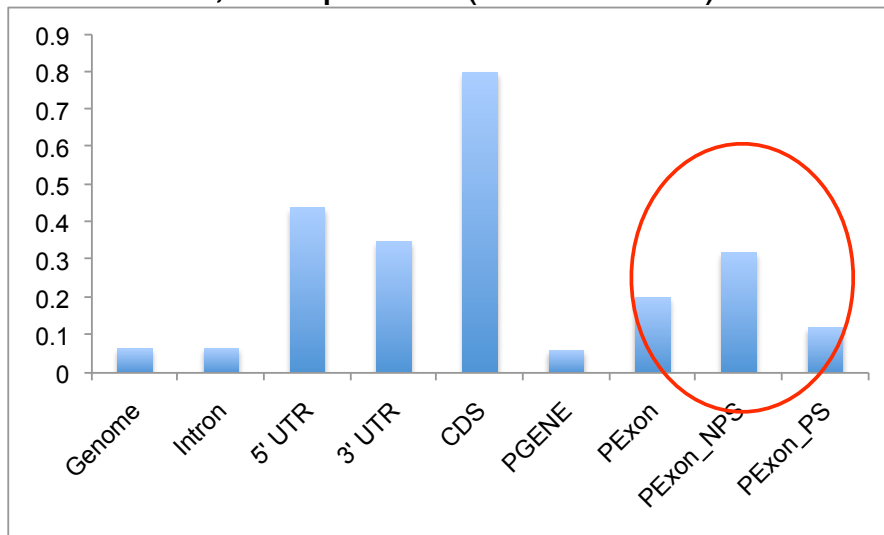
Difference of Species included in Alignment

	ENCODE	UCSC
Boar	x	-
Baboon	-	x
Wallaby	-	x
Opossum	-	x
Platypus	-	x

Difference of 2X mammals included in Alignment

	ENCODE	UCSC
Guinea Pig	x	-
Wallaby	-	x
Opossum	-	x
Platypus	-	x
Gorilla	-	x

TBA, 36 species (from UCSC)



There is a filter step in the TBA alignment: those for 2X mammalian genomes were filtered to retain only alignments of best quality in both the target and query ("reciprocal best")

Distribution of Constraint Elements in Pexons

