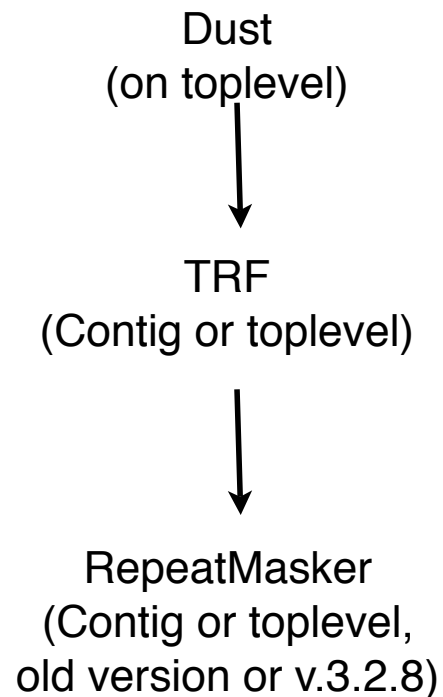


Repeat Mask of Human Genome



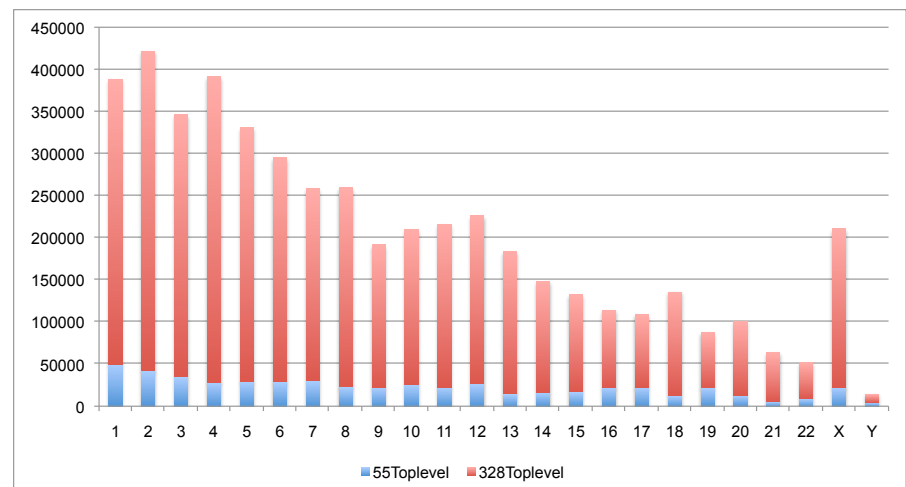
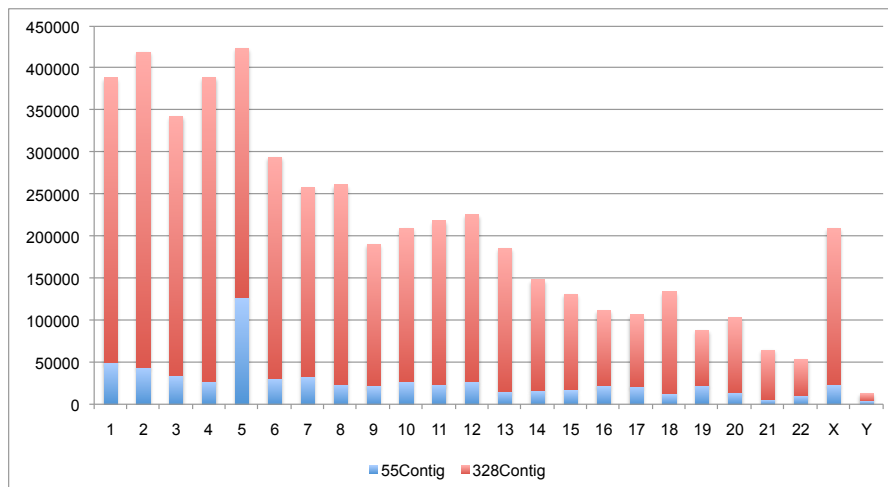
	Contig	Toplevel
older version of RepeatMasker	55Contig (same as release 55)	55Toplevel (same as release 59)
RepeatMasker 3.2.8	328Contig	328Toplevel

Effects of Different RepeatMaskers

Examine the effects of different repeatmaskers on repeat annotation when it is done on contig or top level

Both at contig level

Both at toplevel

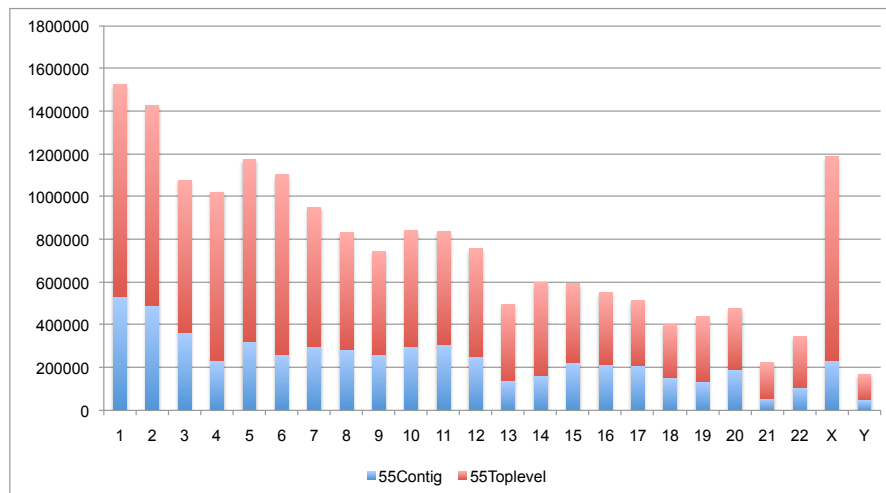


About 0.27% repeat annotations are different comparing newer and older version of repeatmasker

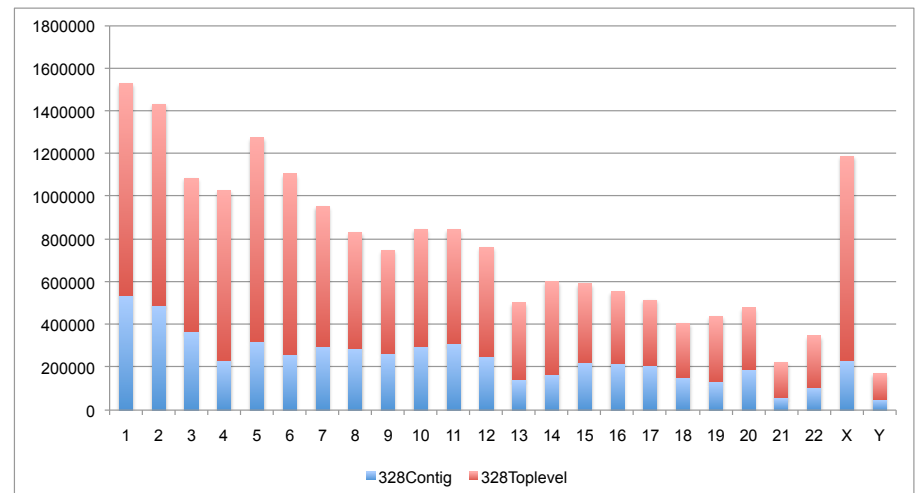
Effects of Contig vs. Top Level

Examine the effects of contig and toplevel on repeat annotation given the same repeatmasker

Both using old version of RepeatMasker



Both using RepeatMasker v3.2.8



About 1% repeat annotations are different comparing contig and top level

Take Home

Switching from contig to toplevel leads to more difference in repeat annotation than that from different versions of repeatmasker.

However, comparing to all the repeat annotations, the difference from contig vs. toplevel and from different repeatmaskers are marginal.